

LOTUS GREENS

LOTUS GREENS DEVELOPERS PVT. LTD.

Lotus Business Park, Level 7
Tower B, Plot No. 8, Sector - 127,
Noida Expressway, Noida - 201304

+91 - 95555 - 10000
+91 - 120 - 4847700
info@lotusgreens.in

www.lotusgreens.in

Site Address:

Plot No. TS - 1, Sector 22A, Yamuna Expressway
Gautam Budh Nagar, UP.

Disclaimer

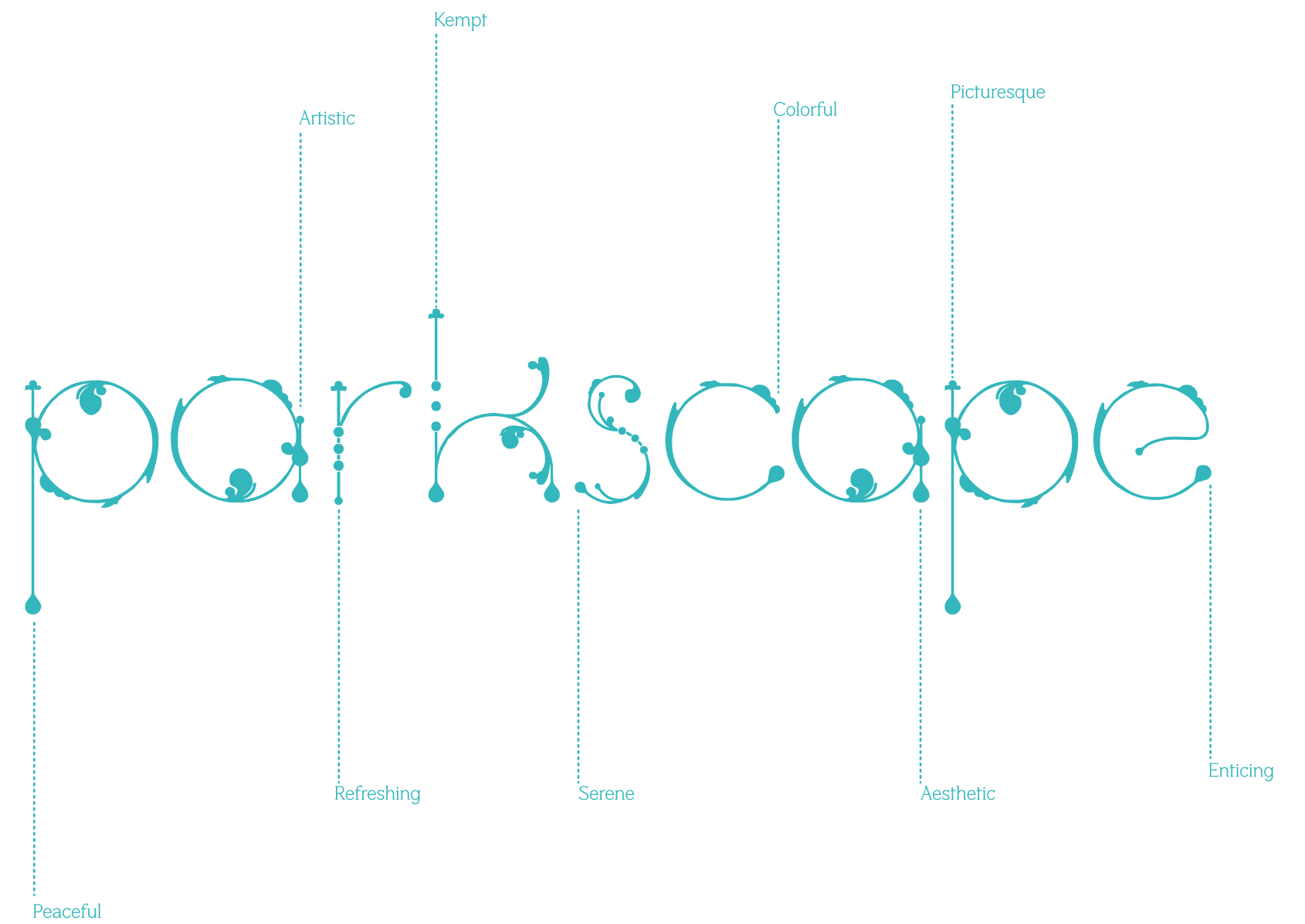
Layouts/information/areas contained or mentioned herein are indicative and subject to change as maybe required by the authorities/developer and cannot form part of any offer or contract.
1 Sq. Mtr. = 10.764 Sq. Ft. 1 Hectare = 2.47 Acre

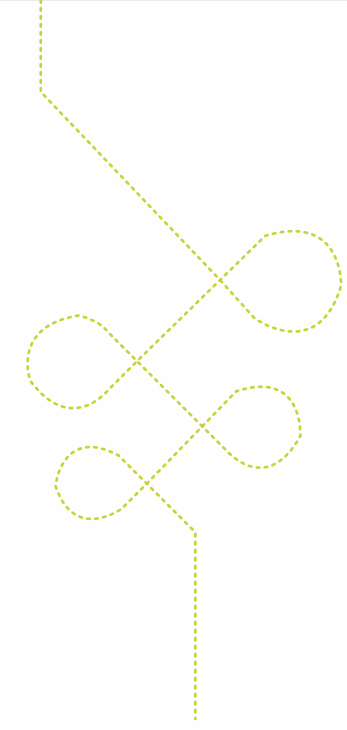


LOTUS PARKSCAPE



An exquisite composition of elements

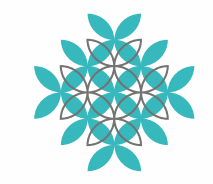




Discover a place through your senses.
Breathe in its enticing scents.
Waken to

naturae's

rhythm and absorb its melodies
Come to live. Come to life.



LOTUS PARKSCAPE



welcome

to Lotus Parkscape

Spread over 50 acres of verdant greens in sector 22A – Yamuna Expressway, Lotus Parkscape is a residential development where tranquility and modernity finds harmony in a picturesque setting.

The residences here offer the luxury of park living with refreshing panoramic views of the 10-acre central park. The breathtaking landscape and exquisite architecture will create the ambience of a truly international gated community, where everyday will start with a fresh page. Colors, textures, tastes, scents, sounds will be heightened by the crisp open air that will connect you with nature, nurturing the rare and real moments of life.

Living options of 2-3 Bedroom residences ranging from 1030 sq.ft to 2330 sq. ft are intuitively planned spaces that take your breath away.




Stay away from the crowd yet stay connected

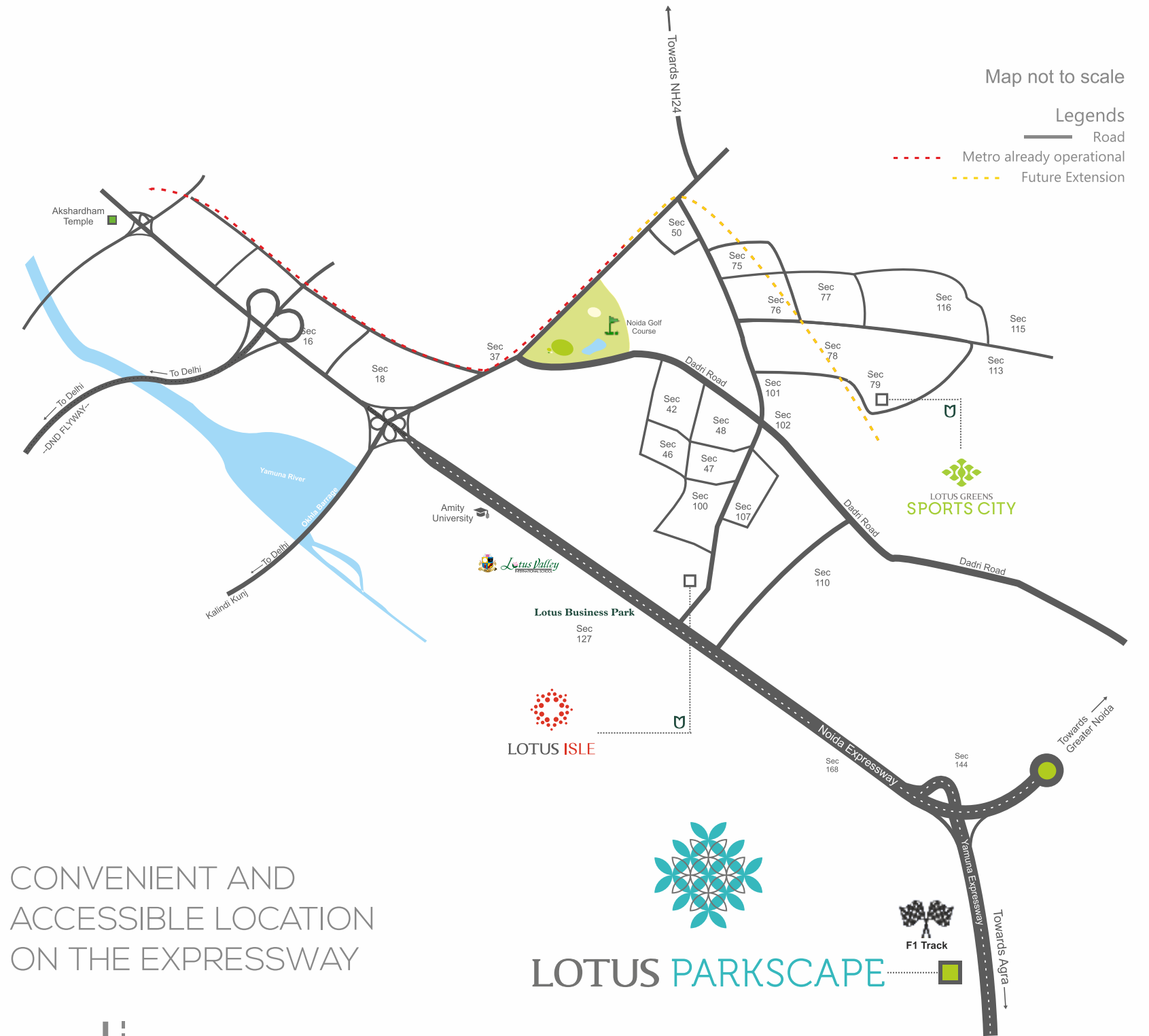
Location as exclusive as the address

Living at Lotus Parkscape offers the delights of an uber stylish residential ambience along with buzzing F1 racing track. Enjoy the serenity of lush green spaces while being in close proximity to Delhi, Noida and Greater Noida.

CONVENIENT AND
ACCESSIBLE LOCATION
ON THE EXPRESSWAY


25 minutes from Sector 18, Noida
20 minutes from Mahamaya Flyover


25 minutes from
Botanical Garden
Metro Station




LOTUS PARKSCAPE



F1 Track

The Landscape

at Lotus Parkscape

Lotus Parkscape derives its name from the expansive landscape that is designed to ensure a total escape from the city. Upon arrival one experiences a sense of being welcomed to a completely different world. Starting from the exterior, ample lush green spaces define the streetscape. Going inward, the landscape features Central Park and other sculptural splendors. Both architecture and landscape work seamlessly together to create a sanctuary for the senses.





threemoo

Gardens



GROVE GARDEN
Lotus Parkscape will have groves of flowering and scented trees such as bauhinias, chorisias, kadambas for a calm and serene sit out.



ROSE GARDEN
A fragrant rosarium for a perfect gathering of friends & family among large varieties and color of roses.

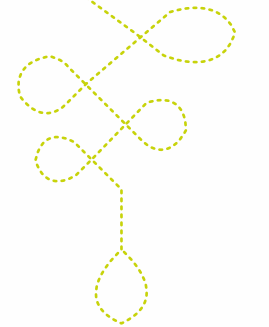


TEXTURE GARDEN
Designed to simulate not just the visual sensibilities but also the tactical senses. These relaxation spots will soothe away the daily stress.



CLUSTER GARDEN
Surrounded by residential towers, these strategically designed gardens provide play areas and perfect sit-outs to leave the hustle bustle behind.

Expansive Central Park
10 acres of green haven with every corner designed to enrich life



The
residences

that encourage you to live
more outdoor than indoors

Spectacular views as residences open to Central Greens



Premium

interiors

Contemporary enhanced spaces at Lotus Parkscap
residences feature premium touches you deserve.

At home in Lotus Parkscap, enjoy a full range of fine details and special touches. The beauty of these residences lies in their use of space. With efficient design layout there is an optimum space utilization to let your eyes and feet wander through it freely. Gracious living spaces, extraordinary kitchen, stylish bathrooms, these residences are more than just a place to live... they are a way to live.



Homes in harmony with patterns of nature



Rain Water Harvesting

The latest in Rainwater Harvesting technology, water conserving fixtures & fittings, along with native & low water consuming plants, let's you save every drop of water you can.

Solid Waste Management

Take pride in being a responsible citizen and enjoy healthy living with '0% Discharge Building', innovative Solid Waste Management, Waste Segregation System and Eco-Friendly Infrastructure & Facilities.

Themed Aroma Garden

With wide open spaces, all balconies and windows have been specifically designed to present rejuvenating views from all directions.

Heat Reduction

Climate responsive design where care has been taken to locate every home so as to minimise heat ingress

Solar Energy

Effective use of solar lighting and solar heaters to reduce running cost and embrace more efficient living.

Sensor Lights

Automated lighting system to reduce energy wastage, there by reducing maintenance charges.

Healthy Indoor Environment

Use of natural, non toxic materials such as low VOC paints and finishes for a better indoor environment. Good views of the exterior and overall better indoor environment ensures health and well being for all residents.

Cross Ventilation

Welcome a healthy environment in your house with adequate provision for cross ventilation.

Abundant Sunlight

Excellent natural lighting thereby reducing the use of artificial lighting during the day time and also providing better indoor environment for residents

Grand Entrance lobby | High speed elevators | Residences facing central greens | Fire detection & alarm system | Captive Power back-up | Large windows for natural lighting | Modern style bathroom fixtures | Dedicated parking area | 24x7 security with manned boom barriers

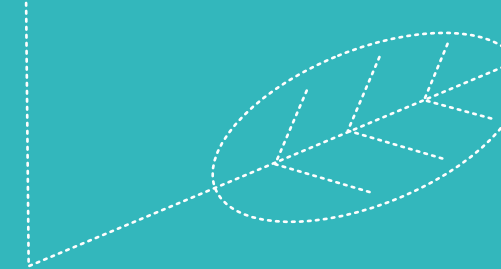




lifestyle

All the time in the world for
savoring the full flavors of life

Enjoy a luxury retreat with abundance of recreational activities and conveniences.





INDOOR FACILITIES

- Table Tennis
- Billiards / Snooker
- Gymnasium
- Yoga / Meditation Room
- Aerobics Room

OUTDOOR FACILITIES

- Tennis Court
- Kids Play Area
- Basket Ball Court
- Jogging Track
- Badminton Court
- Swimming Pool

OTHER FACILITIES

- Pool Side Café
- Restaurant
- Party Room
- Card Room
- Library
- Gazebo / Pergolas



Specifications



LIVING & DINING

Flooring	Vitrified Tiles
Wall	Oil Bound Distemper
Ceiling	Oil Bound Distemper
Door	Enamel painted flush doors
Windows	UPVC / Aluminium glazing



MASTER BEDROOMS

Flooring	Vitrified Tiles
Wall	Oil Bound Distemper
Ceiling	Oil Bound Distemper
Door	Painted Doors
Windows	UPVC / Aluminium glazing



BEDROOMS

Flooring	Vitrified Tiles
Wall	Oil Bound Distemper
Ceiling	Oil Bound Distemper
Door	Painted Doors
Windows	UPVC / Aluminium glazing



KITCHEN

Flooring	Vitrified Tiles
Wall	Oil Bound Distemper with 2' high tile dado in front of counter
Counter	Stone Counter with SS Sink
Ceiling	Oil Bound Distemper
Windows	UPVC / Aluminium glazing



BATHROOMS

Flooring	Antiskid Ceramic Tiles
Wall	Ceramic Tiles upto 7'0" height
Fittings & Fixtures	Branded bathroom fixtures
Ceiling	Moisture Resistant False Ceiling
Door	Painted/ PVC Shutter Doors



BALCONY

Flooring	Matt Finish Ceramic Tiles
Wall	External Weatherproof Paint
Ceiling	Oil Bound Distemper
Railing	MS Railing



Welcome to Lotus Greens

Lotus Greens endeavours to touch lives and create a brighter tomorrow. To realize this ideal, we aim to awaken the potential in everyone, at work, at leisure and at home. We believe that beauty and purity, such as of the Lotus flower, can change lives for the better. It helps us to inspire the Difference. Through relentless dedication to impeccable quality standards and raising the bar even higher, we strive to create and maintain the Difference. In effect, we're building a legacy that will stand the test of time.

Incepted in February 2013, Lotus Greens is a diversified real estate group led by eminent luminaries in the business. We today have significant business interests across Residential, Commercial, Hospitality, Education and Healthcare domains. The leadership team is driven by the ideals, experience and expertise of Founder Mr. Nirmal Singh, and prides itself on having already delivered 14 million sq. ft. of real estate spaces, with a current land bank of 925 acres.

Abundant green landscapes and adherence to green building norms are sacrosanct for all our projects. Our focus is on developing a sustainable future that is committed to the environment. We're actively working on developing sustainable communities by enabling homes for about 12000 families in the next 3 years.

Harbouring a dream to nurture the future of India, Lotus Greens has established the acclaimed Lotus Valley International Schools at Noida and Gurgaon, in partnership with the international Ivy League Brown University - Department of Education. Our intent is to give wing to our dream by establishing 2 more schools in the next 3 years.

Lotus Greens is developing over 1 million sq. ft. of Hospitality space through strategic tie-ups with renowned hotel chains like Four Seasons, Fairfield and Marriott.

We are also developing a Medical Foundation that encompasses training, teaching, treating, research and clinical practices in an environment of excellence.

With clarity of thought that inspires communities and individuals, we are a trusted partner for life, helping everyone embrace the Difference.

We are LOTUS GREENS, and we welcome you to experience a world where all can Live the Difference.





Aerial view of Lotus Parkscape

