



*A new high in
luxury living*



LUXURY SERVICED APARTMENTS

An Exclusive Lifestyle Just for you...

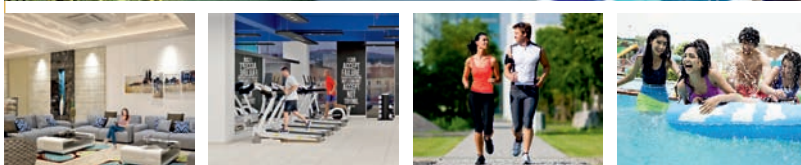
Presenting the Luxurious Serviced Apartments with Privileges of a Club that are beyond the ordinary...

The VVIP Suites Luxury Serviced Apartments, Rajnagar Extn. are a perfect union of the past with the present. Sensitive restoration seamlessly blends with imaginative contemporary design to ensure the building retains its unique character. In order to make this experience memorable we have dedicated ourselves to designing modern and comfortable Serviced Apartments in Rajnagar Extn. with a historic and educative touch. Whether you are looking for an overnight stay, short break, or annual family holiday, The VVIP Suites will enable you to recharge your batteries, and nourish your body and soul. Offering period character with a contemporary twist, each of the apartments are individually designed and furnished. Different apartment sizes offer you different comfort levels. All our Suites are fully equipped and ready to meet your every expectation...



Top-Notch Facilities

- ✦ Located on the Best Location of Rajnagar Extension
- ✦ Gated Condominium ensuring round the clock manned security with CCTV monitoring'
- ✦ Largest Class Club House in Ghaziabad Spread Over 2,000 sq. yard with Swimming Pool, Gymnasium, Party Hall, Mini-theatre & Conference Hall.
- ✦ Eco Friendly Design
- ✦ Jogging track inside the campus
- ✦ Convenient Shopping Centre
- ✦ Adequate Water supply
- ✦ Vastu based, well-planned gated colony
- ✦ Superior Quality Construction
- ✦ Piano Theme Musical Fountains
- ✦ Over 2 Acres Garden Area & Kid's Zone
- ✦ Cricket Stadium with Day-Night Facility
- ✦ FTTH-Fiber Optical Cable laid down in the premises for house automation
- ✦ 100 Acres City Forest Operational & Proposed Metro Station Nearby
- ✦ Finest Academic/professional institutes in close proximity



Floor Plans

TYPE 1

Total Area : 732 Sq.ft.
 Carpet Area : 403.65 Sq.ft.
 Balcony Area : 57 Sq.ft.



TYPE 2

Total Area : 1230 Sq.ft.
 Carpet Area : 606 Sq.ft.
 Balcony Area : 215 Sq.ft.

1 sq. mtrs = 10.764 sq.ft. & 1 sq. mtrs = 1.195 sq.yard



LUXURY SERVICED APARTMENTS

TYPE 3

Total Area : 665.80 Sq.ft.
Carpet Area : 301.39 Sq.ft.
Balcony Area : 103.24 Sq.ft.



TYPE 4

Total Area : 627.6 Sq.ft.
Carpet Area : 317.54 Sq.ft.
Balcony Area : 75.35 Sq.ft.

High Class Specifications

- DOOR FRAME** : Wooden Door Frame.
- EXTERNAL DOOR** : Power Coated Aluminum Sliding Doors.
- DOOR SHUTTERS** : Factory made skinned doors.
- WINDOW FRAME SHUTTERS** : Powder Coated Aluminum Section with Glass.
- FLOORING** : Overall 800mm x 800mm vetrified Tiles.

ENTRY



TYPE 5

Total Area : 1232.5 Sq.ft.

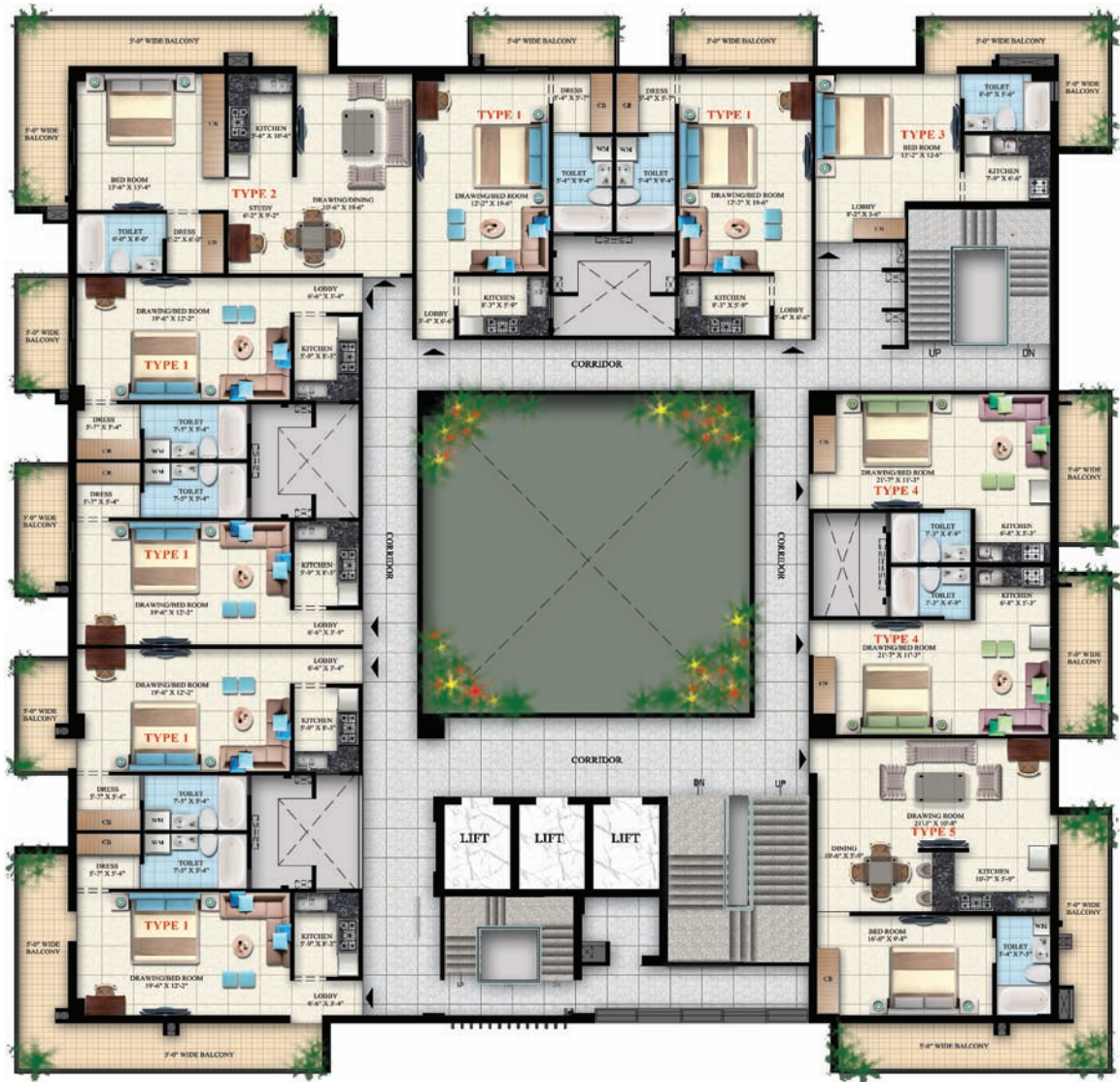
Carpet Area : 583.41 Sq.ft.

Balcony Area : 231.43 Sq.ft.

TOILET/BATHROOM : Designer glazed tiles upto 7 ft. ht. with matching ceramic ware, Toiletries, Bathing Cubial & C.P. Fittings, Steelgray Granite Stone Flooring.

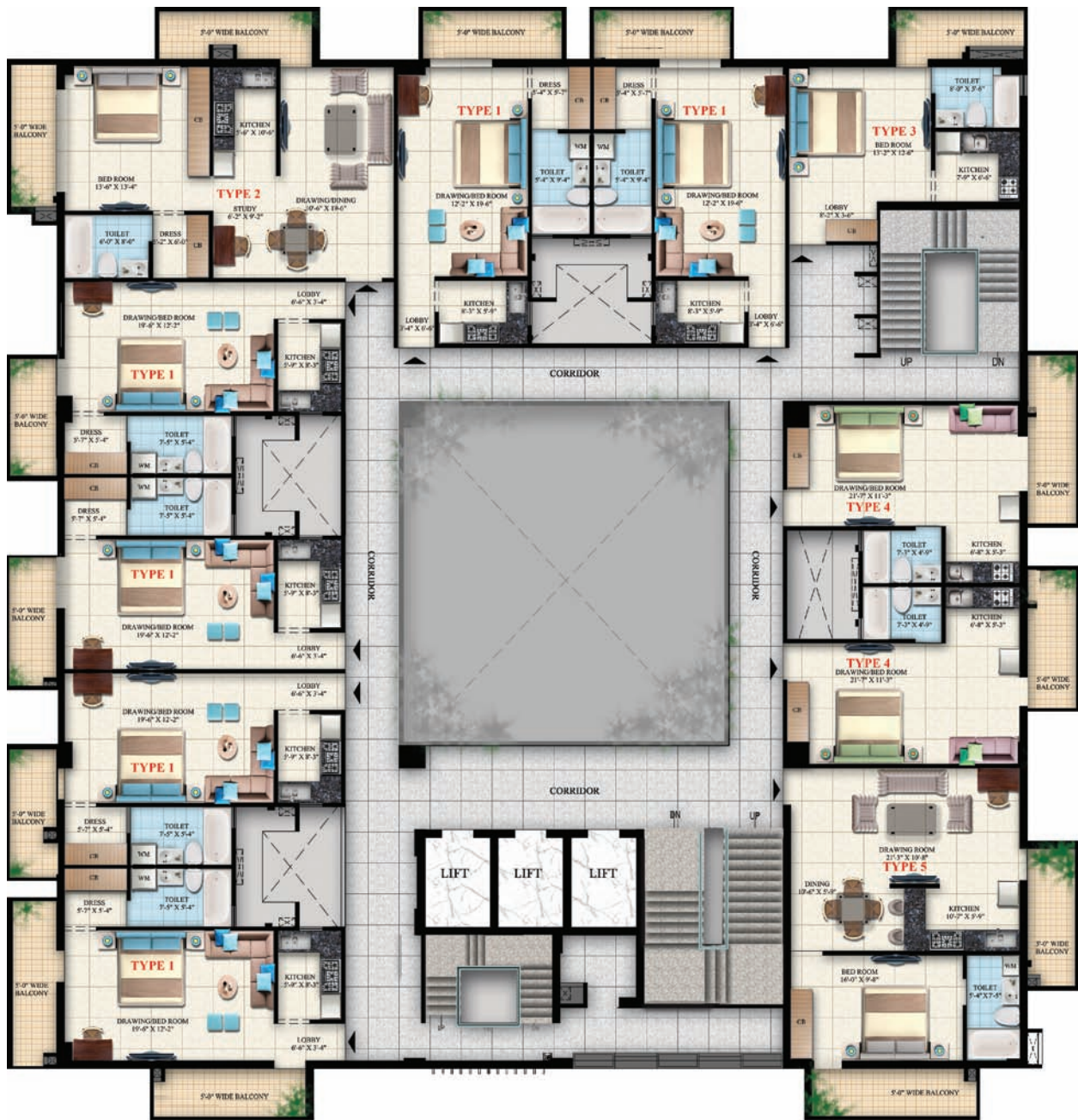
KITCHEN : Modular Kitchen with Granite Platform, Steel Sink, Glazed tiles in Dado upto 2' from platform, Chimeny, Stove, Microwave, Fridge, & RO.

PAINTING : Internal wall painting, Punning & Plastic Paint & Designer false ceiling with down lights in drawing/dinning.



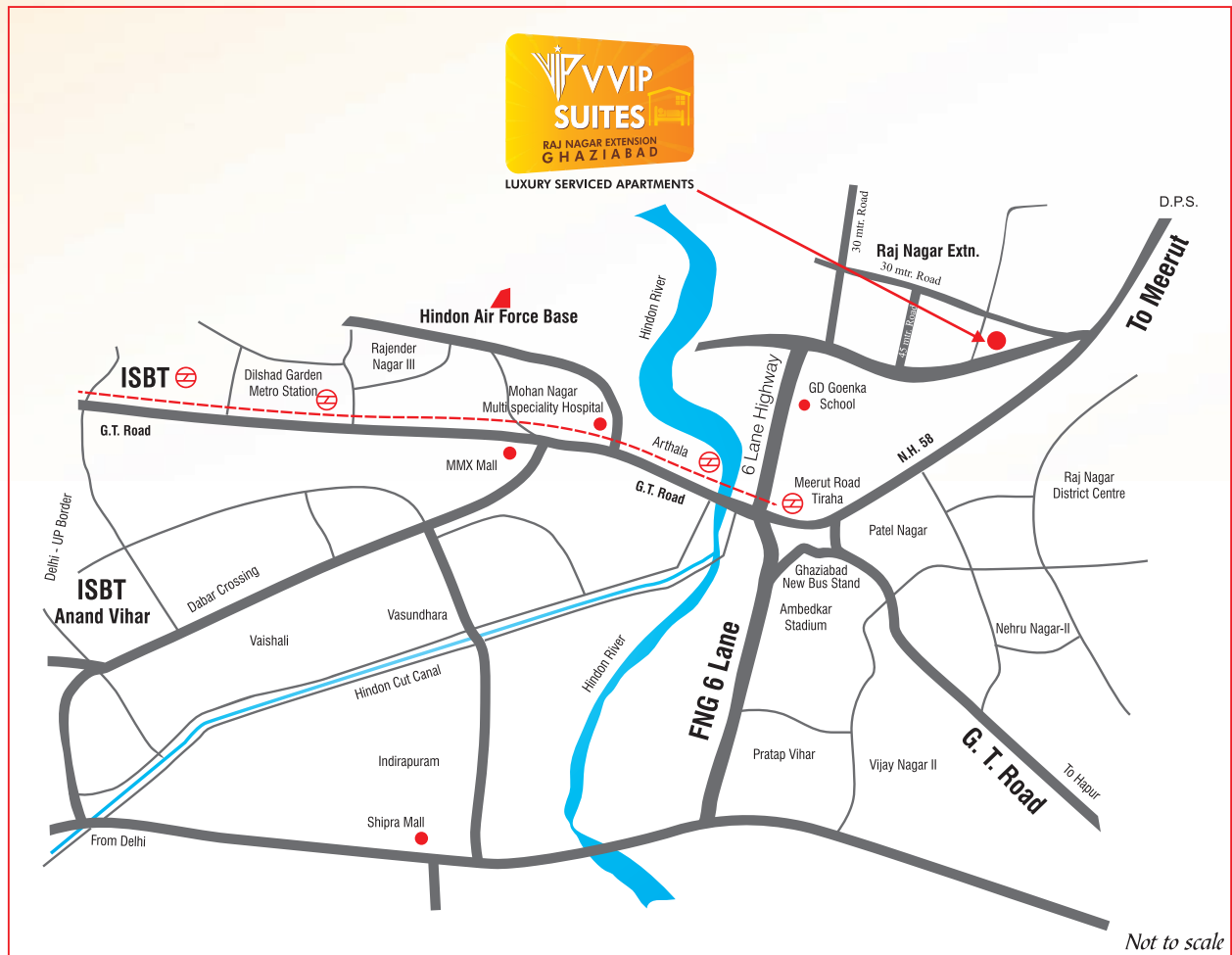
Cluster Plan 4th & 6th Floor

- | | | |
|--------------------|---|--|
| FURNITURE | : | Bed with Mattress, Sofa with Center Table, Dining Table, Cupboards & LED Console. |
| ELECTRICALS | : | LED, AC, Geysers, Designer Light Fixtures at entrance gate and basic lighting in common areas. |
| OTHERS | : | Godrej Locker, Sensors, Curtains and Art effects. |
| SECURITY | : | Exclusive Guard at main entrance lobby. |



Cluster Plan
5th & 7th Floor

Location Map



VIBHOR VAIBHAV INFRAHOME PVT. LTD.

Corporate Office : VVIP Style, Raj Nagar Extension, NH-58, Ghaziabad
 Call : 8826 53 303, Website : www.wipspaces.com, SMS VVIP to 53030

Disclaimer: This brochure is entirely conceptual & not a legal document of offer all floor plans, specification, elevations/s and features are indicative in nature and are subject to revision at the sole discretion of the Company/Architect or any other competent authority.