



**LOCATION LEGENDS**

- THANE - BELAPUR ROAD**
- GHANSOLI RAILWAY STATION**
- GHANSOLI BUS DEPOT**
- RELIANCE CORPORATE IT PARK**
- SCHOOLS**
- D-MART**
- HOSPITALS**
- BANKS**
- NMMC CENTRAL PARK**



**8080205040 / 9930202121**  
**9820247383**

Site & Office Address: TITANIUM INFRACON  
 Pyramid Icon, Shop No. 9, Plot No.9, Sector-5, Ghansoli, Navi Mumbai.  
 Email: titaniuminfracon@gmail.com

MAHA RERA NO. P51700027223 | <http://maharera.mahaonline.gov.in>

Disclaimer: The images herein are only indicative and are for sake of illustration only. All specifications of the flat, amenities, services etc. proposed to be provided are specified in agreement for sale to be entered with Purchaser subject to tolerance etc. as provided therein. NOC/Permission will be obtained for Sale of Property, if required. You are required to verify all the details, including area, amenities, services, terms of sale and payments and other relevant terms independently with the Developer sales team only, by physically visiting the project site and the authorised website of RERA. You are requested not to visit any unauthorised website / broker (online / offline) to receive any information about any projects of the Developer and/or its sister concerns. Version 1 printed on Jan. 2018

## PROJECT FEATURES



CIDCO  
TENDER PLOT



SHOPS & 2BHK LUXURIOUS  
BUDGET FLATS



RESIDENTIAL CUM  
COMMERCIAL PROJECT



24 HRS  
WATER SUPPLY



EARTHQUAKE RESISTANT  
RCC DESIGN



AMPLE CAR PARKING  
SPACE



24 X 7 CCTV SURVEILLANCE  
& SECURITY



LOANS AVAILABLE BY MAJOR BANKS  
& FINANCIAL INSTITUTIONS

**ULTRA - LUXURIOUS 2 BHK FLATS**





Artist's impression



Artist's impressions

## AMENITIES

### FLOORING

- Vitrified flooring in all rooms

### KITCHEN

- Granite kitchen platform with Branded S.S. Sink
- Wall Tiles dado up to beam level

### DOORS

- Decorative Laminated flush doors with wooden frame
- Laminated flush internal doors
- Branded Fixture & Fittings

### BATH & WC

- Designer glazed tiles dado upto Beam Level
- Branded sanitary wares
- Concealed Plumbing with premium quality C.P. Fitting
- Geyser Connection in all Bathrooms

### WINDOWS

- Powder coated aluminium sliding windows with tinted glass

### WALLS & PAINTS

- Gypsum finished internal walls with premium quality Paint
- Acrylic paint on external walls

### ELECTRIFICATION

- Concealed copper wiring with MCB & ELCB
- AC point provision in Bedrooms
- Branded Electrical Fittings

### LIFT

- Lift of reputed ISI make
- Power Backup for Lift

### WATER

- Under Ground and Overhead water tank with adequate water storage capacity

### TERRACE

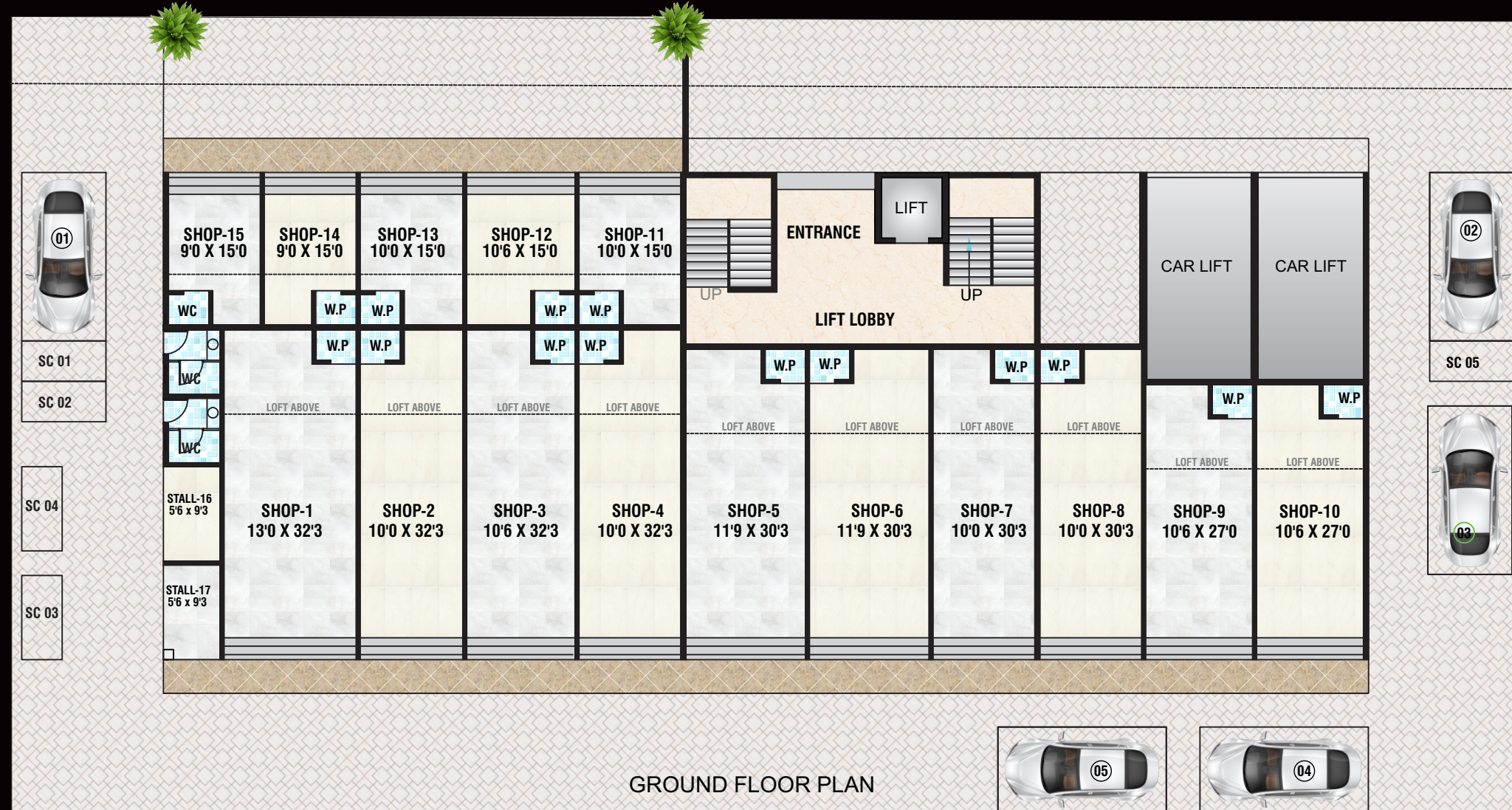
- Special Brickbat water proofing treatment with China Chips Flooring

## LOCATION FEATURES

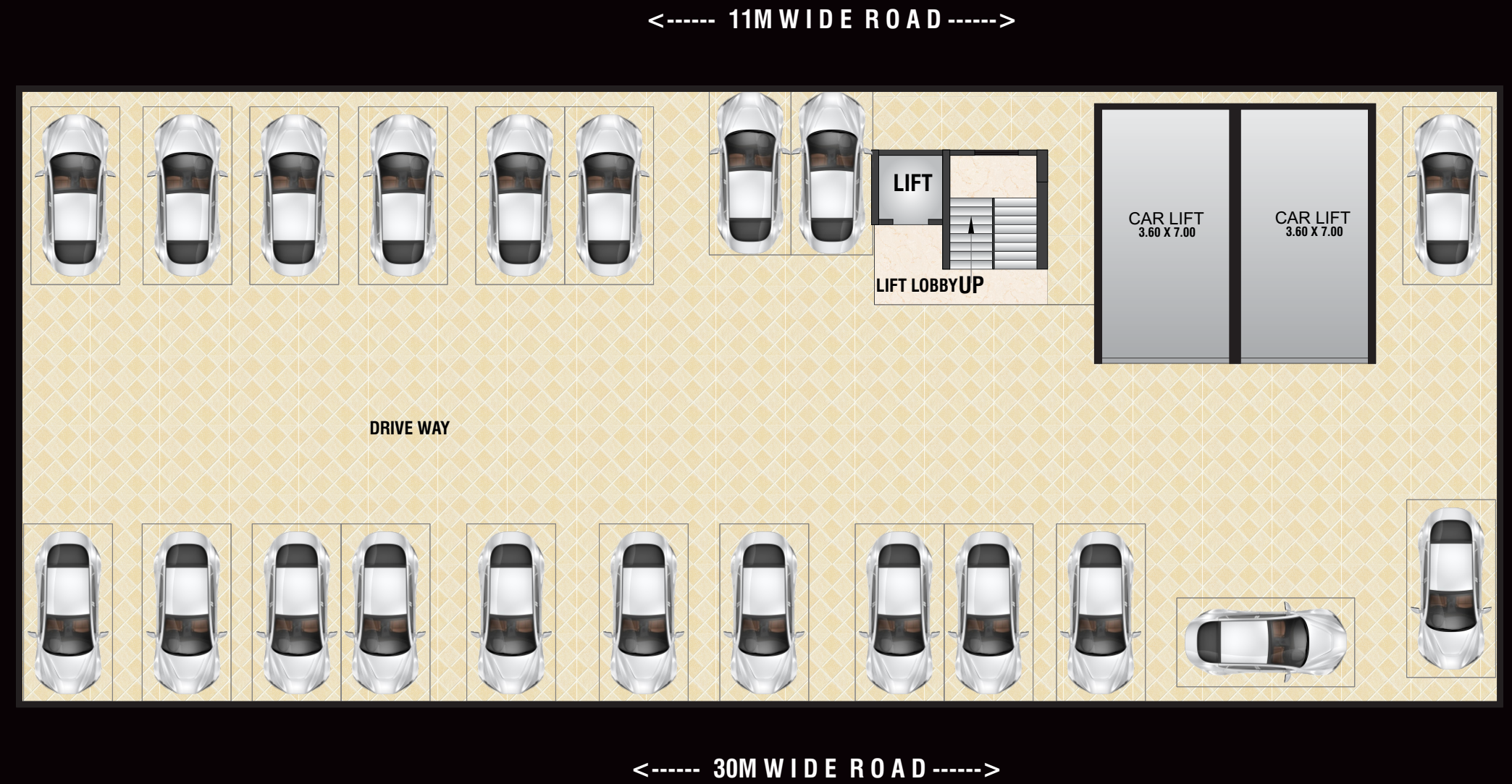
- Opposite to Ghansoli Railway Station
- Nearest to Ghansoli Central Park
- DMART & Market in vicinity
- Close to Thane-Belapur highway providing efficient road connectivity to Mumbai
- Close to proximity Banks and ATM's
- ICSE & CBSE schools & Colleges nearby.
- Top-notch Restaurants in close vicinity
- Renowned hospitals in proximity
- Malls and Shopping centres in vicinity
- A short drive away from the renowned business hub - Mahape, Navi Mumbai



GROUND FLOOR PLAN

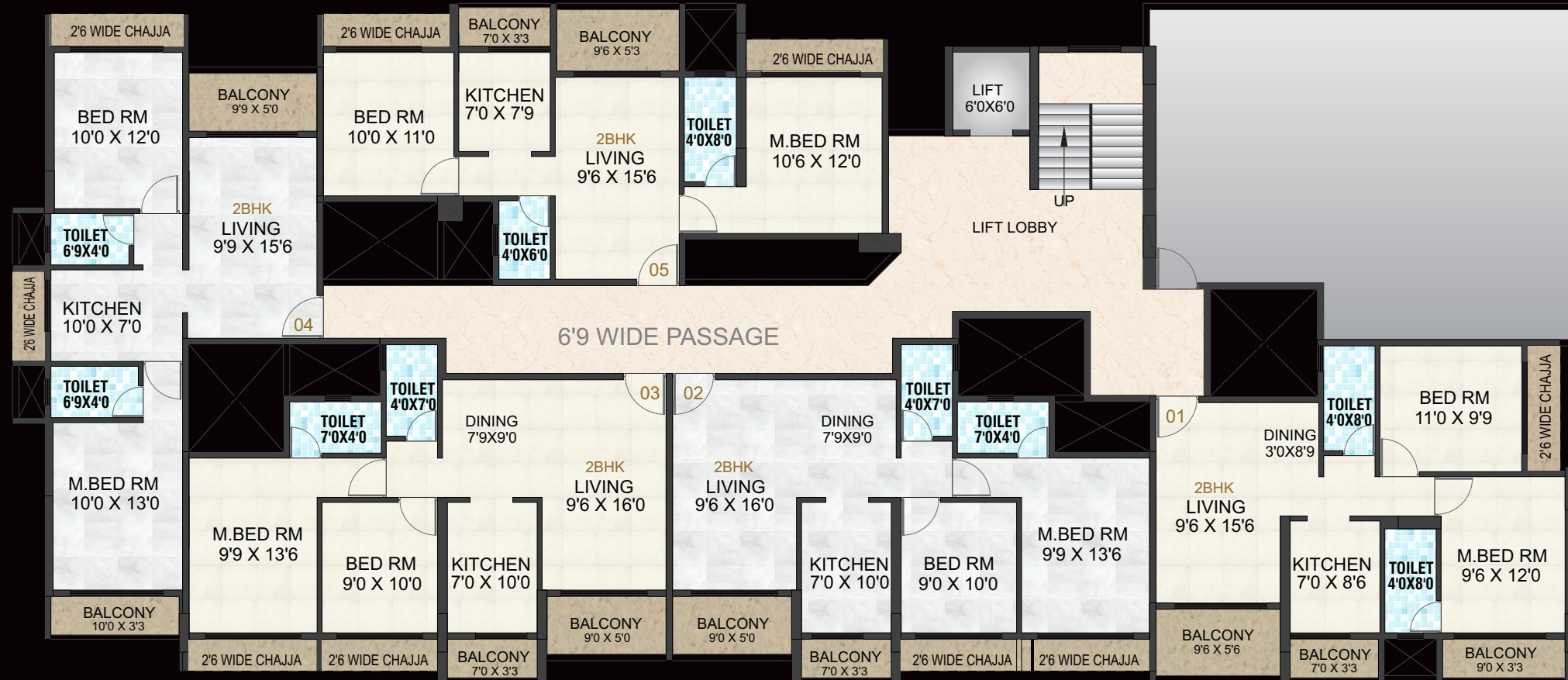


1<sup>st</sup> FLOOR PLAN



2<sup>ND</sup> FLOOR PLAN

<----- 11 Mtr WIDE ROAD ----->



<----- 30 Mtr WIDE ROAD ----->

3<sup>RD</sup> TO 7<sup>TH</sup> typical FLOOR PLAN

<----- 11 Mtr WIDE ROAD ----->



<----- 30 Mtr WIDE ROAD ----->