

5 Elements Realty presents

ADITHYA GREEN GARDENS

Premium Apartments 2 & 3 bhk

Excellent ventilation and natural light

No common walls between any two apartments

Superior specifications with Pooja Room

Individual apartment plans with privacy

Spacious bedrooms

Low maintenance cost

Vaastu Compliant



Premium Apartments 2 & 3 BHK

5 Elements Realty presents

ADITHYA GREEN GARDENS

KR PURAM

2BHK
1094 - 1366 Sq.Ft

3BHK
1288 - 1621 Sq.Ft



Presented by

Constructed by

ADITHYA DEVELOPERS

This Project is Financed by



ADITHYA GREEN GARDENS

RERA No. PRM/KA/RERA/1251/446/PR/210319/004035
No. 48, Lemon Leaf 1st main, Kodigehalli Main Road
Kodigehalli, KR Puram, Bengaluru 560092
Email: enquiry@5elementsrealty.com
Website: www.5elementsrealty.com
Mob: +91 90089 99995

This brochure is purely conceptual in nature and is by no means a legal document. The promoters, developers & architects reserve the right to add, delete or alter any specification or detail mentioned herein.



Multipurpose Hall



Well Equipped Gym



Swimming Pool



CCTV Surveillance



24 Round the Clock Security



Childrens Play Area



Covered Car Parking

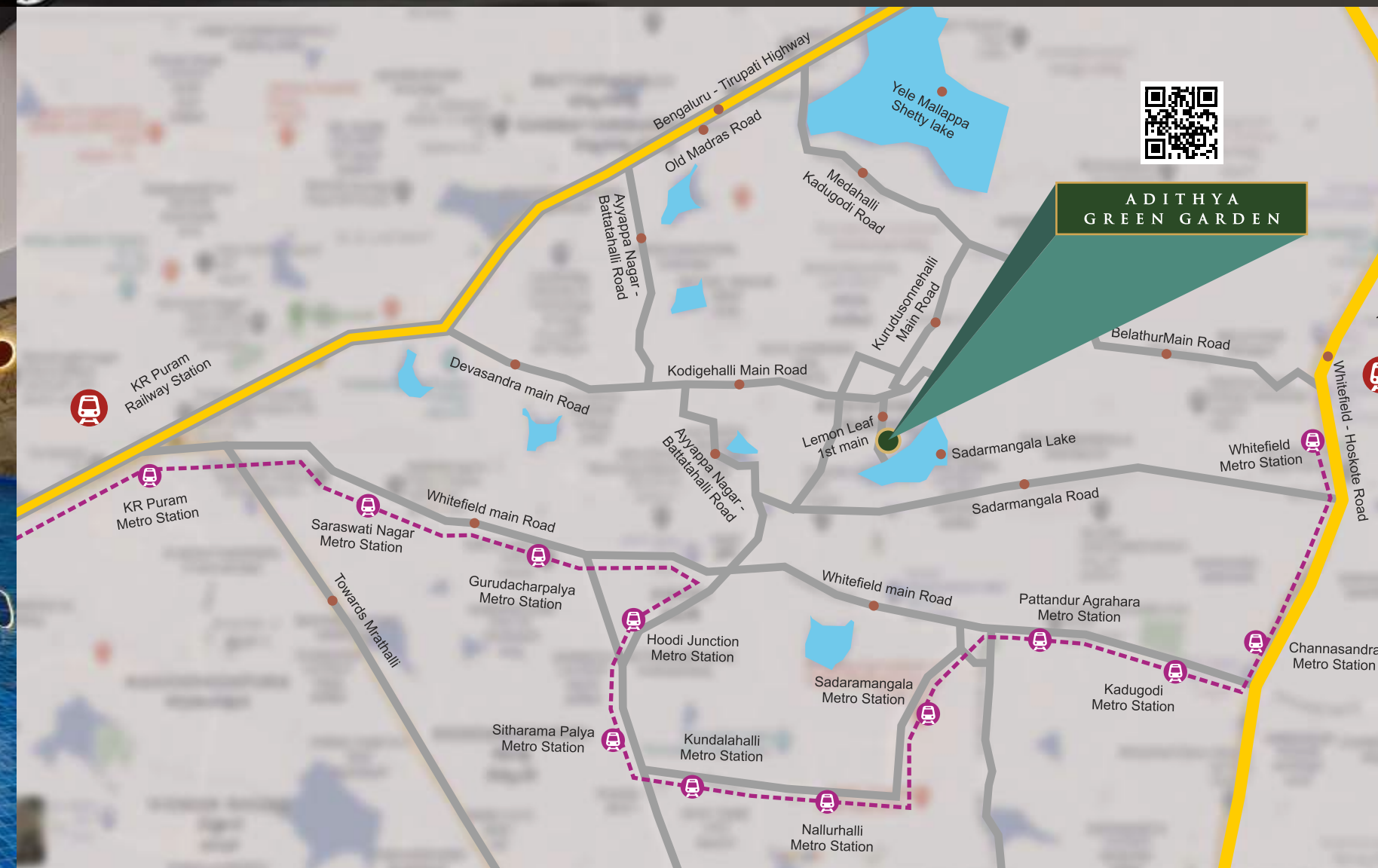
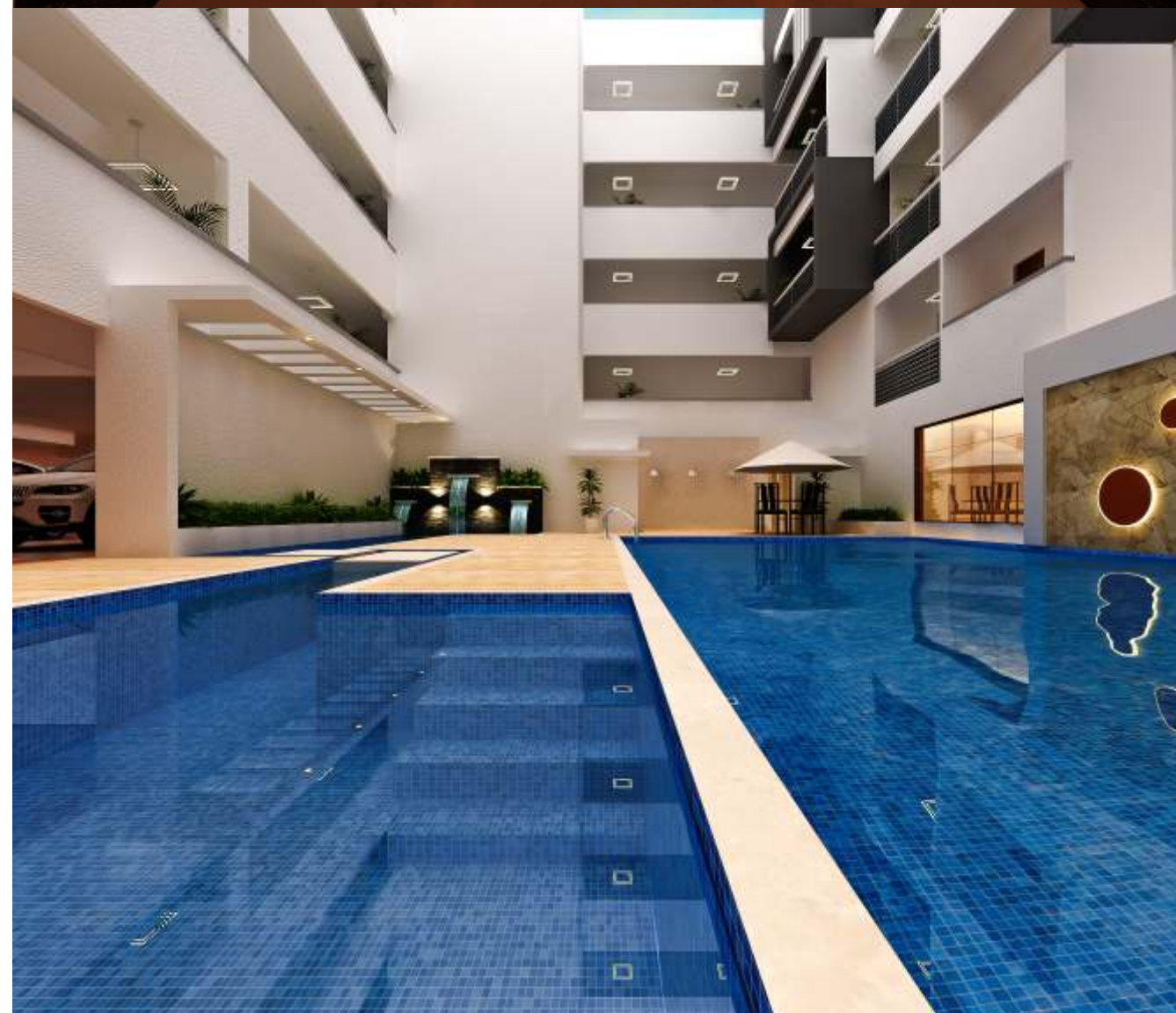


Adequate Water Supply



Landscaped Garden

*Power Backup for common area and lifts



Banks
• State Bank of India
• Axis Bank
• HDFC Bank
• Bank of Baroda

Hospitals
• Sathya Sai Othopaedic and Multi-Speciality Hospital
• Vitals Mother and Child Hospital

Schools
• Blossom International School
• SJES Central School
• SJES College of Management Studies
• SJES Polytechnic College & School
• Cambridge Institute of technology
• Sea College of Engineering
• Indus Valley College

Post Office
• RMS Colony Post Office

Park & Play Area
• SEA Football Ground
• Seegehalli Lake Park
• Children's Park
• Proposed Swathanthra Nagara Park
• Garden City Sports Club
• Bhattarhalli Udyanavana



**We don't sell you just homes,
we partner with you for a lifetime**

5 Elements Realty is a Bangalore based company that offers developed plots, custom built villas, bungalows and premium apartments.

We are driven by the philosophy of the Five Elements that make up this universe and believe that it is the harmony of the Five Elements within us - Earth, Fire, Air, Water and Akash that bring Happiness and Peace.

Wherever these Five Elements reside in harmony, there resides happiness and peace. Through this beautiful philosophy is reflected the cherished principles of 5 Elements Realty.

5 Elements Realty presents

ADITHYA GREEN GARDENS

Premium Apartments 2 & 3 bkh

Specifications

Doors & Windows

Main door Frame - Teakwood
Main door Shutter - Flush Door with Teak finishing
Internal doors - Teakwood frame and flush doors with rosewood finish
Windows - Powder coated three/two tracks Aluminium/UPVC, glazed hinged/sliding windows
Iron Security Grills, UPVC French windows without grill

Kitchen

20mm Granite platform and SS Sink
Glazed ceramic tiles upto 4ft above granite platform.

PROVISION FOR:

Aqua-guard point and Exhaust / Chimney Points in kitchen
Washing machine point in utility area

Paint

Interior - apcolite emulsion paint with roller finish
Exterior - external emulsion paint with Spectrum texture at selected portions
MS grills and railings - enamel paint

Flooring & Tiling

Vitrified tiles flooring & skirting for living, dining, kitchen, bedrooms, and passage leading to bedrooms
Anti skid/matt ceramic tiles flooring in toilets
Anti skid ceramic tiles flooring for balconies and utility
Staircases and Common areas: Granite / Colour vetrified flooring

Toilets

Wall finish - Glazed ceramic tiles (7ft from floor)
Fittings - Good quality white ceramic ware of Hindware / ISI Marks
Diverter & wall mounted commode
Concealed plumbing lines with CP fittings of Jaguar or equivalent make
Toilet ventilators made of wood with glazed louvers/ fixed glass and with a provision for exhaust fan

Plastering

Internal walls smoothly Cement plastered with lime rendering.
External walls Cement plastered with sponge finish.

Other Specifications

Electrical

Fire retardant electric wires of Anchor/Finolex or equivalent ISI make through PVC conduits concealed in walls and ceilings
Elegant modular electrical switches of Anchor/Roma make or equivalent
3BHK & 2BHK - TV Point living & Master Bed Room
Provision for split A/C power point in master Bedroom
Provision for geyser in all toilets

Plumbing

All plumbing lines are pressure tested
All water supply lines are of CPVC/GI of reputed make
Sewage lines will be of PVC make

Lifts

2 Lifts of Suitable Size and Capacity



Unit-wise Apartment Area		Unit-wise Apartment Area	
Unit 1	1133 / 1366 Sq.Ft. 2BHK	Unit 16	1121 Sq.Ft. 2BHK
Unit 2	1135 / 1255 Sq.Ft. 2BHK	Unit 17	1136 / 1253 Sq.Ft. 2BHK
Unit 3	1135 / 1255 Sq.Ft. 2BHK	Unit 18	1410 / 1621 Sq.Ft. 3BHK
Unit 4	1135 / 1255 Sq.Ft. 2BHK	Unit 19	1410 / 1529 Sq.Ft. 3BHK
Unit 5	1135 / 1255 Sq.Ft. 2BHK	Unit 20	1414 / 1536 Sq.Ft. 3BHK
Unit 6	1135 / 1255 Sq.Ft. 2BHK	Unit 21	1399 / 1521 Sq.Ft. 3BHK
Unit 7	1135 / 1324 Sq.Ft. 2BHK	Unit 22	1385 / 1510 Sq.Ft. 3BHK
Unit 8	1157 / 1275 Sq.Ft. 2BHK	Unit 23	1408 / 1538 Sq.Ft. 3BHK
Unit 9	1157 Sq.Ft. 2BHK	Unit 24	1288 / 1411 Sq.Ft. 3BHK
Unit 10	1115 Sq.Ft. 2BHK		
Unit 11	1131 / 1201 Sq.Ft. 2BHK		
Unit 12	1131 / 1201 Sq.Ft. 2BHK		
Unit 13	1094 / 1213 Sq.Ft. 2BHK		
Unit 14	1121 / 1191 Sq.Ft. 2BHK		
Unit 15	1094 Sq.Ft. 2BHK		

