



Beverly Woods Villas
Live the 'no compromise' life.

“ Never settle for
second-best
when you can
have the first. ”

There are a select few in this world who always expect a higher standard. When you aim high, you achieve more. When you want that freedom of space, you prefer a villa and not an apartment. Beverly Woods Villas are designed with you in mind and they are yours for less than the price of an apartment.



“ Set impossibly high standards. The finest will be able to meet it. ”

Truth is that Bangalore simply has not seen villas like this.

Beverly Woods Villas give a new dimension to space. From an ultra large living room, to three spacious bedrooms with attached baths, to a cozy family room for TV and movies, to a stunning deck, these villas have it all. There is more space even in the extra-height ceilings. Look into the details - you will find several such flourishes at Beverly Woods.



Beverly Woods Villas. Enjoy a new dimension to space.

“ When you are never comfortable with the average. ”

Enjoy the evenings in style and let your mind stretch. You will just love the gorgeous deck and open spaces, each designed with your family and friends in mind. The design is truly international, so you can relax or entertain in style.



Gorgeous outdoor spaces, to enjoy the wonderful weather with your friends and family.

“ When friends and neighbors are not optional, but essential. ”

Revel in love and laughter in the impeccably designed open hub, a covered front patio. Designed in tandem with the principles of new urbanism that welcome a close bond with friends and neighbors, the open hub is a haven for togetherness, for the family or when the neighbors are included in your circle of happiness.



Designed with the principles of new urbanism, the patio is a haven for fun and togetherness.

“ When you don't believe in half measures and wish to raise the game. ”

When you want perfection, only Beverly Woods can deliver. Luxury reaches a new level at Beverly Woods, from floor to roof. From the elegantly polished Kota stone flooring to the attractive rooflines with its rich dash of colours, these villas stand apart.

Great care has been taken when choosing the fittings. Whether it's the stylish maroon Schneider Unica switches, or the marble bathrooms with imported fixtures, Beverly Woods will leave you feeling like you are living abroad.



Luxury reaches a new level at Beverly Woods, so you feel like you are living abroad.

“ When your desire for perfection notices the minutest detail. ”

Enjoy the vast interior spaces that let you live a lifestyle that should cost several times as much. The attention to optimizing every space so that you get more for your money is evident everywhere. From the massive living room, to the huge deck, large counter tops in the bathrooms, to the spacious family room, everything in these homes speaks of a luxury lifestyle. Feel alive in your bright and spacious home as you relax and take in the scintillating views. And in the evenings, party or just relax with the stars sparkling above.



Feel alive in the spaciousness, and experience the finer nuances of luxury.

“ When you are
game for more. ”

Do a few relaxing laps in the
large pool or sharpen your
game in the well-appointed
clubhouse.

Choose your sport, play to win.



Sharpen your game.



The Beverly Club

“ For those who believe that excellence is a constant. ”

Applaud the truly world-class flair that places Beverly Woods in a class of its own. Blueprinted by Jeff Kiser, an acclaimed architect from the U.S., Beverly Woods brings international standards to Indian living.

Beverly Woods is brought to you by Prime One Corp, a part of SmartOwner, Asia's leading property investment company, which is founded by experienced NRIs with deep real estate experience in the United States. Partnering Prime One Corp is Enessen Estates, one of South India's fastest growing developers with many marquee projects to its name.



Actual photos of properties in the U.S. designed by Prime One Corp's founders.

SPECIFICATIONS

- Kota stone flooring throughout
- Marble flooring in bathrooms
- Floor to lintel height full windows
- Spacious homes with living, dining, family room, deck, patio and multiple parking spaces
- Spacious bathrooms with bathtub option in many villa plans

- Beautiful, international villa designs
- 100% DG backup for the entire villa (not just for your fans and lights)



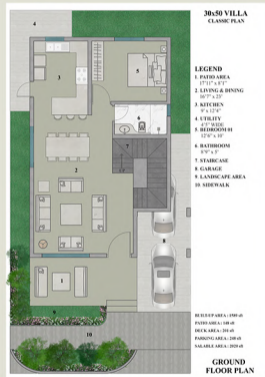
Making sure kids are fully occupied, with 'play'.

“ When you want more room every day, to dream and do. ”

We understand the special people who will make Beverly Woods their home, they have a yen for more... of life, laughter, love. So we give them more, starting with the floor plans that have been so innovatively designed that space seems to take that extra dimension. The truth is that we have packed in so many delightful 'extras' to make your everyday living more rewarding.

FLOOR PLANS







**60x40 VILLA
EAST FACING
CLASSIC PLAN**



BUILT - UP AREA : 2379 sft
 PATIO AREA : 237 sft
 DECK AREA : 139 sft
 PARKING AREA : 308 sft
 LANDSCAPE AREA : 280 sft
 SALABLE AREA : 3075 sft

**GROUND
FLOOR PLAN**

LEGEND

- | | | |
|-----------------------------|--------------------------------|-------------------------|
| 1. FOYER 6'7" x 8'2" | 6. BATHROOM 7'2" x 8'4" | 11. PATIO 12'3" x 9'11" |
| 2. LIVING 17'11" x 15'10" | 7. POWDER ROOM 4'9" x 8'4" | 12. STAIRCASE |
| 3. DINING 10'6" x 15'9" | 8. PORCH 12'8" x 9'3" | 13. SIDEWALK |
| 4. KITCHEN 9'2" x 15'9" | 9. LANDSCAPE AREA 30'4" x 9'3" | |
| 5. BEDROOM 01 11'7" x 14'8" | 10. GARAGE 17'1" x 18'1" | |

**60x40 VILLA
EAST FACING
CLASSIC PLAN**



LEGEND

- | | | |
|-----------------------------------|-------------------------------|--------------------------------|
| 14. FAMILY ROOM 15'0" x 15'2" | 17. BEDROOM 02 11'10" x 14'9" | 20. BATHROOM 7'2" x 7'3" |
| 15. MASTER BEDROOM 20'11" x 15'5" | 18. BATHROOM 6'6" x 9'6" | 21. LINEN+ LAUNDRY 7'2" x 2'6" |
| 16. MASTER BATHROOM 13'4" x 10'3" | 19. BEDROOM 03 11'7" x 13'2" | 22. DECK 12'3" x 11'4" |

**FIRST
FLOOR PLAN**

**60x40 VILLA
WEST FACING
CLASSIC PLAN**



BUILT - UP AREA : 2379 sft
PATIO AREA : 237 sft
DECK AREA : 139 sft
PARKING AREA : 308 sft
LANDSCAPE AREA : 280 sft
SALABLE AREA : 3075 sft

**GROUND
FLOOR PLAN**

LEGEND

- | | | |
|-----------------------------|--------------------------------|-------------------------|
| 1. FOYER 6'7" x 8'2" | 6. BATHROOM 7'2" x 8'4" | 11. PATIO 12'3" x 9'11" |
| 2. LIVING 17'11" x 15'10" | 7. POWDER ROOM 4'9" x 8'4" | 12. STAIRCASE |
| 3. DINING 10'6" x 15'9" | 8. PORCH 12'8" x 9'3" | 13. SIDEWALK |
| 4. KITCHEN 9'2" x 15'9" | 9. LANDSCAPE AREA 30'4" x 9'3" | |
| 5. BEDROOM 01 11'7" x 14'8" | 10. GARAGE 17'1" x 18'1" | |

**60x40 VILLA
WEST FACING
CLASSIC PLAN**



LEGEND

- | | | |
|-----------------------------------|-------------------------------|---------------------------------|
| 14. FAMILY ROOM 15'0" x 15'2" | 17. BEDROOM 02 11'10" x 14'9" | 20. BATHROOM 7'2" x 7'3" |
| 15. MASTER BEDROOM 20'11" x 15'5" | 18. BATHROOM 6'6" x 9'6" | 21. LINEN + LAUNDRY 7'2" x 2'6" |
| 16. MASTER BATHROOM 13'4" x 10'3" | 19. BEDROOM 03 11'7" x 13'2" | 22. DECK 12'3" x 11'4" |

**FIRST
FLOOR PLAN**



PRIME ONE CORP



ENNESSI

Beverly Woods
Live the 'no compromise' life.

“ Excellence is the only goal, always. ”

Everything is international standard, even outside. The car parking is generous, so you don't have to park on the street. The sidewalks are wide, so you don't have to walk on the road. The roads are wider, and so are the green strips and landscaping, as seen abroad.

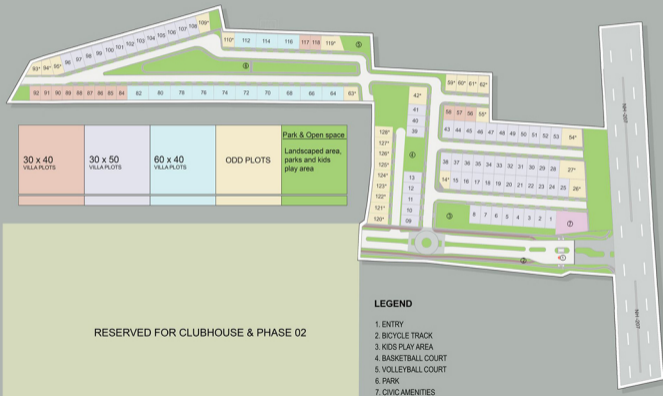


Everything is international standard, even outside.

“ Master plans...
for amazing
tomorrows. ”

Expansive thinking is so evident in the master plan, which captures every nuance... and highlight, of this extraordinary project, so that you know that your home will host unforgettable memories as the days shimmer by.

BEVERLY WOODS MASTER PLAN



AMENITIES

- Grand Clubhouse
- 2 Tennis Courts
- 2 Badminton Courts
- 1 Basketball Court
- 1 Volleyball Court
- Kids Play Area
- 6000 sft Swimming Pool
- Gym
- Yoga cum Aerobics Room
- 1 Squash Court
- Indoor Games Room (TT, Billiards, Carom)
- Party Hall
- Board Room cum Conference Room
- Convenience Store
- Creche
- Salon
- Restaurant and Kitchen
- Mini Soccer Field

The clubhouse will be owned and managed by a private entity and will be developed as an independent and separate development. The purchaser of a unit in Beverly Woods does not own any part of the clubhouse and is only entitled to usage of the clubhouse and its facilities by paying the Clubhouse membership fees as per the prevailing rates charged by the Clubhouse.

LOCATION

Beverly Woods is located within easy commuting distance from three of Bangalore's tech hotspots - Whitefield, Outer Ring Road and Sarjapur Road. This beautiful gated community has direct access on NH-207, and just a few minutes from some of the best international schools of Bangalore, such as TISB, Indus, Inventure and Greenwood High.



A Prime One Corp - Enessen Estates Project

www.beverlywoods.in



Prime One Corp
8th Floor, Delta Block
Sigma Tech Park, Whitefield
Varthur Main Road
Bengaluru - 560066
Karnataka



Enessen Estate Holdings Pvt Ltd
Level 3, Embassy Diamante
No. 34, Vittal Mallya Road
Bengaluru - 560001
Karnataka

RERA No.: PRM/KA/RERA/1265/347/PR/191220/003073

Website: www.rera.karnataka.gov.in

Disclaimer: This brochure is conceptual and not a legal offering by the Company and is to be used for general information only. Nothing in the brochure should be construed as advertising, marketing, an offer for sale, or an invitation to purchase a unit in the project. The images used in the brochures are indicative of style only. Computer generated images and rendered images are the artist's impression and may not be indicative of the actual designs. The Company, at its sole discretion, reserves the right to change, delete, or add any specification, design, amenity or plan mentioned herein based on site conditions, construction necessity or acting on directions from architects, engineers or authorities. No information given in this brochure creates or expands the scope of any warranty. The information in this brochure is presented as general information and no representation or warranty is expressly or impliedly given as to its accuracy. Beverly Woods is a real estate development that consists of the layout being developed by Regal Dwellings Pvt. Ltd.