

Patel's

# ZION

Patel's  
**ZION**

**ABOUT PROJECT**

Located at Ambarnath just 15 mins from Ambarnath station, this luxurious spacious apartment will popularize the concept of comfortable living. **Patel's Zion** a 18 storey tower of 1 & 2 BHK flats stands with amazing architecture with future. The facilities and amenities, more modern designed with a focus on modern luxury.

**ABOUT COMPANY**

**Patel Group** is a well established name in business and social circles since 1988 with its presence in Central suburbs beyond Thane.

Primarily a retailer, operating on retail space of more than 75,000 sq. ft. and proudly serving to 2.5 lakhs+ of customers in their house hold requirements.

Since more than a decade, Patel RPL Realty has successfully ventured into the field of real estate development.

**Patel Group**, a well crafted initiative by visionary **Mr. Bechar Raghavji Patel**, who dreamt of building better lives with a vision to provide basic needs of Roti, Kapada Aur Makaan at a cost that is affordable to all.

No matter what home means to you, there is something nostalgic about the place we call home. It's the place where we eat, the place with friends and family, home decorations that help us remind of special memories and every little memory we create in the place we call our own.

We, at **Patel RPL Realty**, believe in building beautiful homes just for you; where love resides, memories are created, friends always belong and laughter never ends. With commercial and residential spaces spanning over more than 6,67,000 sq. ft., we believe in making your dream come true!

Our success in business is based upon 3 key principles - **quality, service & affordability!**



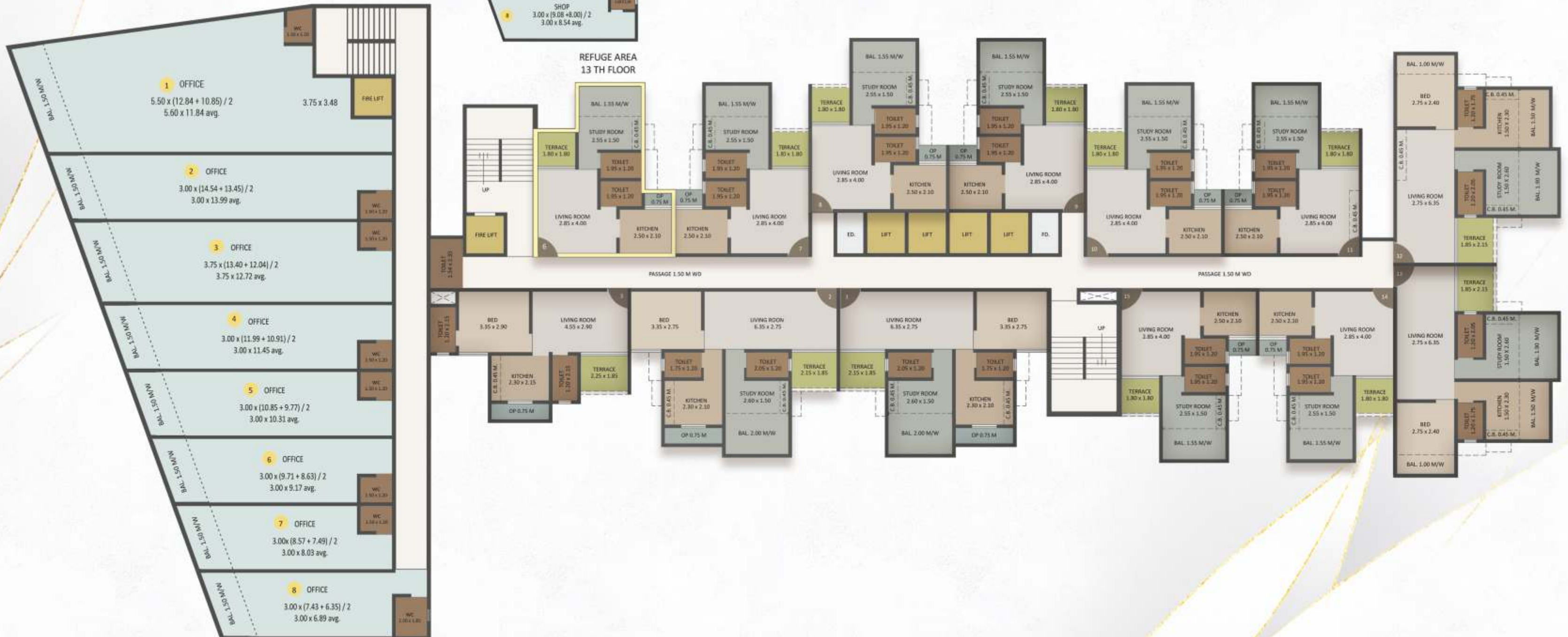
# FLOOR PLANS

Patel's

## GROUND FLOOR



## REFUGE AREA 13 TH FLOOR



# FLOOR PLANS



EVEN FLOOR 8, 12, 14, 16 & 18

ONLY ON  
4, 6 & 10



ALL BALCONIES ARE  
ENCLOSED

ODD FLOOR 13, 15 & 17

ONLY ON  
3, 5, 7 & 9

# FLOOR PLANS



FLOOR 11TH



FLOOR 2ND

ALL BALCONIES ARE ENCLOSED

1ST FLOOR

ALL BALCONIES ARE ENCLOSED

## PROJECT FEATURES



CHILDREN PLAY AREA



INDOOR GAMES



CCTV IN COMMON AREAS &  
ELEVATORS



BRANDED ELEVATORS



BACK UP FOR LOBBY, LIFT,  
STAIRS & PUMPS



DESIGNER ENTRANCE  
LOBBY

# Patel's ZION

## INTERNAL AMENITIES

- Club house with Gymnasium
- Plaster / Putty finished wall in all flats.
- Distemper Paint on Internal Walls & Acrylic Paint on External Walls.
- POP False Ceiling in living Room.
- Special brick Bat Water Proofing treatment on Terrace.
- Vitrified Flooring in entire flats.
- Wooden Doors with Laminate on both side in every room with elegant handles & Locks.
- Well Designed Bathroom with Deluxe Bathroom Fitting
- Branded Sanitary ware, Provision for Exhaust Fan & Geyser Point in Bathroom.
- Concealed Plumbing & C.P Fitting of reputed make
- Tiles dado Up to Beam Bottom for WC & Bath
- Powder Coated heavy aluminum sliding window with granite window sill.
- Designer Quality Tiles above Platform up to Door level.
- Granite Kitchen Platform with stainless steel sink & Service Platform.
- Modular Electrical Switches
- Branded Concealed copper wiring with MCB/ELCB
- Cable TV/Telephone point in living Room & Master Bed Room.





scan for directions

Patel's  
**ZION**



Site at : Pale, Near Shiv Mandir, Ambarnath (E) - 421501

Office at : 30, Jeevandeep, Station Road, Ambarnath (E) - 421501

 **8767 098 098**

 **sales@patelrplrealty.com**



The project has been registered via **MAHA RERA No. : P51700023383** and is available on the **Website : <https://maharera.mahaonline.gov.in>** under registered projects. All images and illustrations shown in the show flat herein are artistic impressions and are purely conceptual in nature and are indicative only. Products, features, furniture, floor covering, curtains mirrors, wall hangings, light fittings, furnishings, picture, images, etc are shown as illustrations and for reference only. The standard offering does not include displayed furnishing and fit-out in the brochure.

**Advocates & Solicitors :** Law Scribes  
**Licensed Engineer :** Pramod Kamble  
**RCC Consultant :** Atul Kudtarkar & Associates