



Nature by your side

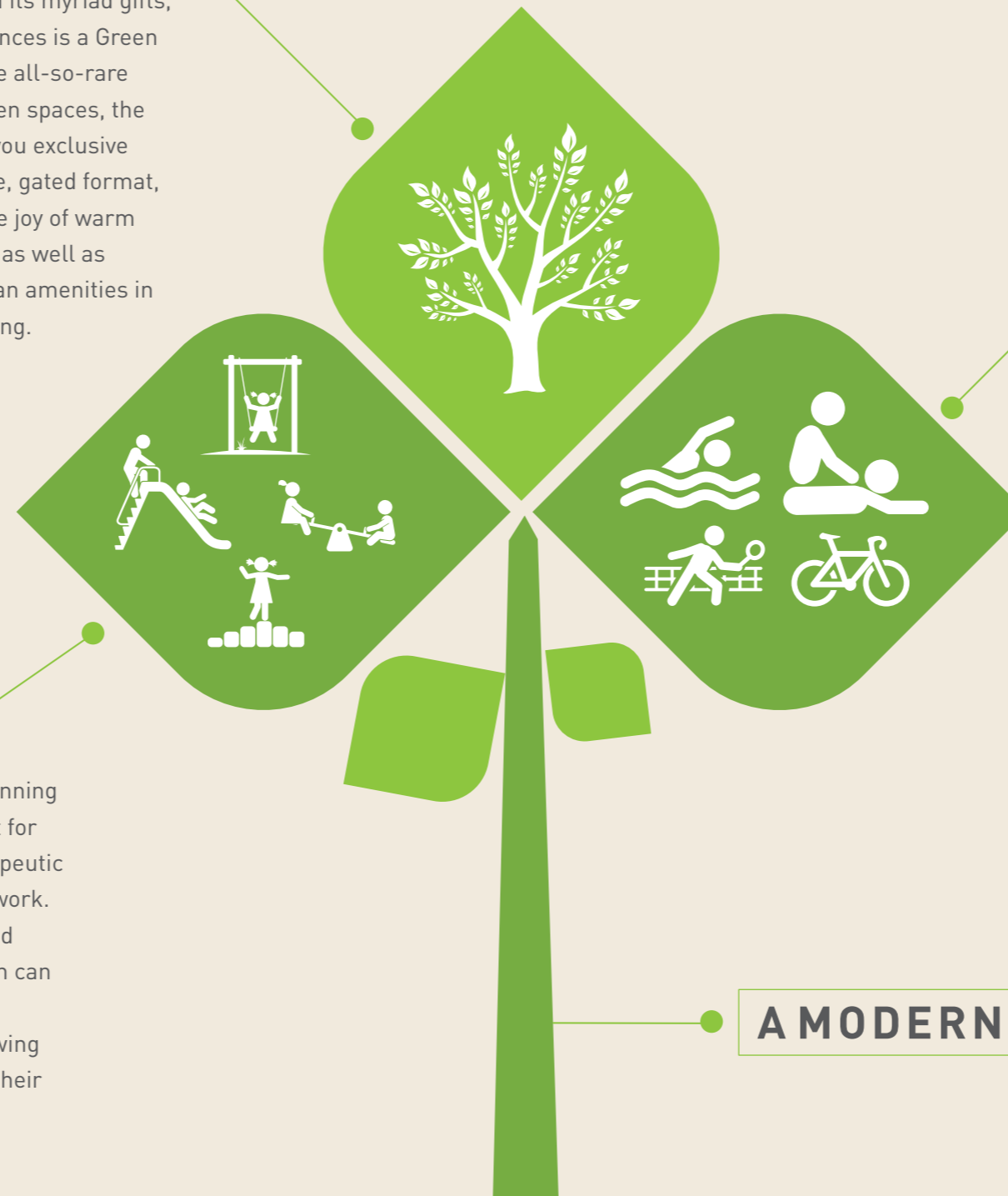
Soak up the sunshine every morning, feel the breeze in your face and experience nature in its truest form. Welcome to Woodview Residences from Lotus Greens.

For those who value nature's resplendence and its myriad gifts, Woodview Residences is a Green paradise. With the all-so-rare luxury of wide open spaces, the township brings you exclusive homes in low-rise, gated format, encompassing the joy of warm community living as well as cutting-edge urban amenities in a lush green setting.

Top notch expertise in design and planning has created an inspiring environment for healthy living. Relax yourself in therapeutic comfort at the end of a hectic day at work. Treat yourself to reflexology walks and spend time on the yoga lawn; children can enjoy being one with Nature in the sandboxes and crawler's area. The swing sets will make them look forward to their play time each day.

Woodview Residences is meticulously planned to always keep you closer to nature. Seamless Greens Planning provides for a common garden at the backyard of each house. The enveloping landscapes are a refreshing sight from the terrace balconies. Finely designed cycling tracks will inspire the young and old alike. Warm and friendly community living resulting from an easily accessible neighbourhood will give a fillip to social life across age-groups.

A MODERN UTOPIA AMID NATURE





Bliss

to start of the day

What can be more refreshing and rejuvenating than a walk at the break of dawn, in unison with Nature's elements; with little to break the golden silence except the chirping of a few other early risers.

THE PERFECT INGREDIENTS FOR A HEALTHY LIVING



AN OASIS OF COMMUNITY LIVING

Community living is all about a lifestyle beyond the standard Amenities. At Woodview Residences, it manifests itself in elaborate facilities catering to the needs of education, healthcare, religion and more. Be pleasantly surprised to find food joints, crèche, nursery school, high school, religious building, convenience stores and shopping arenas within easy reach.



LOCATIONAL DELIGHT

Woodview Residences is strategically located at Gurgaon's Sector-89, 90, while the surrounding neighbourhood is considered to be Delhi and NCR's prime residential estate, it is located in close proximity to 150 Mtr Wide Dwarka Expressway and strategically placed between Sector 88 (Commercial) & Sector 94 (Open Spaces) - one of the low density sectors of Gurgaon. A 135 Mtr Multi-utility corridor on one side and 75 Mtr wide Pataudi road on the other makes it eminently accessible and convenient.




FRIENDLY AMENITIES

The luxuries of yesteryears are the necessities of today. Accordingly, the interiors are replete with amenities such as Modular Kitchen with Chimney & Hob, VRV/VRF Air Conditioning (on select plot sizes), Imported Marble and Engineered Wood Flooring, Wardrobes, Video Door Phones and Modern Bathrooms. Indeed a holistic mechanism to make your life easy and pleasant.



INNOVATIVE LANDSCAPING

Our international landscaping consultants have put in their best to create an inspiring environment for healthy living. The back door of each house opens out to seamless greens in the backyard. Rejuvenation through a bit of indulgence in your kitchen garden may well be the right recipe for your good health. The enveloping lush landscapes in the township are a refreshing sight from your terrace balcony.



A host of benefits for a greener living

Eco-friendly communities

Rain water harvesting

Solid waste management

Themed aroma gardens

Time operated streetlights to
conserve energy

Alternative energy, solar heaters and
solar lighting

Seamless greens



Houses at Woodview Residences have been designed to meet the SVAGRIHA green rating norms. Known for our GreenAbility drive and focus on Environmental Sustainability, we have partnered with GRIHA to ensure that the SVAGRIHA-rated residential units at Woodview Residences facilitate environmental sustainability, energy efficiency and meet urban design excellence. Construction will adhere to the norms and practices of Green-rated structures, such as measures to reduce energy and water consumption, recycling, use of natural resources, waste management, etc.







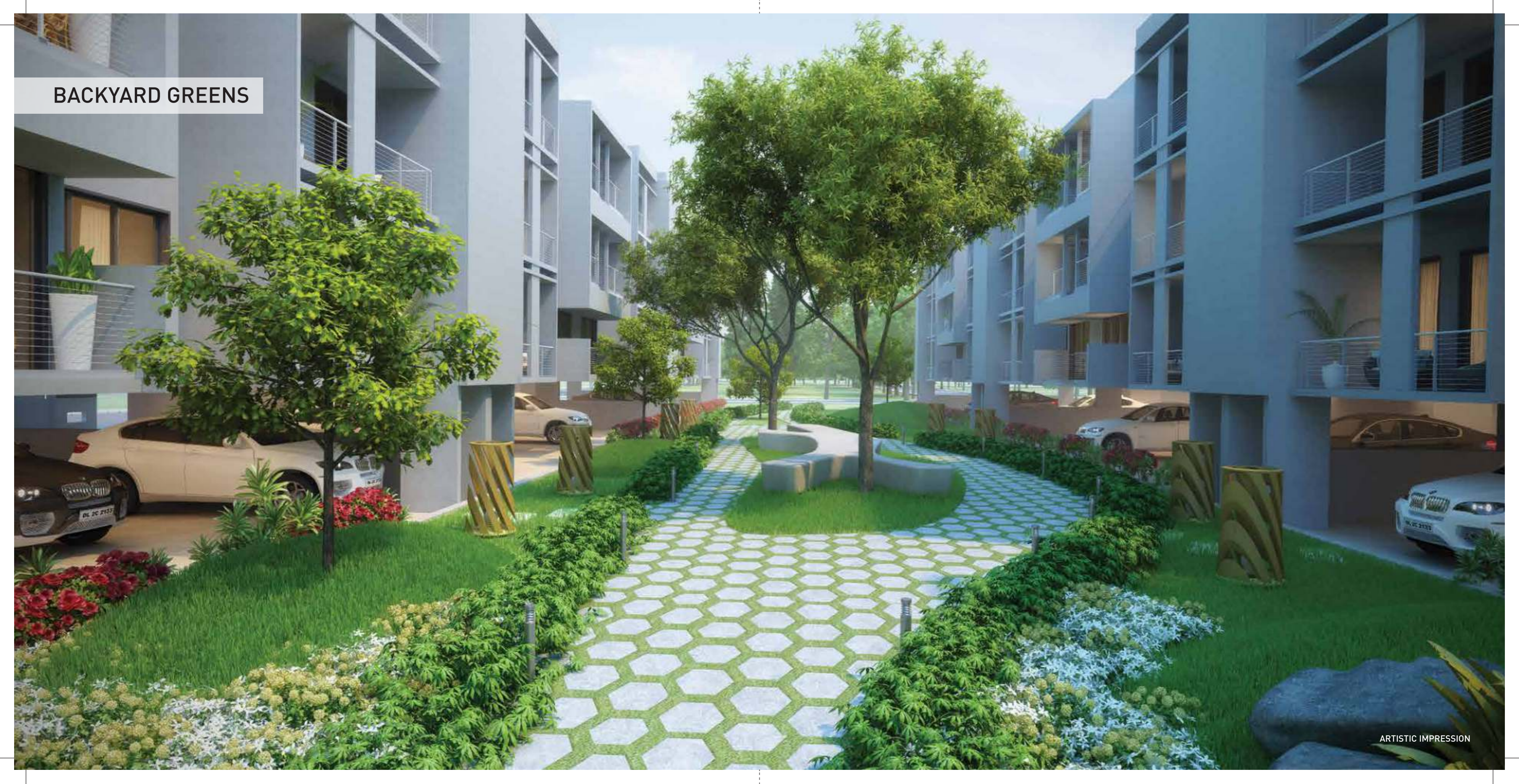
VILLA - E
101



VILLA - E
102

ARTISTIC IMPRESSION

BACKYARD GREENS



BACKYARD GREENS - LANDSCAPED TERRACES



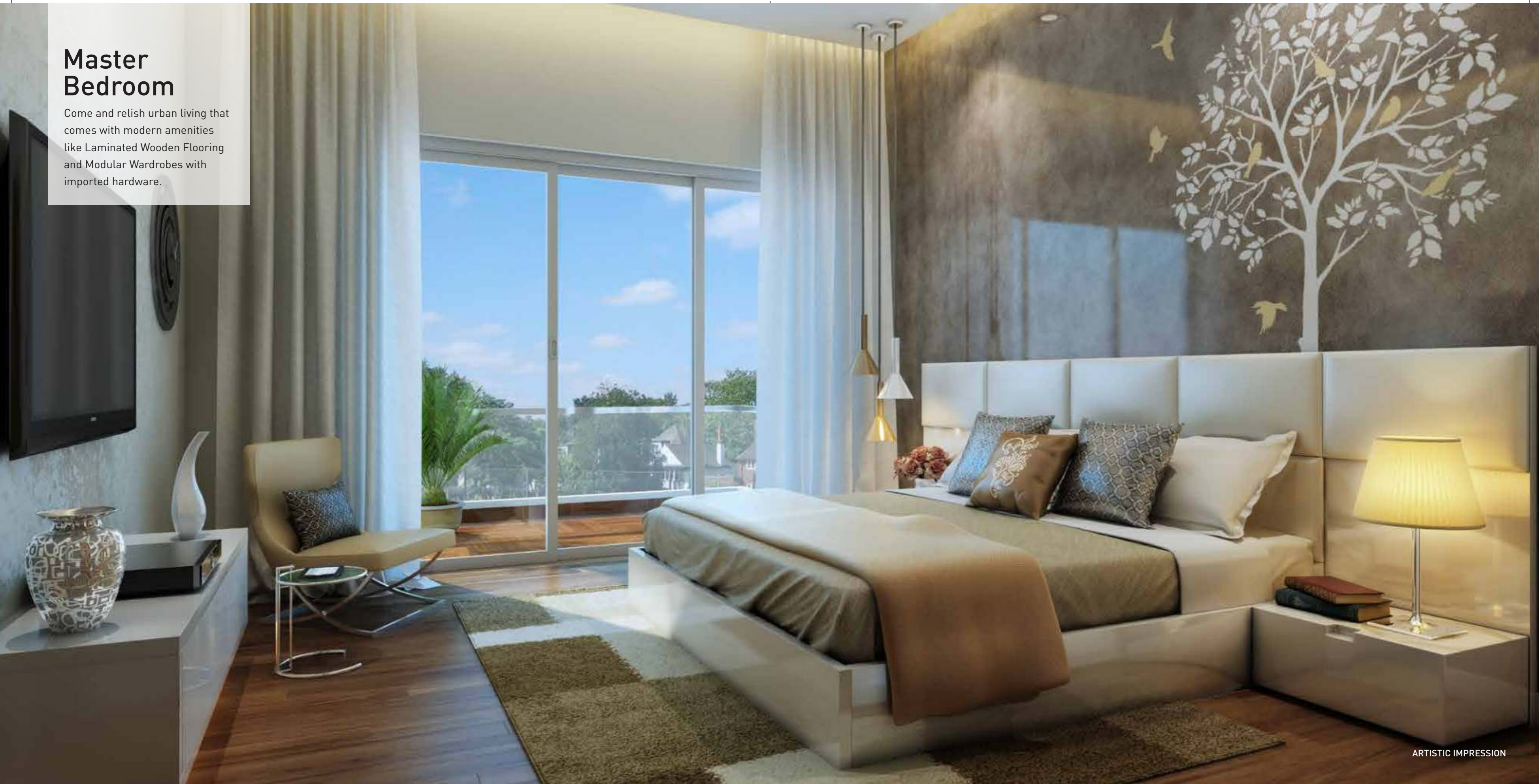


A BALCONY WITH A VIEW



Master Bedroom

Come and relish urban living that comes with modern amenities like Laminated Wooden Flooring and Modular Wardrobes with imported hardware.



Living Area

Large and comfortable living room, exquisitely designed with openness and airiness.



Dining

Dining area and the breakfast counter are conveniently integrated. So you can enjoy your meals served piping hot and enhance your dining experience.



Kitchen

Our kitchen combines convenience with style, these aspects of your home have been carefully orchestrated to address the needs of a high-quality and contemporary lifestyle.



Master Bathroom

Our master bathroom complements the bedroom it belongs to and it can be customized to reflect your colour and material preferences.

Club

Spa

Theatre

Pool-side Cafe

Gymnasium

Swimming Pool

Library

Lawn/Table Tennis

Squash

Badminton

Billiards/Snooker

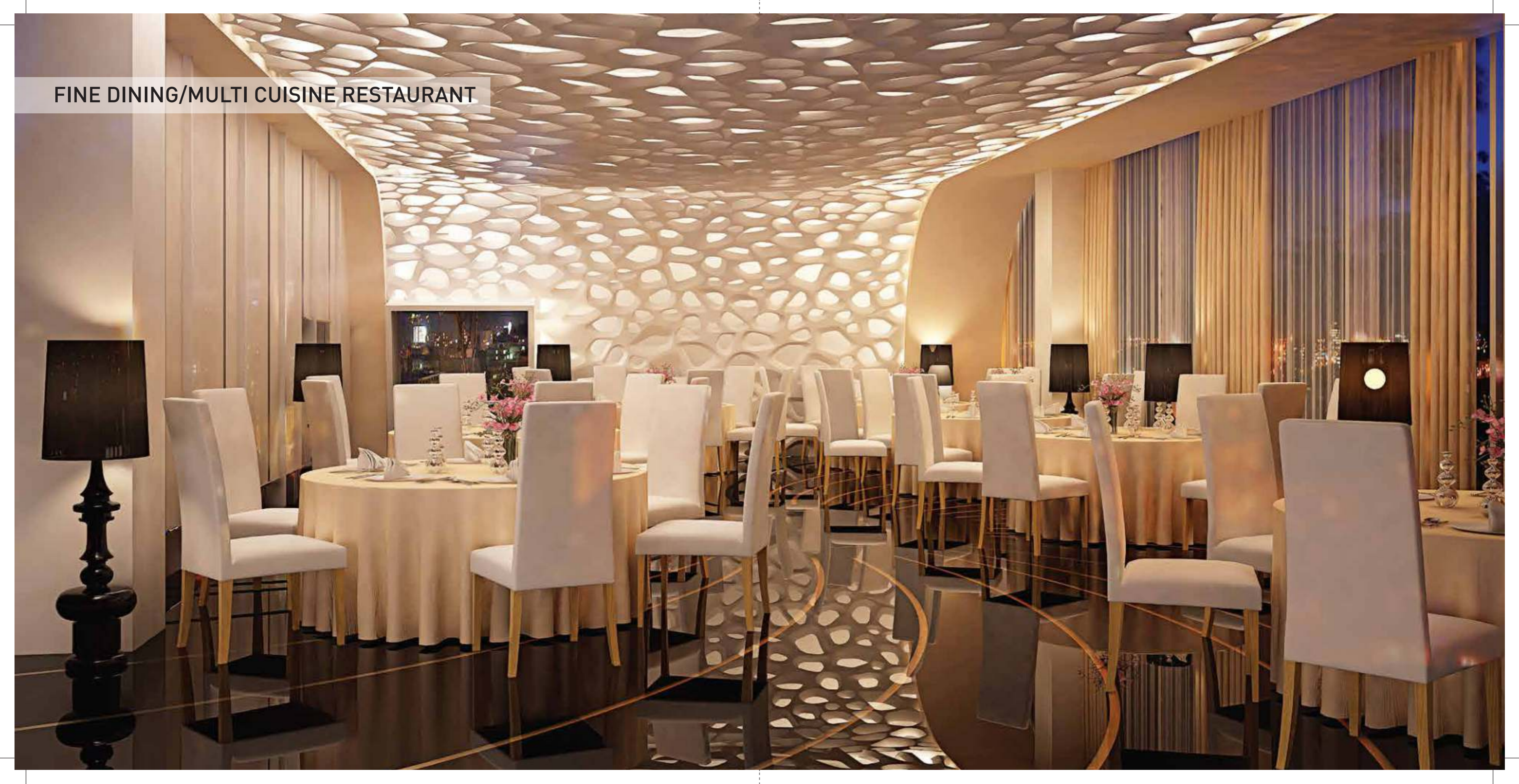
Aqua Gym

Multi-Cuisine Restaurant

Basketball



FINE DINING/MULTI CUISINE RESTAURANT





Breath-taking amenities

Our new township is designed to offer you an array of wholesome experiences. With a swimming pool amidst a lush green landscape and a pool side café, you get to enjoy a feeling of complete serenity. Our township provides the ideal setting for those who love to feel luxury and believe in experiencing it to the fullest.

Concierge services

Mechanical car wash

Kids play area

Reflexology walk

Yoga lawn

Gazebo

Soft Soil Running track

Shopping area

Nursery school

High school

Food joint

Dispensary

Religious building

Cycling track

Cricket net

SHOPPING ARENA



Take the joy of shopping to a new high with multi brand stores and a state-of-the-art shopping facility. Designed to become the one stop destination for your shopping needs and entertainment.



FOOD JOINT



Make sure your family and friends get a good time with world class delicacies and mouth watering dishes in one of the many food joints and eateries.



SCHOOL

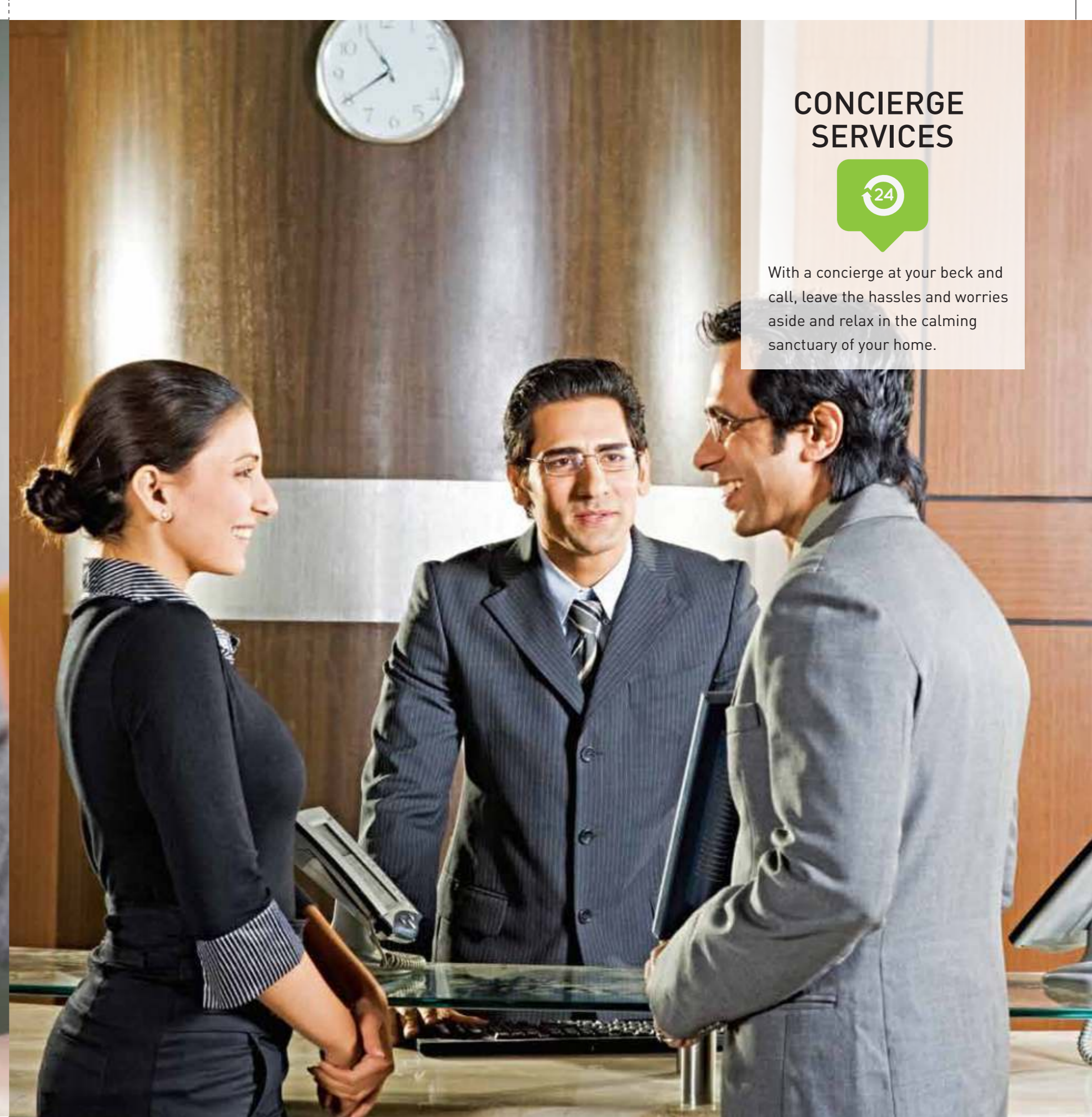
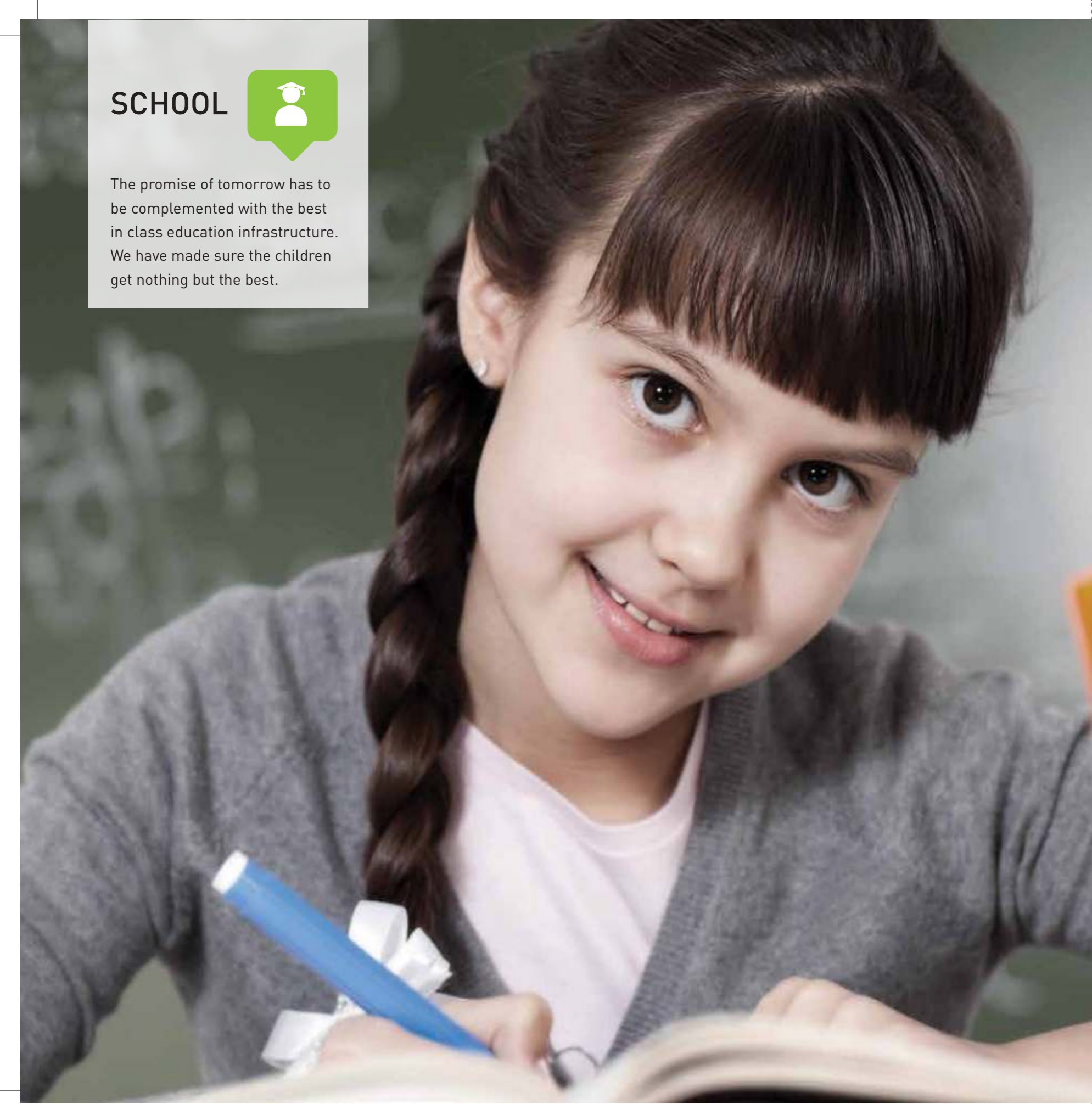


The promise of tomorrow has to be complemented with the best in class education infrastructure. We have made sure the children get nothing but the best.

CONCIERGE SERVICES



With a concierge at your beck and call, leave the hassles and worries aside and relax in the calming sanctuary of your home.



KIDS PLAY AREA



Hit the play area with your kids and let them have a fun time with our swing sets, sandbox or small slides. We have separate play areas for infants and toddlers/preschoolers.



INTERNATIONAL ARCHITECT

BENOY

Benoy is an award winning international firm of Architects, Interior Architects and Graphic Designers working from design studios in the United Kingdom, Abu Dhabi, Mumbai, Singapore, Hong Kong, Kuala Lumpur, Shanghai and Beijing. The company is primarily known for its global retail architecture, with projects such as Westfield London UK, Elements Hong Kong, and ION Singapore. Benoy's work covers the entire architectural spectrum, from leisure, with projects like (Ferrari World Abu Dhabi), towers architecture (with projects like ION Residences), mixed-use (such as Bullring) and hospitality (such as sky100). Their philosophy is that 'creativity and viability are not mutually exclusive'.



SPECIFICATIONS

Area	Location	Specifications
Drawing/Dining	Flooring Wall Ceiling	Imported Marble POP Punning with Healthy Acrylic emulsion Paint Oil Bound Distemper with designer cornice
Master Bedroom	Flooring Wall Ceiling	Engineered Wood POP Punning with Healthy Acrylic emulsion Paint Oil Bound Distemper with designer cornice
Bedrooms	Flooring Wardrobes Wall Ceiling	Laminated Wooden Flooring Modular Wardrobes with imported hardware POP Punning with Healthy Acrylic emulsion Paint Oil Bound Distemper with designer cornice
Kitchen	Flooring Kitchen Wall Ceiling	Imported Marble International Style Moduler Kitchen with Exhaust, Hob and Chimney, Granite counter top, stainless steel sink and cp fittings Dado/Tiles upto 2 feet above the counter and rest Healthy Acrylic Emulsion Paint Oil Bound Distemper with designer cornice
Toilets	Flooring Wall Fittings & Fixtures Ceiling	Matt Finish Homogeneous Ceramic Tiles/Vitrified Tiles Digital Ceramic Tiles Jaguar/Grohe/Duravit/Kohler/equivalent OBD/False Ceiling/MR Board
Basement	Flooring Wall Ceiling	Matt finished Ceramic/Vitrified Tiles OBD OBD
Balcony	Flooring Wall Ceiling Railing	Matt finished Anti Skid Ceramic Tiles Weather Proof External Texture paint OBD SS with Glass on front side MS Railing on the rear side
Staircase	Flooring Wall	Granite Flooring External Texture paint MS Handrail with hardwood tops
Stilt	Flooring Wall Ceiling	Heavy duty antiskid tiles/Cobble Stone in parking area Hardscape/Softscape as per design External Texture paint OBD
General	HVAC DG Electrical Fixtures Elevator Door Windows/Glazings Terrace Treatment Entrance Lobby door	VRV/VRF AC Units 100% Power Backup Light Fittings in common areas & balconies only Copper wiring in PVC Conduits Branded MRL type Veneer Finish flush door/Skin moulded panel door UPVC glazing with toughned Glass Landscaped terraces with ornamental elevational elements Door with Video phone

Disclaimer: Architects & Developers reserve the right to alter the specifications and facilities for design improvement. This communication is purely conceptual and not a legal offering. The developer reserves the right to amend/alter the area, layout, elevations, specifications and amenities.

MASTER PLAN



In the interest of maintaining high standards, all floor plans, layout plans, areas, dimensions and specifications are indicative and are subject to change as decided by the company or by any competent authority.

LOCATION MAP



- Dual connectivity to NH8
- Close proximity to Dwarka Expressway
- Located between sector 88 (Commercial) & Sector 94 (Open Spaces)
- Between 135 M Multiutility corridor on one side and 75 M Wide Pataudi road on the other

Welcome to Lotus Greens

Lotus Greens endeavours to touch lives and create a brighter tomorrow. To realize this ideal, we aim to awaken the potential in everyone, at work, at leisure and at home. We believe that beauty and purity, such as of the Lotus flower, can change lives for the better. It helps us to inspire the Difference. Through relentless dedication to impeccable quality standards and raising the bar even higher, we strive to create and maintain the Difference. In effect, we're building a legacy that will stand the test of time.

Incepted in February 2013, Lotus Greens is a diversified real estate group led by eminent luminaries in the business. We today have significant business interests across Residential, Commercial, Hospitality, Education and Healthcare domains. The leadership team is driven by the ideals, experience and expertise of Founder Mr. Nirmal Singh, and prides itself on having already delivered 14 million sq. ft. of real estate spaces, with a current land bank of 925 acres.

Abundant green landscapes and adherence to green building norms are sacrosanct for all our projects. Our focus is on developing a sustainable future that is committed to the environment. We're actively working on developing sustainable communities by enabling homes for about 12000 families in the next 3 years.

Harbouring a dream to nurture the future of India, Lotus Greens has established the acclaimed Lotus Valley International Schools at Noida and Gurgaon, in partnership with the international Ivy League Brown University - Department of Education. Our intent is to give wing to our dream by establishing 2 more schools in the next 3 years.

Lotus Greens is developing over 1 million sq. ft. of Hospitality space through strategic tie-ups with renowned hotel chains like Four Seasons, FairField and Marriott.

We are also developing a Medical Foundation that encompasses training, teaching, treating, research and clinical practices in an environment of excellence.

With clarity of thought that inspires communities and individuals, we are a trusted partner for life, helping everyone embrace the Difference.

We are LOTUS GREENS, and we welcome you to experience a world where all can Live the Difference.



LOTUS GREENS

LOTUS GREENS DEVELOPERS PVT. LTD.

1st Floor, Vatika Triangle
Sushant Lok I, Phase I
Block A, M.G. Road
Gurgaon - 122002, Haryana

+91 - 87440 - 34477

+91 - 124 - 4919150

gurgaonsales@lotusgreens.in

www.lotusgreens.in

Disclaimer: Visuals shown are an artistic impression of developer's intent. All facilities & amenities are just indicative and are subject to change without prior notice. 1 sq. mtr = 0.0001 sq. hectares » No. & date of License: 59/ 16-07-2013 » Type of colony & its area: Residential plotted colony 101.081 acres » Name of the colonizer: Orris Infrastructure Pvt. Ltd. » No. & date of the approved layout plans: memo no- ZP-921/AD (RA)/ 2013/54488 dt. 15-10-2013 » Total no. of Plots: 854 units » Provision of: High School, Primary school, Nursery school, Community Center, Taxi stand, Milk/Vegetable booths, Creche, Nursing home, Post office, Religious building & ATM » All the approvals can be checked in the office of Orris Infrastructure Pvt. Ltd.#