



ALL IN ONE HOMES

1 & 2 BHK HOMES
RAVET



THOUGHTFUL



Oriented for Max Natural Light And Freshness



Space-optimized Interiors



Partial Solar with Led Lightings



Organic Farming



Maximum Privacy



Dedicated Areas for Kids, and Seniors

CONNECTED



Shopping



Entertainment



Schools



Hospitals



IT Park



MIDC



Max Live-able Space



Sports Facilities



Yoga & Kids Pool



Modern, Well-Equipped Gym



Landscaped Grounds



Designer Double-Height Lobby



Best-In-Class Specifications



Branded Electricals



Branded Sanitary Ware

LUXURIOUS

VALUEPLUS



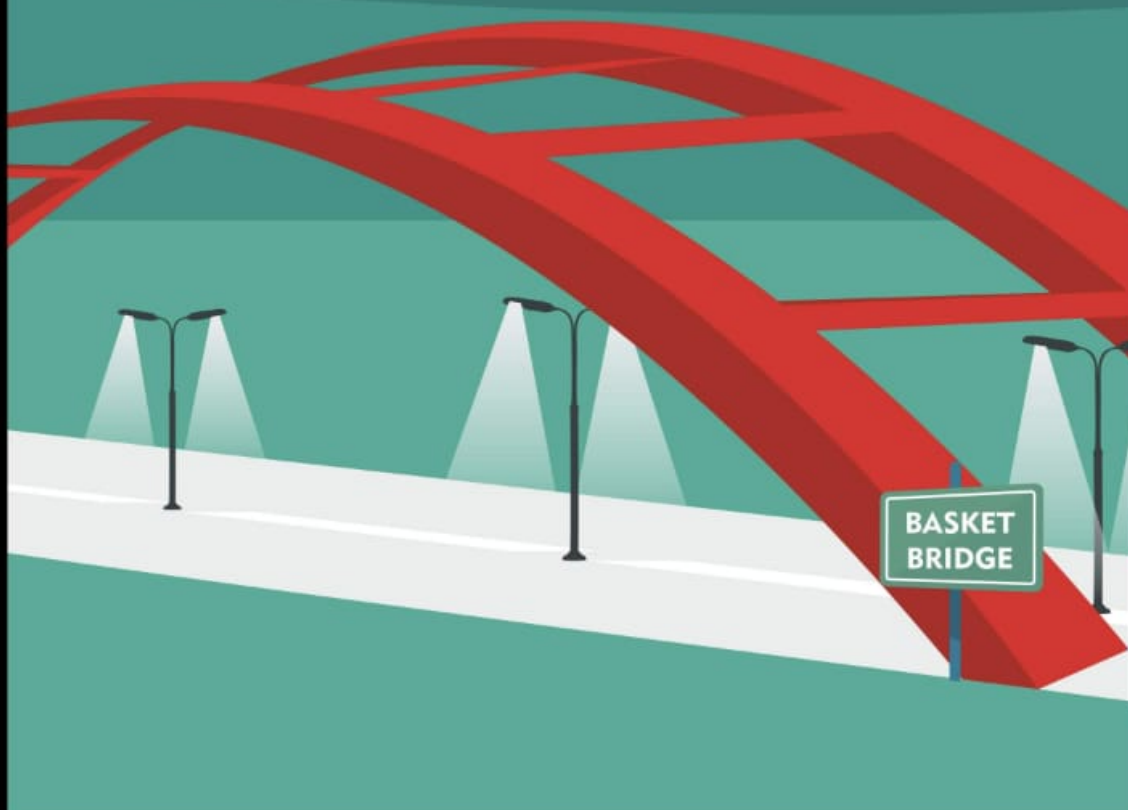
THE NO-COMPROMISE LIFE

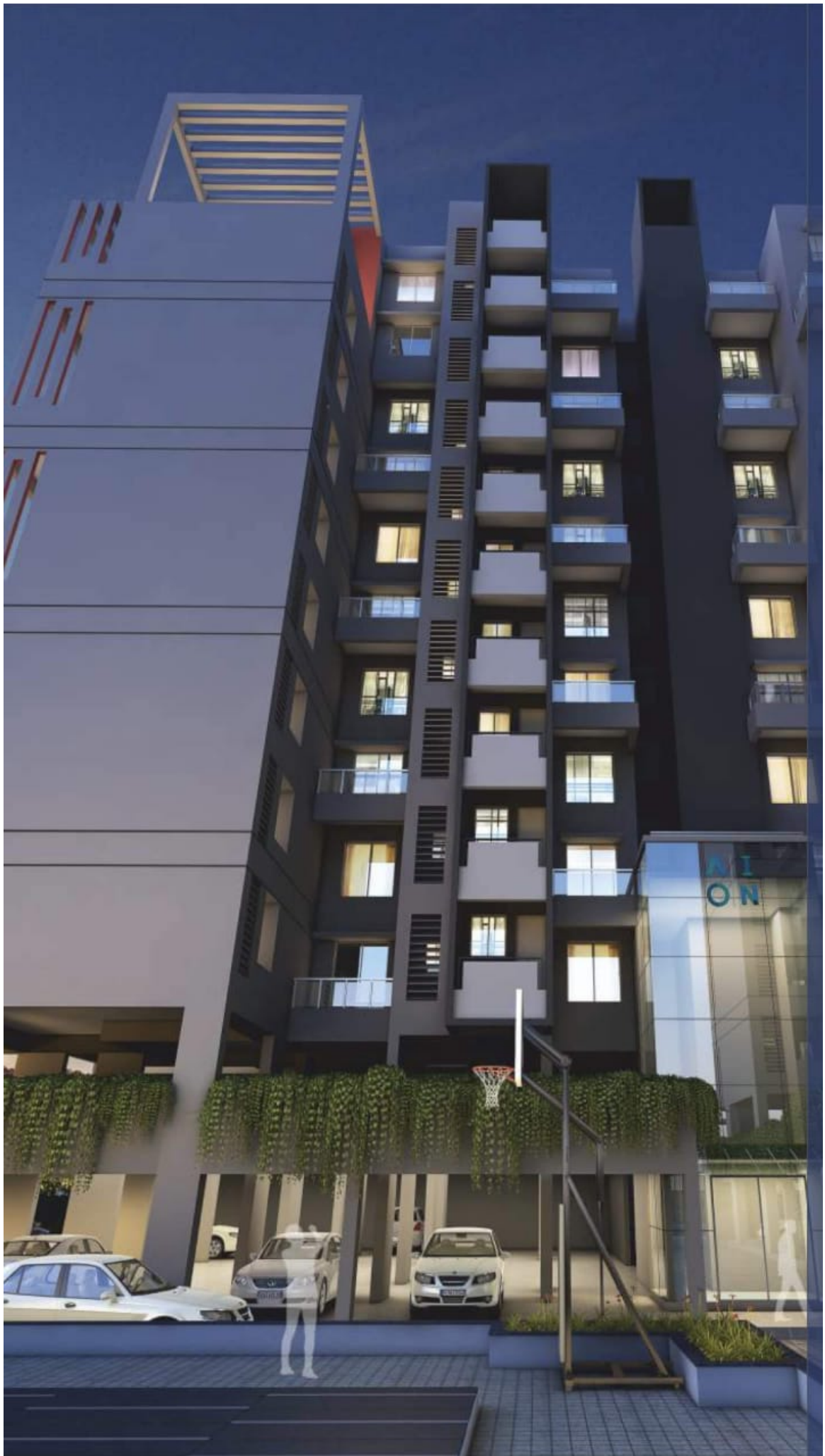
It's time to demand more: more space, more comfort, more leisure, more wellness, more of the good things in life.

It's time to live on your terms, in a home designed to satisfy your highest aspirations, in a location that puts you at the heart of the urban action, enhanced by connectivity.

It's time to come home, to an address where your comfort and convenience go hand in hand and elegance is an essential element of life.

After all **RAVET** is **RAVET!**







**EXPECT
EVERYTHING**





SPACE FOR MORE

ARUN AION gives you everything you need to live the good life. Its thoughtfully planned living areas, filled with sunlight and fresh air, invigorate the senses, creating indoor spaces in harmony with nature. With ergonomically laid out kitchens that will bring out the chef in you, bedrooms that promise to make every good night great and bathrooms designed to refresh you...this is truly a home to complete you.

Square Shape
Spacious Living Room

Six Foot
Wide Passages

Double-Height
Lobby

Big Lifts



DESIGNED FOR A LIFE OF EASE

It's the little details that make a big difference, and a lot of thought and effort has gone into making sure that every nuance of your life at ARUN AION is perfect in every respect. From the elegant branded electrical fittings that will light up your life to bathrooms adorned with the finest sanitary ware, this is a homemade for a lifetime of appreciation.

Plaster and Paint

- Internal plaster: gypsum finish Buildon / Saint Gobin / or similar
- External plaster: double coat in river sand + artificial sand
- Internal paint: oil bond distemper Asian / similar brand
- External paint: acrylic base cement paint / Apex Asian / similar

Flooring / Dado Tiles

- Hall, bedrooms, dining, kitchen, passage: 600X600 vitrified tiles – Vermora / Asian johnson/similar brand
- Terrace & balcony: 300X300 / 450X450 ceramic body floor tiles– Vermora / Johanson/ similar brand
- Kitchen & toilet dado: 300X450 / 300X600 full height (lintel level) ceramic body dado tiles– Vermora / Jhohanson/similar brand
- Common passage area: 450X450 / 600X600 vitrified tiles - ceramic body
- Staircase steps: 300X300 pavit / natural stone
- Main entrance foyer at ground floor: 600X600 - vitrified tiles – Vermora / similar brand

Kitchen

- Platform: in kaddappa base with top of natural stone
- Stainless steel sink: size as per our site conditions- Franky / Citizen / similar brand

Toilets

- Sanitary fixtures : Somany / Johnson / Cera or equivalent
- C.P. fittings & fixtures: Jaquar / equivalent

Door

- Main Door
- Frame - pinewood / VHD finish
- Shutter - both side laminated flush door
- Bedroom door frame - pinewood/ VHD finish
- Shutter - both side laminated flush door
- Toilet & Balcony Door
- Frame -In natural stone frame/FRP/Waterproofed wooden frame
- Shutter - both side laminated water proof door shutter / FRP door shutter

Windows

- Three track powder coated aluminium windows with mosquito net, safety grills & natural stone window sill

Electrification

- Adequate electrical points
- Modular switches
- PVC insulated ISI fire retardant copper wires
- TV point & telephone point in living and master bedroom

Security and Safety

- Proposed CCTV in campus & common areas
- Proposed WiFi in campus
- Proposed common DTH
- Professionally designed fire fighting systems

Lift

- 8 passenger automatic lifts with SS cabin (Nikon or similar)
- Solar water heater for one bathroom each flat



20+
Years of
Existence

15+
Projects Across
PCMC

1.2 Million
Sq. Ft. Completed
Development





VISION

We strive to address the changing need of customers by being proactive and constantly innovating, improving our designs, product, layout, processes, and procedures so as to deliver higher quality of product with timely possession.

We address environmental safeguards and improvements in all our design and developments for the conservation and development of a greener and safer environment.

The company operates in a transparent manner upholding Ethical, Social and Environment responsibilities by an effective implementation, evaluation and assessment of processes in the applicable legal framework.

LANDMARKS CREATED



1 & 2 BHK
RAVET



1 & 2 BHK
RAVET



Arun Park

1 & 2 BHK
WALHEKARWADI



1, 2 BHK & ROW HOUSES
KANHE PHATA



2 & 3 BHK HOMES
CHINCHWAD

Fusion Park

FLATS & SHOWROOMS
PIMPRI



2, 3, 4 BHK TERRACE FLATS
& TWIN BUNGALOWS



1 & 2 BHK HOMES
SPINE ROAD





Address: ARUN AION, Near Arun BLU, S. No. 97(P),
SB Patil School Road, Near Water Tank, Ravet, Pune

CALL: 7620 300 400 / 8446 500 500

www.arundevelopers.com
sales@arundevelopers.com



WhatsApp on
98609 60403



MAHA-RERA Reg.: No.: P52100018655

<https://maharera.mahaonline.gov.in/>