



PRIDE, REINCARNATED.

As a race, we have forayed into an era that offers us a new sunrise, in which each one of us will want our respective lives to shine only brighter than before. We are looking towards happiness, we are unfurling a new hope, we are waiting for moments that will be a treasure. For times and an era that will shine bright just like we want it to, Hallmark presents a home imagined for a tomorrow we all want to be welcomed by. Presenting Hallmark Vesta, a commune in the most developed zone for homes and families, to live happily ever after.

# COME LIVE HAPPILY EVER AFTER.

The logo for Hallmark Vesta is located in the bottom right corner. It features a stylized red icon of a classical building facade with three columns. To the left of the icon, the word "Hallmark" is written in a small, elegant script. Below the icon, the word "VESTA" is written in a bold, uppercase, sans-serif font.

Hallmark  
VESTA



Anyone who wants a home is looking for a place that cuts down travel, enhances lifestyle experiences, and keeps us at easy distances from every aspect essential to complete and live the everyday life. You will find all of those at Hallmark Vesta. Because this one's strategically located in Pati, a region located off Kollur. Which means, in proximity to the prime destinations of the city's industrial and IT corridor. Moreover, it is in nearness to Financial District and Outer Ring Road. In all, it's in the upcoming and buzzing zone of Hyderabad's realty sector.

WHERE LIFE  
LOOKS A LOT  
BRIGHT.

# CHERISH YOUR HOME FOREVER.



Designed with an eye for contemporary architecture and keeping in mind how the future is likely to evolve, the architects who have masterminded the design of Hallmark Vesta have put thought and mind to ensure that you are besotted by it no end. For the onlookers, it will be a trip to admiration forever, and for the owners it will be a pride and beauty to cherish for a lifetime. One glimpse, and you will be oh-so-pleased.



# VESTA

## GET CHARMED AT EVERY STEP.

If there's something that can replace futuristic, well Hallmark Vesta will surely qualify as a precise description of that. The design of the façade is inspired from various quarters and the inside spaces reflect tastes of those who seek surroundings that are way past what the world offers today. Right from the very entrance arch itself, the pathways that will lead you to your home as every corner will charm you with ease.

Space makes way for everything we design. Space makes way for happiness, space makes way for bonding, space makes way for moments that will become the portraits we will want to dive deep into, when we would want to look back in time. Your home at Hallmark Vesta is designed with ample space, such that you make the most of your togetherness in times that you need them the most. That's because, time is the only thing we lack. What you invest here will payback as dividends of happiness.

EARN THE  
DIVIDEND OF  
HAPPINESS.



Who do we buy a home for? Isn't it for our future, for those we sacrifice everything, for those who are the most important for us, for those whose innocence and laughter we yearn for every dawn and every dusk, for those who we await to come back to everyday. For them - for your children - we have the best places so that while they wait for you to return home after a busy day. True, the play areas they have will only compare to your love.

# PLAY AREAS QUITE LIKE YOUR LOVE.





Not often do you come across residential communities that have planters and open spaces that enable manufacturing of abundant oxygen, naturally. Every time you step out of your home at Hallmark Vesta, you will have beautiful and fragrant walkways you can stroll through - no matter the time of day or mood. On a sunny day, say, you may even take shelter in the cool shades of the plants that will dot the paths here.

TAKE SHELTER  
UNDER  
NATURE'S COOL.



# NEIGHBOURHOOD FOR EVERYONE'S GOOD.



NORTH-FACING | 2 BHK  
Flat No# 03 - 13



EAST-FACING | 2 BHK  
Flat No# 02, 14, 17, 18, 26, 30, 34.



WEST-FACING | 2 BHK  
Flat No# 21, 22, 25, 29, 33, 37.



EAST-FACING 3 BHK  
Flat No# 15, 16, 19.



WEST-FACING 3 BHK  
Flat No# 28, 32, 36.



EAST-FACING 3 BHK  
Flat No# 01, 27, 31, 35.



WEST-FACING 3 BHK  
Flat No# 20, 23, 24.

## LEGEND

- 01 Entrance
- 02 Ramp
- 03 Plaza
- 04 Party Lawn
- 05 Periphery Plantation
- 06 Entrance Court
- 07 Deck
- 08 Elder Court
- 09 Flower Court
- 10 Skating Rink
- 11 Play Court
- 12 OAT
- 13 Seating Court
- 14 Yoga Court
- 15 Outdoor Gym
- 16 Herbal Garden
- 17 Jogging Track
- 18 Fruiting Avenue
- 19 Flowering Avenue



# T Y P I C A L F L O O R P L A N

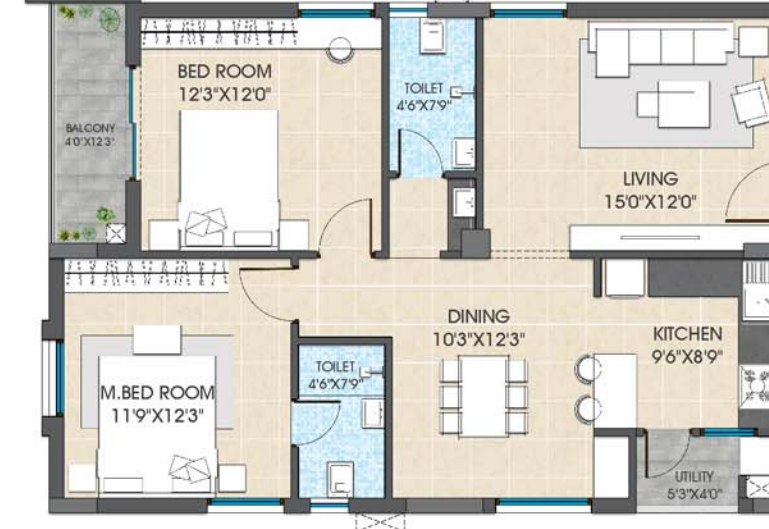
North-Facing  
2 BHK | 1306 Sft  
Flat No# 03, 04, 05, 06, 07, 08, 09, 10, 11, 12.



North-Facing  
2 BHK | 1295 Sft  
Flat No# 13



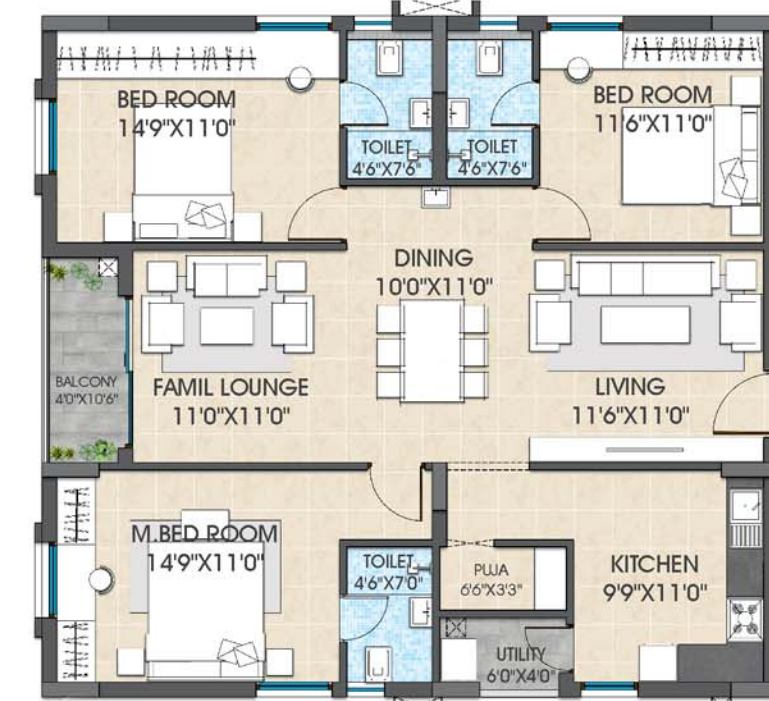
East-Facing  
2 BHK | 1266 Sft  
Flat No# 02, 14, 17, 18, 26, 30, 34.



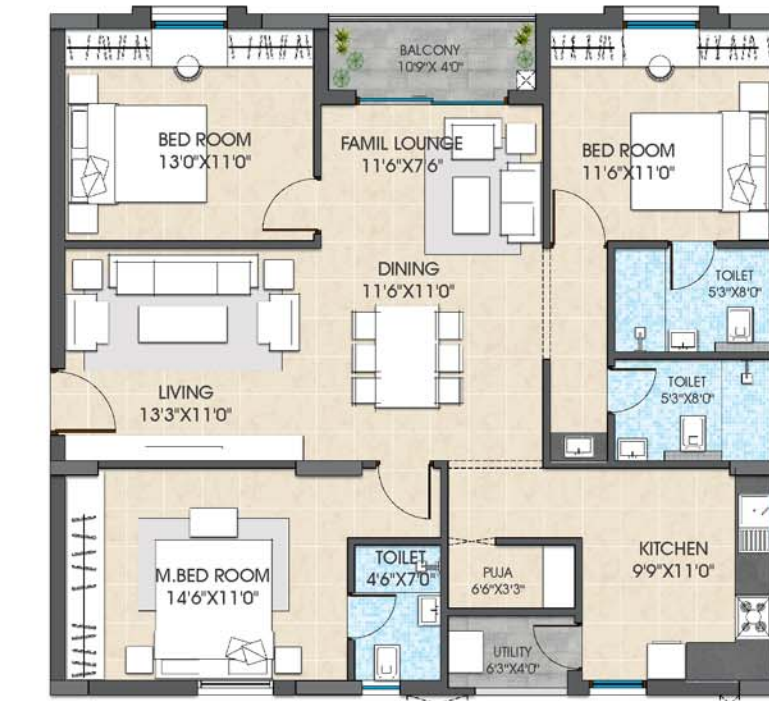
West-Facing  
2 BHK | 1266 Sft  
Flat No# 21, 22, 25, 29, 33, 37.



East-Facing  
3 BHK | 1706 Sft  
Flat No# 15, 16, 19.



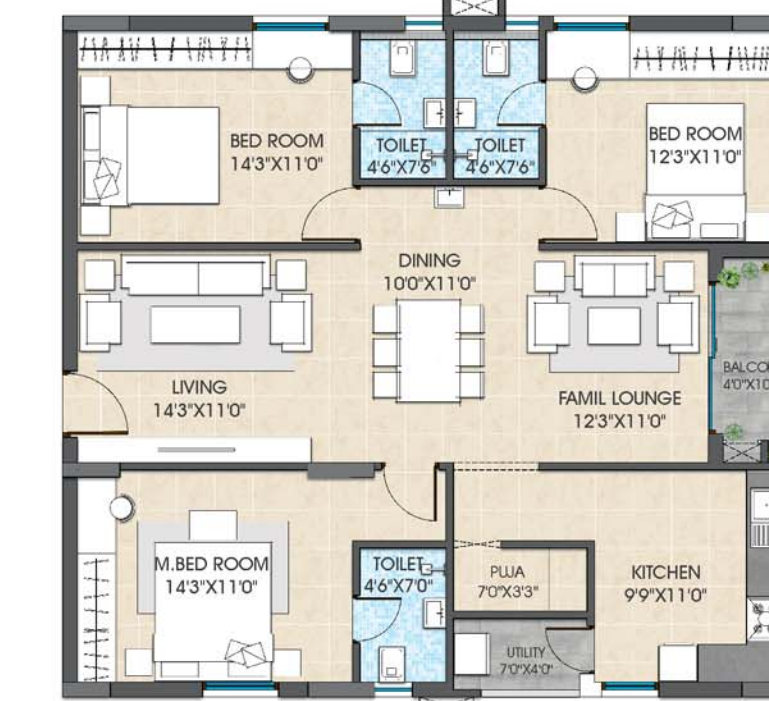
West-Facing  
3 BHK | 1706 Sft  
Flat No# 28, 32, 36.



East-Facing  
3 BHK | 1706 Sft  
Flat No# 01, 27, 31, 35.



West-Facing  
3 BHK | 1706 Sft  
Flat No# 20, 23, 24.



Disclaimer: Tolerance of + / - 2% is possible in the unit areas on account of design and constructions variances.



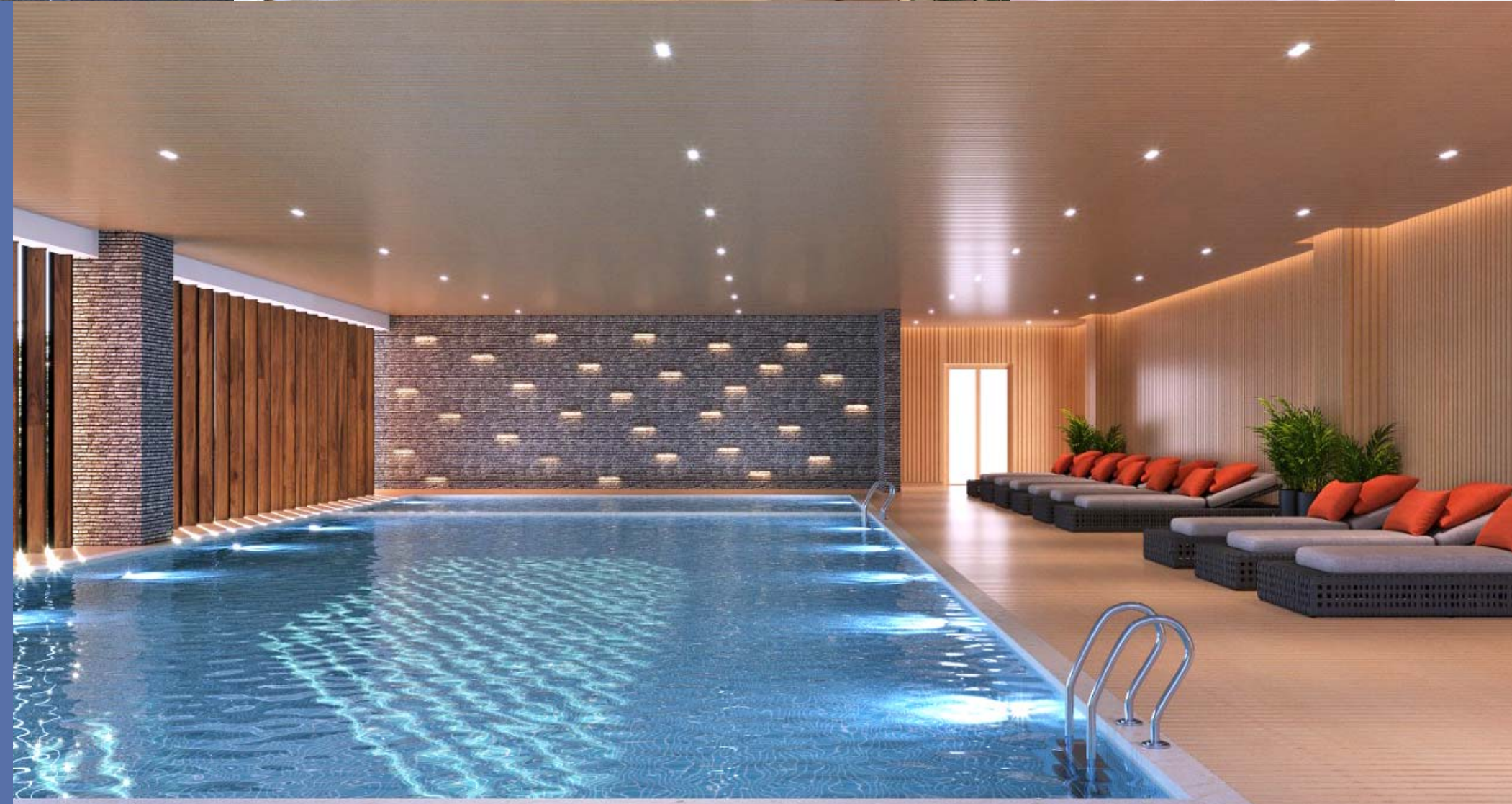
Wide windows that welcome the warmth of the morning sun and the cold of winter breeze, walls lined with mini vegetation that will be both soothing and cooling, elegance-rendering rafters that accentuate the design and architecture - all of these make Hallmark Vesta a marvellous residence that's lavish and stylish, where you have the choice of homes in various sizes for experiences in every size.

DESIGNED  
TO ADD GLORY  
TO BEAUTY.



Hallmark Vesta isn't a place where lifestyle amenities have been planned to just exist or add to mere features, especially when you talk about it with your extended family and friends. But a residence that has features which you can make the most of, and enhance your health, well-being and times you want to refresh or relax. Take to a splash in the swimming pool or look within and realize a lot about life at the meditation zone.

# RECREATION MADE TO BE REAL.



Hallmark has built enough homes to have garnered immense experience and expertise in the use of materials, fixtures and fittings. Over the years, we have learnt and imbibed that nothing beats quality as much as quality itself. We've ensured that every square-foot of your home at Hallmark Vesta should be nothing less than "wow". Says everything about our focus on quality?

# ABOUT QUALITY THAT JOURNEYS WITH YOU.

## STRUCTURE

R.C.C. framed structure to withstand wind and seismic loads

## SUPER STRUCTURE

8" thick Red Brick Blocks for external walls

4" thick Red Brick Blocks for internal walls

INTERNAL: Plastering in CM for walls

EXTERNAL: Plastering in CM for external walls

## DOORS AND WINDOWS

MAIN DOOR: Engineered wood frame and designer shutter with reputed hardware fittings with both sides PU polish finishing

INTERNAL DOORS: Engineered wood frame and designer shutter with reputed hardware fittings

FRENCH DOORS: UPVC door frames with float glass with provision for mosquito mesh

WINDOWS: UPVC windows with provision for mosquito mesh (provision of track for mosquito mesh will be as per window type and feasibility. Mosquito mesh and installation for windows and French doors shall be at extra cost)

## BATHROOMS

- Wall-mounted EWC in all bathrooms
- Wash basins in dining/balcony area, master and children's toilets
- Single lever diverter with shower of reputed make
- All C.P. and sanitary fittings of reputed make
- Provision for geysers and exhaust fans in all bathrooms

## FLOORING

BEDROOMS, LIVING, DRAWING, DINING & KITCHEN:  
Vitrified tiles of reputed make

BALCONIES: Vitrified tiles of reputed make with matt finish

BATHROOMS: Acid-resistant, anti-skid vitrified / ceramic tiles of reputed make

CORRIDORS: Vitrified tiles of reputed make

STAIRCASE: Granite/Tandoor Stone

UTILITIES: Ceramic tiles of reputed make

## PAINTING

INTERNAL: Smooth putty finish with 2 coats of premium acrylic emulsion paint of reputed make over a coat of primer

EXTERNAL: Textured/smooth finish and two coats of exterior emulsion paint of reputed make

## KITCHEN

- Granite platform with stainless steel sink, CP fittings with 2.0" height ceramic tile dado over granite countertop
- Provision for fixing water purifier, exhaust fan and chimney
- Provision for washing machine in the utility area

## ELECTRICAL

- Power outlets for geysers and exhaust fans in all bathrooms
- Power plug for cooking range, chimney, refrigerator, micro wave ovens, mixer / grinders in kitchen
- Distribution boards and MCBs of premium make
- Modular Electrical Switches of premium make
- Power outlets for air-conditioners in all bedrooms

## TELECOM / CABLE TV / INTERNET

- Telephone provision in MBR and drawing area
- Provision for internet connection in each flat
- Provision for cable connection in master bedroom, children's bedroom and living room

## LIFTS

6-passenger automated lift of reputed make, entrance with front granite/tile cladding

## POWER BACK-UP

Power back-up for fans and lights

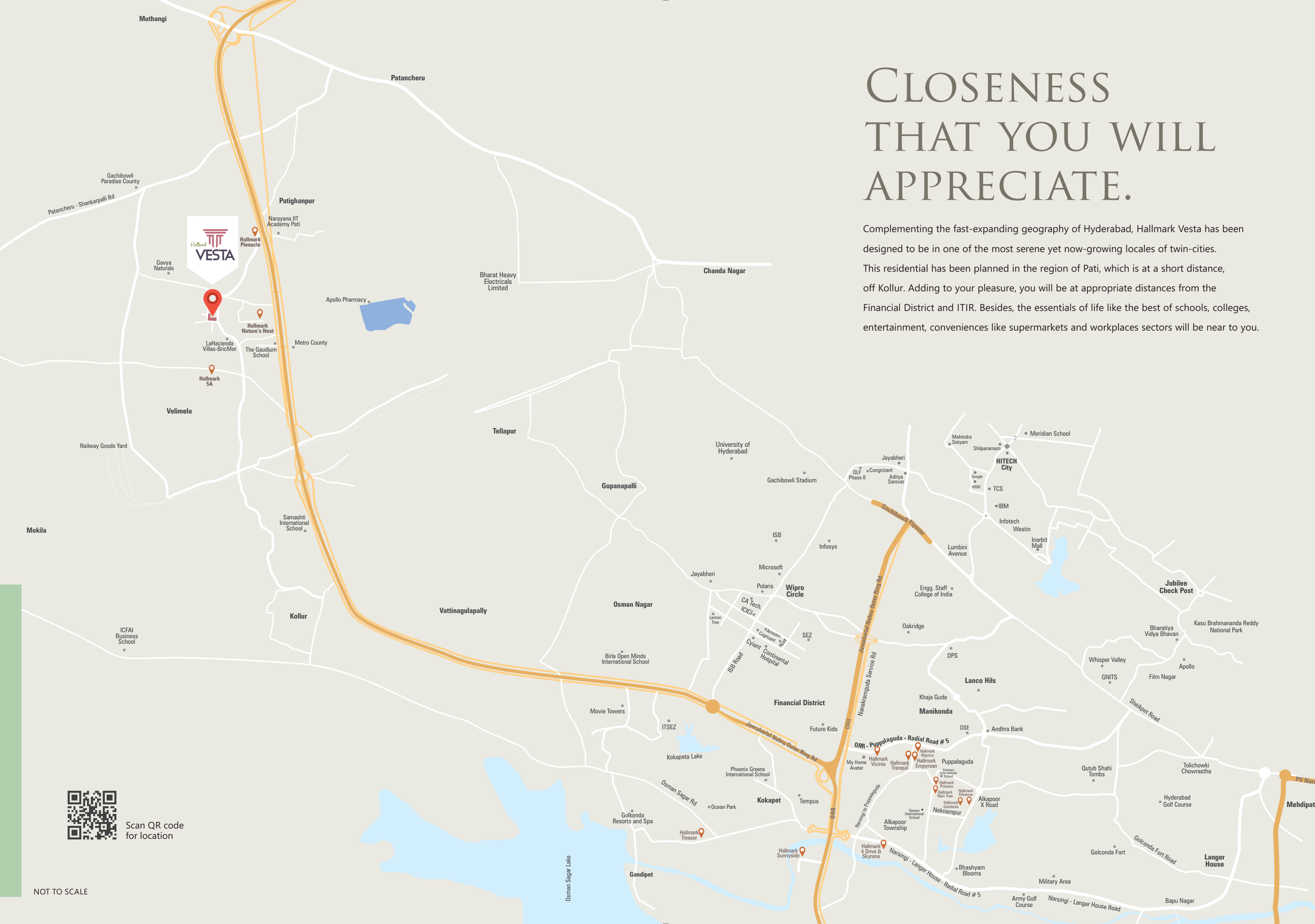
## WTP & STP

Domestic water made available through an exclusive water-softening plant

A sewage treatment plant of adequate capacity as per norms will be provided inside the project, treated sewage water will be used for the landscaping and flushing purpose

# CLOSENESS THAT YOU WILL APPRECIATE.

Complementing the fast-expanding geography of Hyderabad, Hallmark Vesta has been designed to be in one of the most serene yet now-growing locales of twin-cities. This residential has been planned in the region of Pati, which is at a short distance, off Kollur. Adding to your pleasure, you will be at appropriate distances from the Financial District and ITIR. Besides, the essentials of life like the best of schools, colleges, entertainment, conveniences like supermarkets and workplaces sectors will be near to you.



Scan QR code for location

NOT TO SCALE

# WE'VE ADDED OUR HALLMARK EVERYWHERE.

When you explore the south-western geography of Hyderabad, you will discover the several homes that we have built. True, Hallmark Builders has given the fast-growing locales of Kokapet, Puppalguda, Nekkampur and Gandipet some of its most elegant residential landmarks. We are on our way to giving more as we journey into a phase of new hope and new possibilities.



Hallmark  
**tranquil**  
*Live a poem*

158 Luxury Flats  
@ Puppalguda

Hallmark  
**PRIMERa**  
The HUB

84 Luxury Flats  
@ Alkapoor Township



Hallmark  
**Silvanus**  
Love your living

240 Premium Flats  
@ Nekkampur

Hallmark  
**Impyrean**  
Live majestic

245 Premium Flats  
@ Puppalguda



Hallmark  
**VICINIA**  
Create new bonds

441 Luxury Flats  
@ Puppalguda

# IT'S EASY TO FIND US THIS SIDE.

If you are looking to get your belief and trust firm up in Hallmark Builders, you should go on a drive of the ITIR region. When you do that, you will be pleased to discover numerous Hallmark properties. When it comes to decking up the ITIR, Hallmark properties nicely deck up the region. We have created communities that are a delight of owners and residents, and a pride that we always cherish and talk about. Now come over to Hallmark Vesta.



Lavish Gated Villa Residential Project in 47 acres @ Pati close to Kollur exit



G+9 Floors with Premium Luxury Apartments in 5.7 acres @ Manchirevula



Commercial Tower with Retail and Office Spaces on Radial Road # 4 @ Narsingi



G+14 Floors with Premium Sky Villas in 6 acres @ Narsingi on Radial Road # 4



G+29 Premium High-rise Towering Residential Project. Spread over 4.5 acres this mixed-use project hosts well-crafted Sky Villas and a Commercial Tower on 100 Feet Main Road @ Gandipet, off Kokapet



We are always looking to make choices. Choices between what's right and what's good for us. Choices between a little less and slightly more. Choices between budgeting our expenses and going slightly overboard. Buy when it comes to a home, we find many choices in life. At least with Hallmark Vesta, you don't have to make choices. Come choose a residential commune that will impress you and will be the key to all that you want in life.

# GET THE KEY TO AN ASSET OF HAPPINESS.







### Hallmark Builders

5th Floor, Jyothi Imperial, Near Gachibowli Flyover,  
Hyderabad - 32. M: 99050 99999, 8297 887 887.

[www.hallmarkbuilders.in](http://www.hallmarkbuilders.in)

Member



[www.credai.org](http://www.credai.org)

Approved by



**TS RERA REG. NO. P01100002121**

Architects



[form-studios.business.site](http://form-studios.business.site)

Structural



MEP Consultant



[designtreeconsultants.com](http://designtreeconsultants.com)

Landscape



[anjugroup.com](http://anjugroup.com)

Disclaimer: All Rights Reserved. This brochure is not a legal document. This project brochure is indicative of the kind of development that is proposed to be constructed as per the application to RERA. Artist's impressions and stock images are used to illustrate products and features. Furnishing, fixtures, fittings, etc., if any, are shown for reference only and are not part of the standard units. Projects being marketed are in the process of being registered under RERA by Telangana RERA.

