

Sportsville
BY KOHINOOR
SPORTS-CENTRIC HOMES | HINJAWADI



Site Address: Survey No. 47/1/A, Maan, Hinjawadi IT Park Ph.1,
Pune - 411057

Corporate Address: Kohinoor Development Corporation,
A-101/102, ICC Trade Tower, S.B. Road, Pune 411016

Call: 020 - 6721 0403 | www.kohinoorpune.com



MahaRERA No: P52100029650

Available at: <https://maharera.mahaonline.gov.in>

Sportsville
BY KOHINOOR
1, 2 & 3 BHK SPORTS-CENTRIC HOMES
IN HINJAWADI PH.1

**“IT IS IMPORTANT TO UNDERSTAND
THAT IF YOU DO FALL,
IT’S IMPORTANT FOR YOU
TO GET RIGHT BACK UP AGAIN.”**

~ Sachin Ramesh Tendulkar





CLUB ELEVATE

@ SPORTSVILLE

40,000 sq.ft. Sports Arena
with 10+ Exciting Sports

A one-of-its-kind fitness arena in Hinjawadi, Club Elevate is a 40,000 sq.ft. dedicated zone within Sportsville. Featuring a host of sports, fitness activities, wellness avenues and everything related to an active lifestyle, this is your go-to for a fitter future. Kickstart a fitness revolution in the secure premises of your own residential community. And discover the fittest and best version of yourself with every new sunrise.



**CLUB
ELEVATE**

Artistic Impression



Artistic Impression



Image is for representational purpose

SPORTIFY YOUR LIFE!



FEATURED SPORTS

Anjali Bhagwat Shooting Range

- Unique pellet-less shooting for 100% safety
- Laser-based shooting without any projectiles
- Tech-based modified version of shooting

Nandan Bal Tennis Court

ITF Standard Tennis Court (multi-marking court)





Shantanu Sugwekar Cricket Nets

- **Box Cricket with 2 Practice Pitches**

2 teams with 6-8 players per side. Played in an enclosed net-covered turf within a span of one hour.

- **Indoor Cricket Pitch with Bowling Machine**

Used by cricketers to practice their technique. It consists of a cricket pitch enclosed by nets and a bowling machine that allows players to practice independently.



**CLUB
ELEVATE**

Paresh Shivalkar Futsal Arena

FIFA's official indoor soccer game – a scaled down version of outdoor soccer

Played 5 players per side on a smaller field (roughly basket court sized) with a smaller ball

The sport is played with touchline boundaries and helps with control skills and touch



Aditi Mutatkar Badminton Complex

4 Wooden Badminton Courts (Auditorium)



**CLUB
ELEVATE**

Chandrashekhar Gokhale Chess Room

OTHER SPORTS



Swimming Pool and Kids' Pool



Table Tennis Room



Basketball Court (multi-marking court)



Dart Room



Touch Tennis (multi-marking court)
• Modified version of tennis played on a smaller court
• Played with foam balls and shorter racquets

All images are for representational purpose

A WORLD OF FITNESS AND WELLNESS



Joggers' Track



Sports-centric Landscape Podium



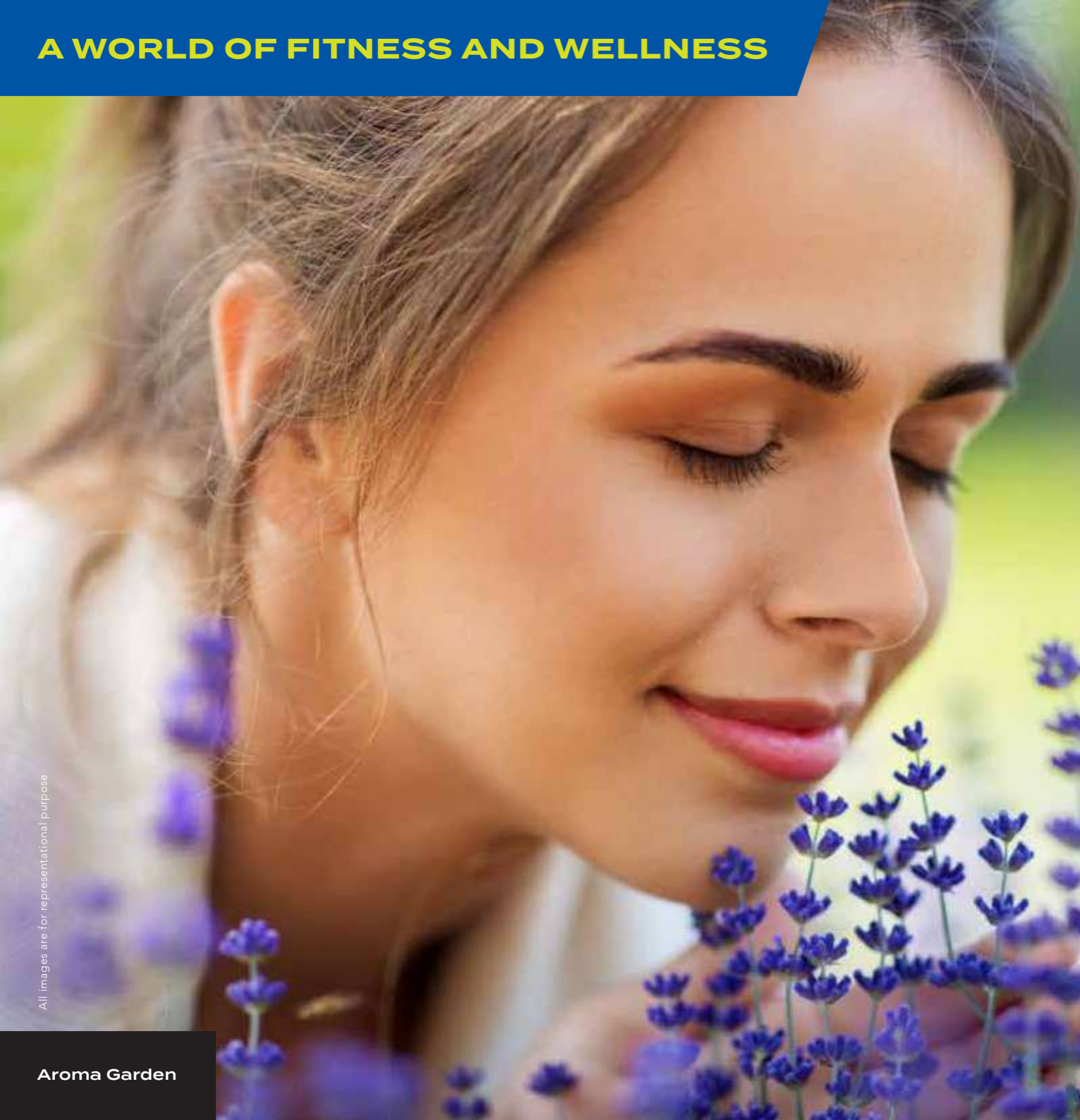
Gym with Steam and Sauna



CrossFit Arena

All images are for representational purpose

A WORLD OF FITNESS AND WELLNESS



All images are for representational purpose

Aroma Garden



Sitting Plaza



Tree Plaza



Herbal Garden

INDULGE IN RECREATION AND ENTERTAINMENT



Indoor Games - Carrom, Billiards, Foosball



Gaming Zone - PlayStation, Xbox



Kids' Zone:
Climbing Wall Holds, Slackline,
Ninja Line, Obstacle Course, Zipline

All images are for representational purpose

INDULGE IN RECREATION AND ENTERTAINMENT



Party Lawn



Pets' Play Zone



Lawn Mound with Sculpture

All images are for representational purpose

TRAIN LIKE A PRO. BE INSPIRED BY THE PROS.

Ever wondered what it takes to be an Olympian or a world-leading champion?

The will to carry the nation on one's shoulders and bring her glory requires an indomitable spirit. Club Elevate at Sportsville recognises and salutes such sportspersons. In their honour, we've dedicated our sports arena to some of India's finest achievers in sports.

We believe that to scale to the top of their game, every Sportsville resident will draw inspiration from these accomplished personalities. And a few may also rise to become legends in their own right. Because life is the ultimate sport, and you are born to win.



Image is for representational purpose.

ANJALI BHAGWAT

SHOOTING RANGE

- Khel Ratna and Arjuna Award Winner
- Won 31 Gold, 23 Silver and 7 Bronze Medals internationally
- World No. 1 in 10m. Air Rifle Shooting (2002)
- Only Indian to win the ISSF Champions Trophy in Air Rifle Men & Women Mixed Event (Munich, 2002)



NANDAN BAL

TENNIS COURT

- Dhyan Chand and Chhatrapati Award Winner
- Coached Indian in Davis Cup and Fed Cup
- Silver Medal Winner at Universiade (1979) and Asian Games (1982)
- Selection Committee Chairman of Indian Tennis Team



PARESH SHIVALKAR

FUTSAL ARENA

- 3-time Captain of Maharashtra Football Team
- Represented Indian Senior National Team
- Head of Youth Development Krida Prabodhini (Youth League and Indian Women's League)
- Selector at Senior Maharashtra Santosh Trophy and Khelo India Youth Games



SHANTANU SUGWEKAR

CRICKET NETS

- Former First-class Cricketer for Maharashtra for 14 years
- Played League Cricket in the UK for 17 years
- Represented the U-19 Indian Cricket Team in Australia
- Former Chairman of Selection Committee Maharashtra U-15, 19 teams
- Former Selector of U-22 and Ranji Trophy Maharashtra Teams
- Coached the Team Pratapgad Warriors in Maharashtra Premier League

CHANDRASHEKHAR GOKHALE

CHESS ROOM

- International Master in Chess
- Shiv Chhatrapati Award Recipient
- Qualified FIDE Trainer
- Official Coach of Team India for Asian Championships



ADITI MUTATKAR

BADMINTON COMPLEX

- Silver Medal Winner - Mixed Team in Commonwealth Games 2010 (New Delhi)
- Previously Ranked No. 27 in the World



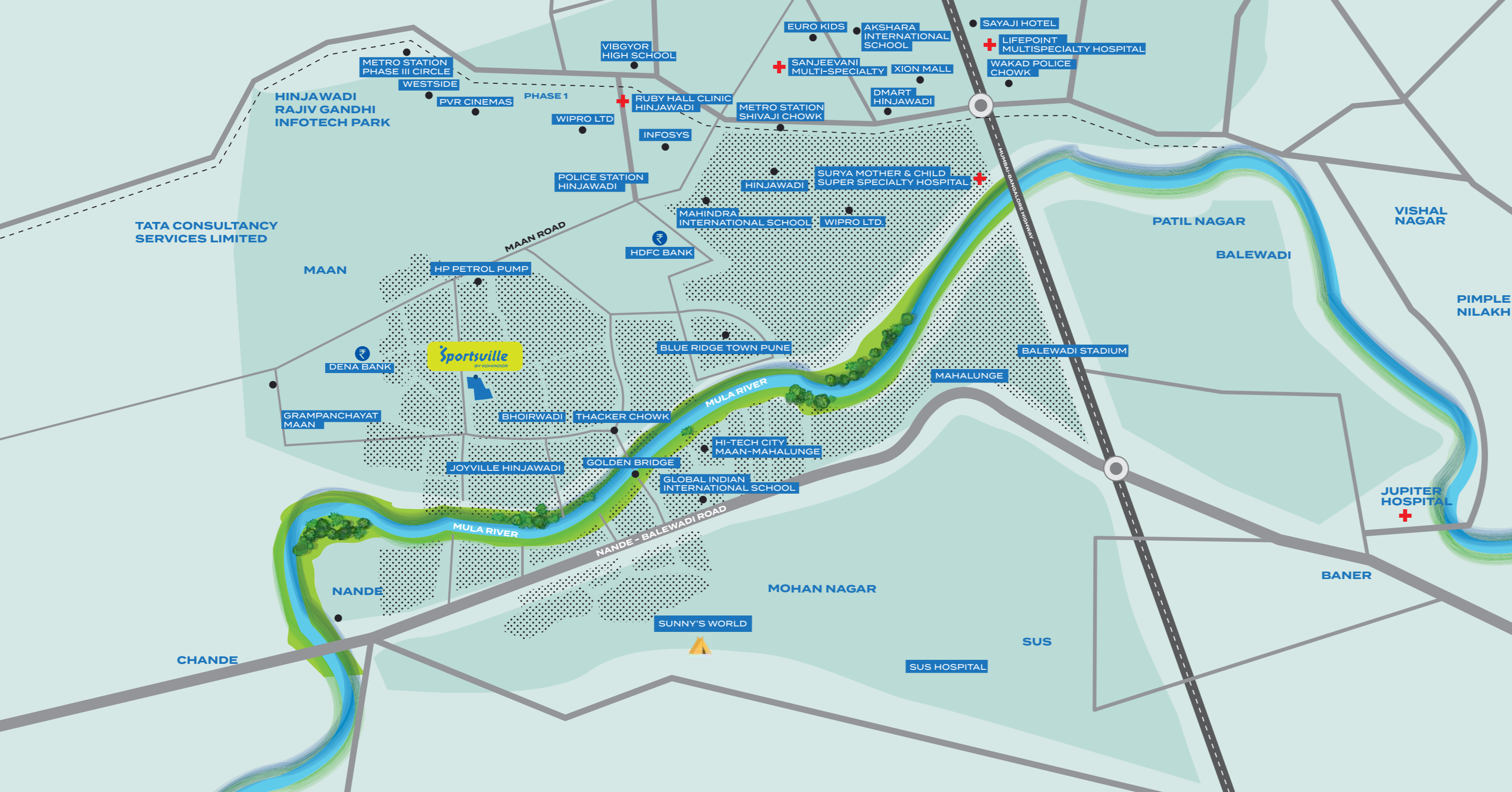
THE PREMIUM RESIDENTIAL ADDRESS OF HINJAWADI

Sportsville in Hinjawadi



Hinjawadi's swanky tech park hosting corporate HQs of multinationals has become synonymous with the high life in Pune West. However, on the residential front there are few projects which reflect the international vibe of the location.

Presenting, Sportsville - a uniquely planned residential community to give every family a slice of the global lifestyle in Pune. Spread over a large well-defined land parcel, the project is primarily focussed on sports. However, the thoughtful planning from inception has ensured that even the tiniest details reflect a premium lifestyle at Sportsville. High-rise towers, branded specifications, modern amenities, multi-tier security, latest construction technologies... the list goes on. Imagine enjoying a premium lifestyle right out of New Jersey, Toronto or Singapore, within the comfort of Pune's cultural cocoon. It's time to take the next big leap with Sportsville.



PIMPLE SAUDAGAR

MAAN THE GREEN BELT OF HINJAWADI

Located adjacent to the Rajiv Gandhi Infotech Park in Hinjawadi, Maan is the perfect confluence of nature and urban living. Arguably the quietest area near Hinjawadi, the location boasts stunning sunsets against the backdrop of its picturesque green hills. Yet, its connectivity is incredibly convenient for everyday needs. MNC workspaces, multispecialty hospitals, international education and even major travelling hubs are all within a short driving distance. Shake hands with the wondrous landscape of the future. Take a drive to Maan.

WORKSPACES

Hinjawadi IT Park (Ph. 1) - 2.2 km.
 Hinjawadi IT Park (Ph. 2) - 4.5 km.
 Hinjawadi IT Park (Ph. 3) - 4.2 km.
 Amar Madhuban Tech Park - 11.5 km.
 Lohia Jain IT Park - 18.6 km.
 Aundh IT Park - 15.8 km.

EDUCATION

Blue Ridge Public School - 3.8 km.
 Vibgyor High School - 4.4 km.
 EuroKids Pre-school - 4.1 km.
 Global Indian International School - 2.7 km.

KEY AREAS

Aundh - 11.7 km.
 Balewadi - 8 km.
 Wakad - 7.6 km.

CONNECTIVITY

Hinjawadi Flyover - 5.8 km.
 Metro Station, Shivaji Chowk - 2.3 km.
 Pune-Mumbai Expressway - 12.9 km.
 Akurdi Railway Station - 13.5 km.
 Pune International Airport - 26.8 km.

HEALTHCARE

Ashwini General Hospital - 2 km.
 Ruby Hall Clinic - 3.2 km.
 Sanjeevani Hospital - 4 km.
 Metro Chemist - 2.2 km.

MASTER LAYOUT





LANDSCAPE SITE PLAN – STILT LEVEL

LEGEND

- A. ENTRANCE GATE CANOPY AND GUARD CABIN
- B. FEATURE WALL WITH DRY LANDSCAPE
- C. 6M WIDE DRIVEWAY
- D. 1.5 WIDE WALKWAY/CYCLE TRACK MARKED BY PAVING BAND E. FEATURE JAALI SCREENING THE SERVICES BLOCKS
- F. PAVING BAND HIGHLIGHTING THE LOBBY ENTRANCES
- G. PROPOSED STAIRCASE CONNECTING THE CLUBHOUSE WITH THE PODIUM AMENITIES
- H. HERBS GARDEN
- I. TREE COVERED SITOUT
- J. PARTY LAWN
- K. 25M LONG SEMI OLYMPIC SIZE SWIIMMING POOL WITH OVERFLOW EDGE
- L. KIDS' POOL
- M. POOL DECK WITH POOL LOUNGERS
- N. CLUBHOUSE ON STILTS WITH MULTIPURPOSE HALL AND GYM
- O. PET PARK
- P. HANGING FERN GARDEN



OPEN SPACE & CLUBHOUSE AREA

LEGEND

- A. CLUB HOUSE ENTRANCE
- B. TREE PLAZA
- C. FEATURE WALL AT ENTRY
- D. LAWN MOUND WITH SCUPTURE
- E. PARTY LAWN
- F. CHANGING ROOMS
- G. SWIMMING POOL
- H. KIDS POOL
- I. POOL DECK
- J. HERBAL GARDEN
- K. SITTING PLAZA
- L. AROMA GARDEN



LANDSCAPE SITE PLAN – PODIUM LEVEL

LEGEND

- A. STAIRS FROM STILT LEVEL CLUBHOUSE
- B. INDOOR AMENITIES (approx. 250sqm)
- C. 2.4M WIDE JOGGING TRACK (200M LONG LOOP)
- D. BOX CRICKET WITH TWO PRACTICE PITCHES. FULL PITCH CRICKET TURF ON TREMIX. EQUIPPED WITH BOWLING MACHINES.
- E. ITF STANDARD TENNIS COURT
- F. FUTSAL COURT
- G. HALF BASKETBALL COURT
- H. KIDS PLAY AREA WITH PLAY EQUIPMENT
- I. MULTIPURPOSE HALL WITH 4 WOODEN BADMINTON COURTS

MAKE EVERY MOMENT EXTRAORDINARY

Sportsville has been envisioned as a forward-thinking project. While the focus of the project bends towards sports, we've paid extra attention that every other amenity is equally amazing. Beginning with a gorgeous entrance to dedicated activity spaces, from environment-friendly amenities to a manicured party lawn, there's something for everyone. Sportsville will open the doors for you to create unique experiences every day.



Artistic Impression

5 Premium Towers

Towers 1 to 4: Stilt + 23 Storeys

Tower 5: Stilt + 20 Storeys

Floor to Floor Height: 3 Metres

Exclusive Grand Entrance

Spectacular Gate

Wide Driveway with Cycling Zone

Clubhouse

Variety of 1, 2 & 3 BHK Homes





THE ALU-FORM ADVANTAGE:

Stronger to Live. Silken to Touch.

From the inception stage, Sportsville has been designed with a futuristic vision. The elegant blend of simplicity and intelligence can be seen in every aspect. By incorporating the world-leading Alu-Form Technology, every tower at Sportsville will be built at a faster speed, with higher safety standards, and world-class quality. The result is a stronger structure that is silken to touch and robust inside out.

Almost every aspect of an apartment is formed using concrete, which removes the need for block or brick work. A complete control over the concrete quality also means enhanced durability for years. Besides optimising material usage, Alu-Form also allows for incorporation of internal electrical fittings and plumbing work with a greater degree of design efficiency.

And as though so many advantages weren't enough, Alu-Form is also kinder to the environment. Due to the elimination of conventional shuttering systems, there is negligible use of wood. As they say, every larger good begins with one tiny but important step.





LOSE YOURSELF IN A LABYRINTH OF GREEN

Kohinoor has always believed in creating residential communities that bring humans closer to nature. For Sportsville, we have curated a specific list of trees and shrubs indigenous to the geography. Spread across the entire 8-acre area of the project at various touch points – entrance plaza, podium landscape, party lawn, clubhouse area, walkways, tree plaza, hanging fern garden, herb garden, aroma garden – every bit of flora will envelop you in a tranquil state of bliss. It's time to befriend nature without taking any extra effort.

GREEN CITIZENS OF SPORTSVILLE:

TREES:

- Cassia Fistula (Bahava)
- Plumeria (Chafa)
- Cordia Sebestena (Bohari)
- Lagerstroemia White (Tamhan)
- Lagerstroemia Flos Reginae (Tamhan)
- Dillenia Indica (Karmal)
- Artocarpus Altilis (Breadfruit)
- Fillicium Decipiens (Fern)

PALMS & SHRUBS:

- Lipstick Palm
- Traveller's Palm
- Fishtail Palm
- Heliconia
- Supari
- Areca Palm
- Agave

PRECISION IS THE KEY TO PERFECTION

Best-in-class Specifications

STRUCTURE

- » RCC framed structure with Alu-Form System
- » AAC block work walls of 125 mm

FLOORING AND TILES

- » 600 x 600 mm Vitrified tiles for the entire apartment
- » Ceramic anti-skid flooring for terraces and toilets
- » 300 x 600 mm ceramic wall tiles in toilets

RAILING

- » SS & glass railing for terrace

WINDOWS & DOORS

- » Three-track anodised aluminium windows with mosquito nets
- » MS grill for living room, bedroom & kitchen windows from inside
- » Main flush door with wooden finish
- » Bedroom flush door with laminate finish with SS hinges
- » Washroom flush door with laminate finish with SS hinges
- » Provision for exhaust fan in toilets and kitchen
- » Digital lock and video door-phone for main door of the flat

LIFTS

- » Automatic elevators

BATHROOMS

- » Concealed plumbing and flush valves
- » CP Fittings, Sanitaryware: Jaquar Florentine Series
- » Hot and cold mixing units in toilets
- » Solar-heated water supply in one bathroom
- » Treated water supply for flushing

ELECTRICALS & CABLES

- » Polycab Wires / Finolex / equivalent make
- » Telephone point in living room & master bedroom
- » Generator backup for lifts and common areas

KITCHEN

- » Black granite platform with kadappa stand with SS sink of Franke / equivalent make
- » Height of kitchen dado above platform - upto 2 ft.

PAINTS

- » Gypsum finished walls and ceiling
- » 2 coats of acrylic premium emulsion paint for internal walls and ceiling
- » External wall with textured paint
- » Satin-finish oil paint for grills

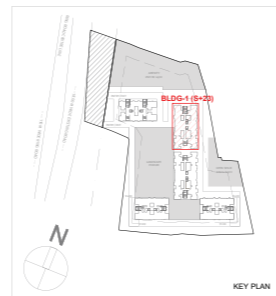
SECURITY

- » CCTV for common areas

FLOOR PLANS



Tower 1
1st and 2nd Floor Plan

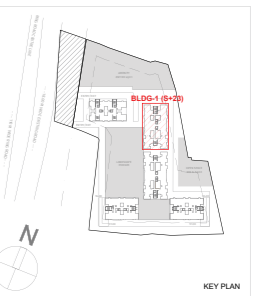


(RERA) SALABLE AREA STATEMENT BLDG-A

Flat Type	Flat No.	Carpet Area		Exclusive Balcony-1 Area		Exclusive Balcony-2 Area		Exclusive Dry Balcony Area		Total Balcony Area		Total Carpet Area (Carpet + Total Balcony)	
		Sqmt.	Sqft.	Sqmt.	Sqft.	Sqmt.	Sqft.	Sqmt.	Sqft.	Sqmt.	Sqft.	Sqmt.	Sqft.
2 BHK -A	101,201												
	102,202												
	103,203	58.63	631.10	3.36	36.16	2.81	30.24	2.52	27.12	8.69	93.50	67.33	724.74
3BHK-A	104,204	74.01	796.60	4.02	43.27	2.81	30.24	2.52	27.12	9.35	100.6	83.36	897.28



Tower 1
3rd Floor Plan



(RERA) SALABLE AREA STATEMENT BLDG-A

Flat Type	Flat No.	Carpet Area		Exclusive Balcony-1 Area		Exclusive Balcony-2 Area		Exclusive Dry Balcony Area		Total Balcony Area		Total Carpet Area (Carpet + Total Balcony)	
		Sqmt.	Sqft.	Sqmt.	Sqft.	Sqmt.	Sqft.	Sqmt.	Sqft.	Sqmt.	Sqft.	Sqmt.	Sqft.
2 BHK -A	301												
	302												
	307												
	308	58.63	631.10	3.36	36.16	2.81	30.24	2.52	27.12	8.69	93.50	67.33	724.74
3BHK-A	304,305	74.01	796.60	4.02	43.27	2.81	30.24	2.52	27.12	9.35	100.6	83.36	897.28

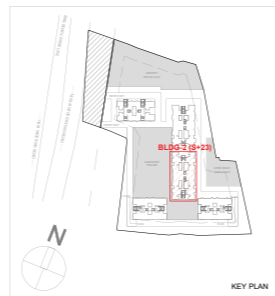


Tower 2
1st and 2nd Floor Plan



(RERA) SALABLE AREA STATEMENT BLDG-A

Flat Type	Flat No.	Carpet Area		Exclusive Balcony-1 Area		Exclusive Balcony-2 Area		Exclusive Dry Balcony Area		Total Balcony Area		Total Carpet Area (Carpet + Total Balcony)	
		Sqmt.	Sqft.	Sqmt.	Sqft.	Sqmt.	Sqft.	Sqmt.	Sqft.	Sqmt.	Sqft.	Sqmt.	Sqft.
2 BHK -A	102,202	58.63	631.10	3.36	36.16	2.81	30.24	2.52	27.12	8.69	93.50	67.33	724.74
	103,203	58.63	631.10	3.36	36.16	2.81	30.24	2.52	27.12	8.69	93.50	67.33	724.74
3BHK-A	101,201	74.01	796.60	4.02	43.27	2.81	30.24	2.52	27.12	9.35	100.6	83.36	897.28
3BHK-C	104,204	73.76	793.95	4.02	43.27	---	---	2.52	27.12	6.54	70.40	80.30	864.35

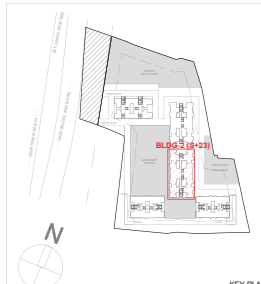


Tower 2
3rd Floor Plan



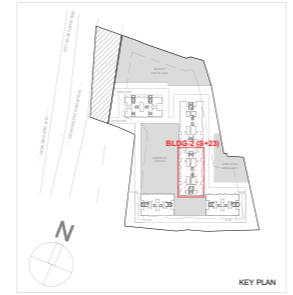
(RERA) SALABLE AREA STATEMENT BLDG-A

Flat Type	Flat No.	Carpet Area		Exclusive Balcony-1 Area		Exclusive Balcony-2 Area		Exclusive Dry Balcony Area		Total Balcony Area		Total Carpet Area (Carpet + Total Balcony)	
		Sqmt.	Sqft.	Sqmt.	Sqft.	Sqmt.	Sqft.	Sqmt.	Sqft.	Sqmt.	Sqft.	Sqmt.	Sqft.
2 BHK -A	302	58.63	631.10	3.36	36.16	2.81	30.24	2.52	27.12	8.69	93.50	67.33	724.74
	303	58.63	631.10	3.36	36.16	2.81	30.24	2.52	27.12	8.69	93.50	67.33	724.74
3BHK-A	301,308	74.01	796.60	4.02	43.27	2.81	30.24	2.52	27.12	9.35	100.6	83.36	897.28
3BHK-C	304	73.76	793.95	4.02	43.27	---	---	2.52	27.12	6.54	70.40	80.30	864.35





Tower 2
4th & 5th Floor Plan

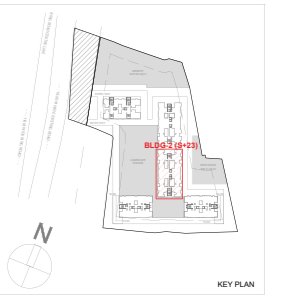


(RERA) SALABLE AREA STATEMENT BLDG-A

Flat Type	Flat No.	Carpet Area		Exclusive Balcony-1 Area		Exclusive Balcony-2 Area		Exclusive Dry Balcony Area		Total Balcony Area		Total Carpet Area (Carpet + Total Balcony)	
		Sqmt.	Sqft.	Sqmt.	Sqft.	Sqmt.	Sqft.	Sqmt.	Sqft.	Sqmt.	Sqft.	Sqmt.	Sqft.
2 BHK -A	402.502												
	403.503												
	406.506												
	407.507	58.63	631.10	3.36	36.16	2.81	30.24	2.52	27.12	8.69	93.50	67.33	724.74
3BHK-A	401.501												
	408.508	74.01	796.60	4.02	43.27	2.81	30.24	2.52	27.12	9.35	100.6	83.36	897.28
3BHK-C	404.504												
	405.505	73.76	793.95	4.02	43.27	- - -	- - -	2.52	27.12	6.54	70.40	80.30	864.35

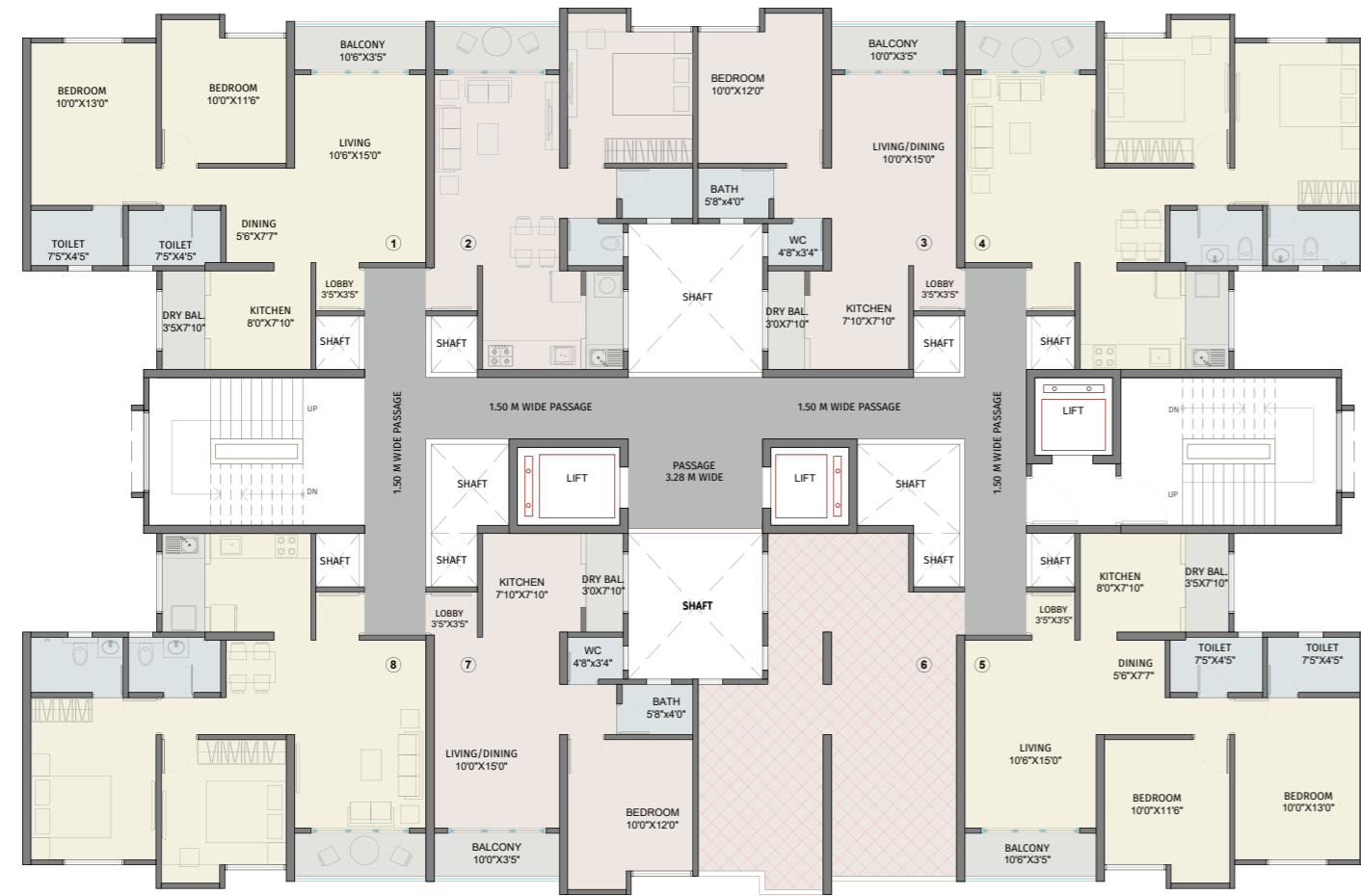


Tower 2
Refuge 7th, 12th, 17th & 22nd Floor Plan

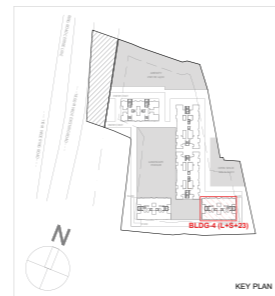


(RERA) SALABLE AREA STATEMENT BLDG-A

Flat Type	Flat No.	Carpet Area		Exclusive Balcony-1 Area		Exclusive Balcony-2 Area		Exclusive Dry Balcony Area		Total Balcony Area		Total Carpet Area (Carpet + Total Balcony)	
		Sqmt.	Sqft.	Sqmt.	Sqft.	Sqmt.	Sqft.	Sqmt.	Sqft.	Sqmt.	Sqft.	Sqmt.	Sqft.
2 BHK -A	702.1202.1702.2202												
	706.1206.1706.2206												
	707.1207.1707.2207	58.63	631.10	3.36	36.16	2.81	30.24	2.52	27.12	8.69	93.50	67.33	724.74
3BHK-A	701.1201.1701.2201												
	708.1208.1708.2208	74.01	796.60	4.02	43.27	2.81	30.24	2.52	27.12	9.35	100.6	83.36	897.28
3BHK-B	704.1204.1704.2204												
	705.1205.1705.2205	74.06	797.18	4.02	43.27	2.75	29.60	2.52	27.12	9.29	99.99	83.35	897.17



Tower 4
Refuge 6th, 11th, 16th & 21st Floor Plan

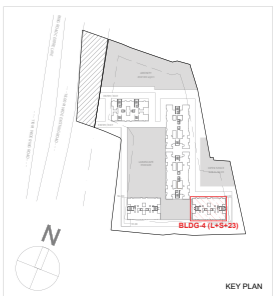


(RERA) SALABLE AREA STATEMENT BLDG-A

Flat Type	Flat No.	Carpet Area		Exclusive Balcony-1 Area		Exclusive Balcony-2 Area		Exclusive Dry Balcony Area		Total Balcony Area		Total Carpet Area (Carpet + Total Balcony)	
		Sqmt.	Sqft.	Sqmt.	Sqft.	Sqmt.	Sqft.	Sqmt.	Sqft.	Sqmt.	Sqft.	Sqmt.	Sqft.
2 BHK -B	601,1101,1601,2101	58.55	630.23	3.36	36.16	---	---	2.52	27.12	5.88	63.29	64.43	693.52
	604,1104,1604,2104												
	605,1105,1605,2105												
	608,1108,1608,2108												
1BHK	602,1102,1602,2102	39.19	421.84	3.20	34.44	---	---	2.16	23.25	5.36	57.69	44.55	479.53
	603,1103,1603,2103												
	607,1107,1607,2107												



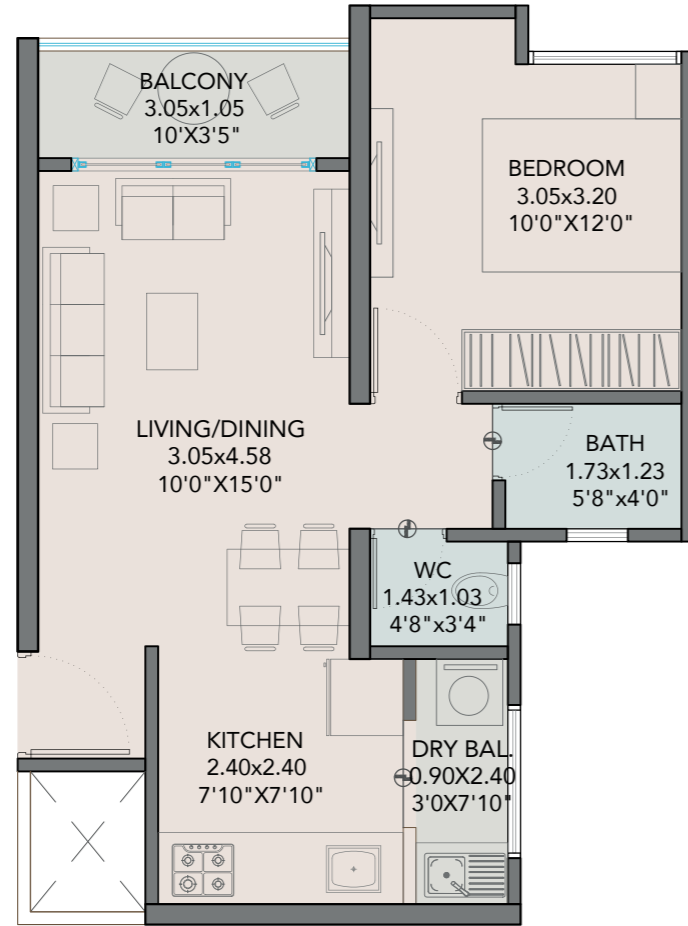
Tower 4
Typical 1st, 2nd, 3rd, 4th, 5th, 7th, 8th, 9th, 10th,
12th, 13th, 14th, 15th, 17th, 18th, 19th, 20th, 22st & 23rd
Floor Plan



(RERA) SALABLE AREA STATEMENT BLDG-A

Flat Type	Flat No.	Carpet Area		Exclusive Balcony-1 Area		Exclusive Balcony-2 Area		Exclusive Dry Balcony Area		Total Balcony Area		Total Carpet Area (Carpet + Total Balcony)	
		Sqmt.	Sqft.	Sqmt.	Sqft.	Sqmt.	Sqft.	Sqmt.	Sqft.	Sqmt.	Sqft.	Sqmt.	Sqft.
2 BHK -B	101-501,701-1001,1201-1501,1701-2001,2201,2301	58.55	630.23	3.36	36.16	---	---	2.52	27.12	5.88	63.29	64.43	693.52
	104-504,704-1004,1204-1504,1704-2004,2204,2304												
	105-505,705-1005,1205-1505,1705-2005,2205,2305												
	108-508,708-1008,1208-1508,1708-2008,2208,2308												
1BHK	102-502,702-1002,1202-1502,1702-2002,2202,2302	39.19	421.84	3.20	34.44	---	---	2.16	23.25	5.36	57.69	44.55	479.53
	103-503,703-1003,1203-1503,1703-2003,2203,2303												
	106-506,706-1006,1206-1506,1706-2006,2206,2306												
	107-507,707-1007,1207-1507,1707-2007,2207,2307												

UNIT PLANS



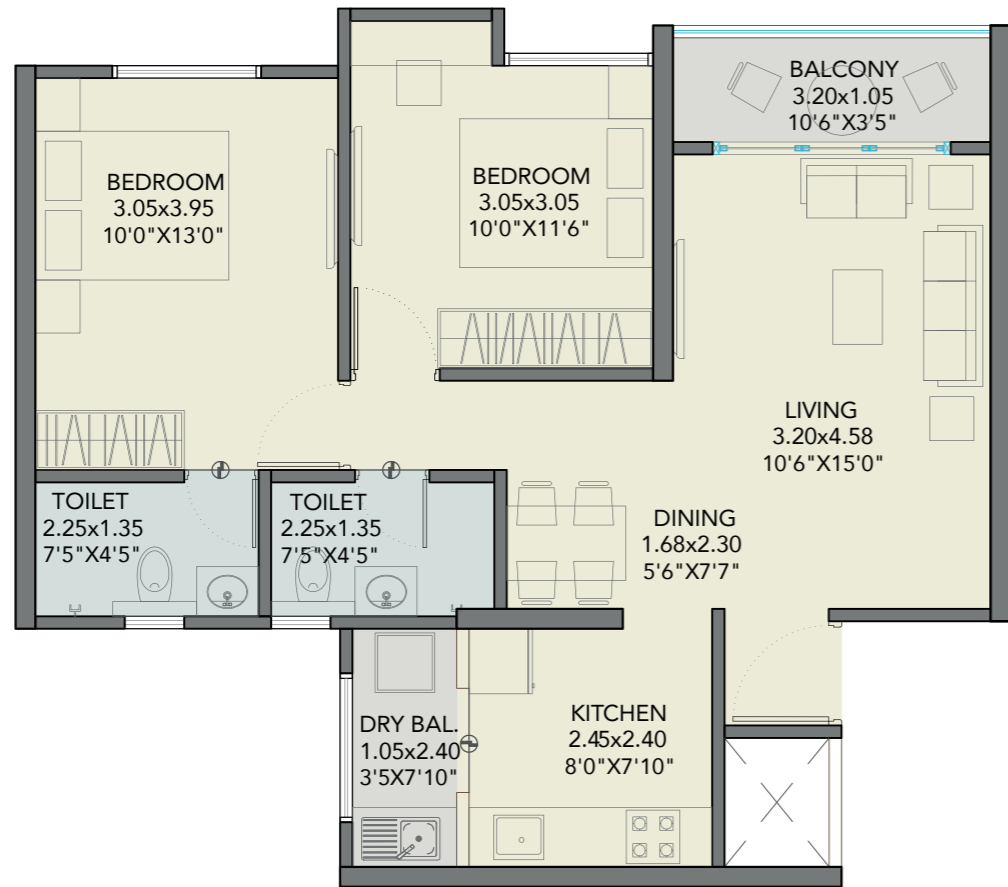
TYPE	CARPET AREA		BALCONY AREA		TOTAL AREA	
	Sqmt.	Sqft.	Sqmt.	Sqft.	Sqmt.	Sqft.
1BHK	39.19	421.84	5.36	57.69	44.55	479.53

1 BHK



TYPE	CARPET AREA		BALCONY AREA		TOTAL AREA	
	Sqmt.	Sqft.	Sqmt.	Sqft.	Sqmt.	Sqft.
2BHK A	58.63	631.10	8.69	93.50	67.33	724.74

2 BHK A



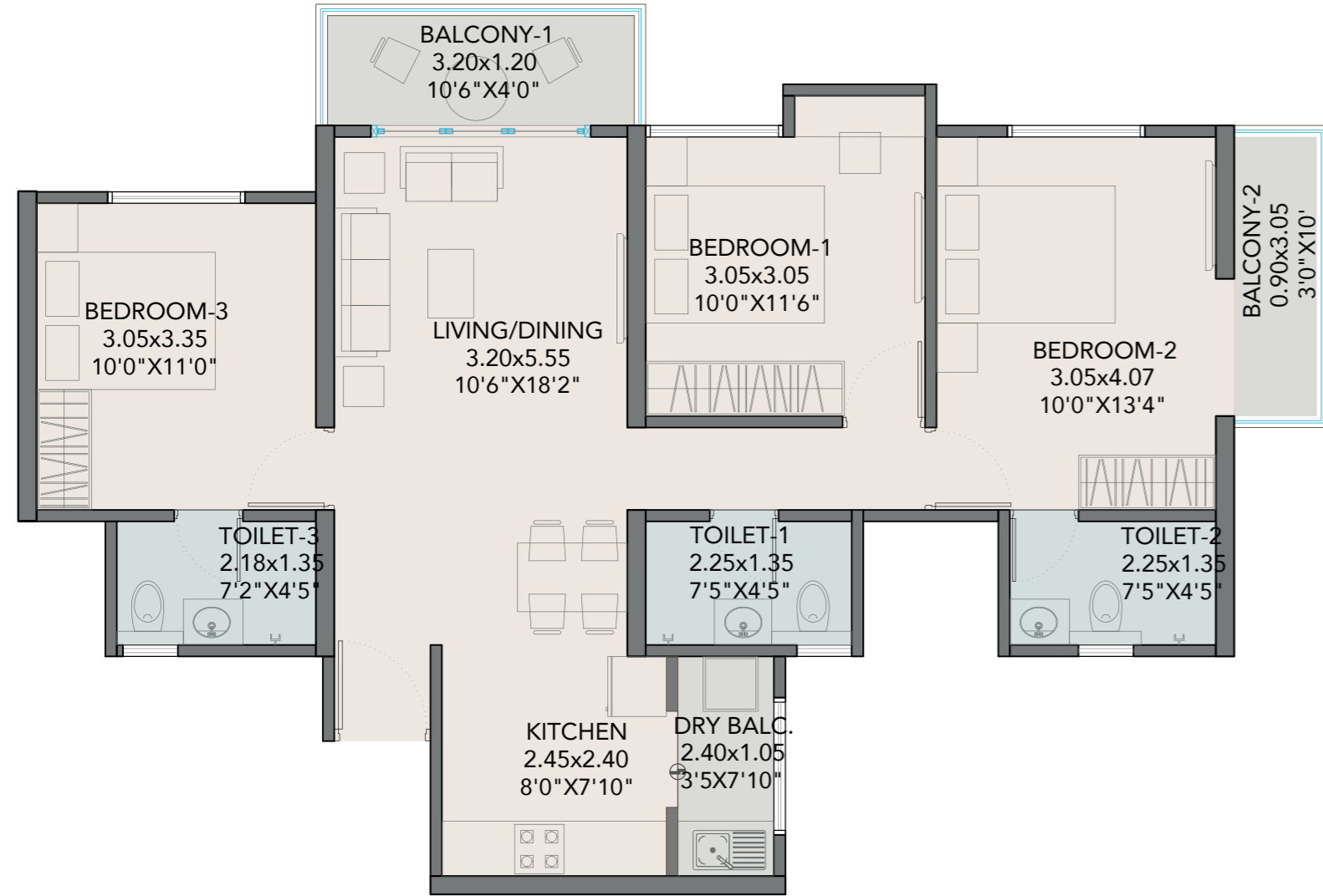
TYPE	CARPET AREA		BALCONY AREA		TOTAL AREA	
	Sqmt.	Sqft.	Sqmt.	Sqft.	Sqmt.	Sqft.
2BHK B	58.55	630.23	5.88	63.29	64.43	693.52

2 BHK B



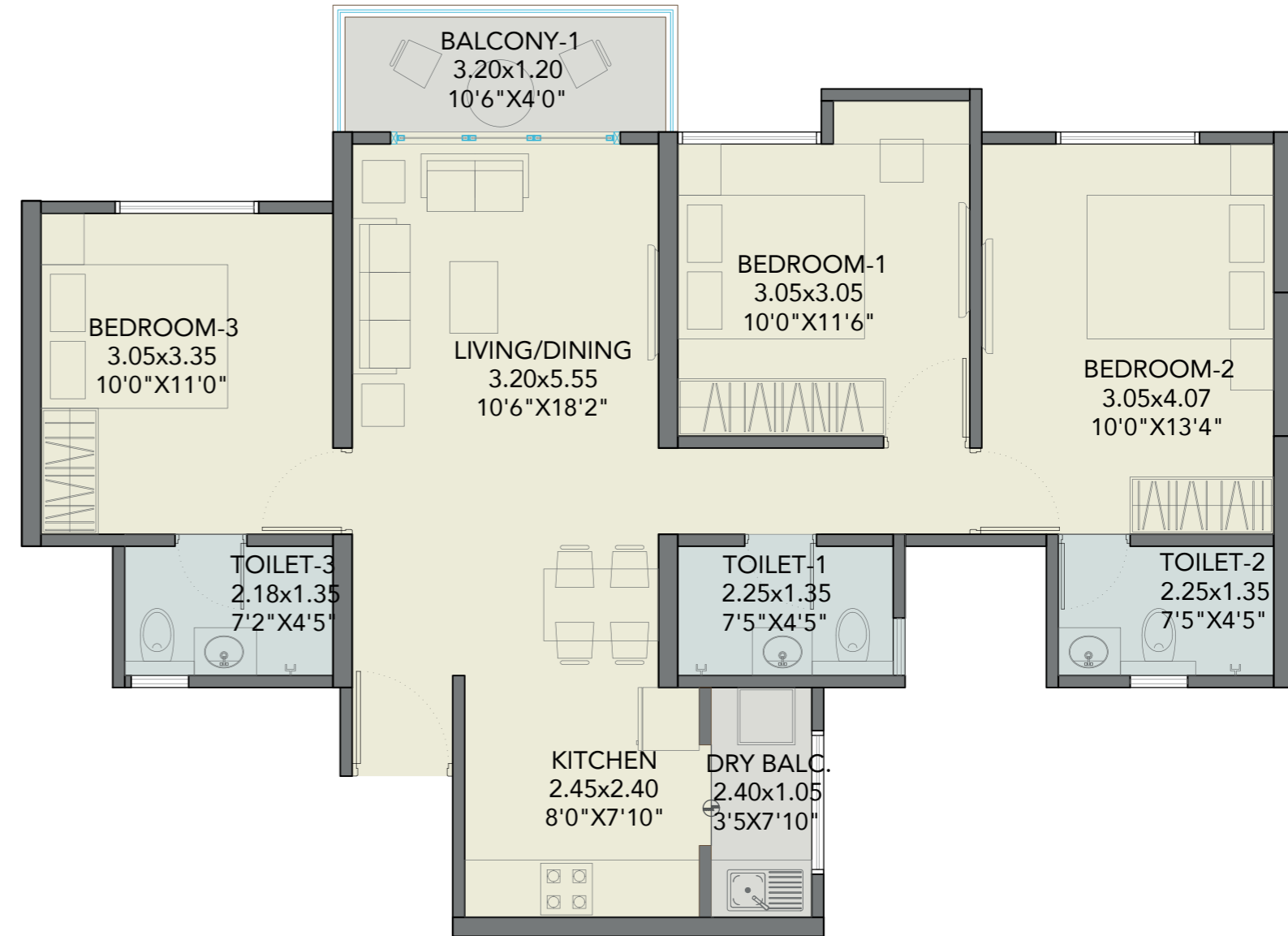
TYPE	CARPET AREA		BALCONY AREA		TOTAL AREA	
	Sqmt.	Sqft.	Sqmt.	Sqft.	Sqmt.	Sqft.
3BHK-A	74.01	796.60	9.35	100.6	83.36	897.28

3 BHK A



TYPE	CARPET AREA		BALCONY AREA		TOTAL AREA	
	Sqmt.	Sqft.	Sqmt.	Sqft.	Sqmt.	Sqft.
3BHK-B	74.06	797.18	9.29	99.99	83.35	897.17

3 BHK B



TYPE	CARPET AREA		BALCONY AREA		TOTAL AREA	
	Sqmt.	Sqft.	Sqmt.	Sqft.	Sqmt.	Sqft.
3BHK-C	73.76	793.95	6.54	70.40	80.30	864.35

3 BHK C

THE 5 SOLID PILLARS OF 'SADA SUKHI RAHO'

The eternal blessing of 'Sada Sukhi Raho' has been at the core of everything that we undertake. Because each brick that we lay and every square foot we build, makes us responsible towards our residents, partners, and society at large.

Which is why our residential projects come with 5 key pillars that ensure a happier tomorrow for everyone. We pride ourselves on creating so many smiles and we owe you a happy ever after, beginning from the first site visit to final possession of your home, and even after that.



Branded
Homes



Secure
Living



Sustainable
Living



Maintenance
Team



Healthy
Lifestyles

THE 'SADA SUKHI RAHO' TEAM

Our Sada Sukhi Raho philosophy is an amalgamation of a deep understanding of customer pain-points and years of creating delightful experiences. We have a dedicated 25-member post-sales customer satisfaction team which helps customers solve any query or problem related to a Kohinoor property. Armed with the robust back-end of a call centre and a ticketing system against every query, we've resolved numerous concerns for customers across all residential and commercial projects - even months after getting final possession. In short, Sada Sukhi Raho is not a tagline; it's a mantra that we live by, so that you get a peaceful and secure happy ever after for life.





THE PULSE OF PUNE'S HAPPIEST FAMILIES

As a homebuyer you always seek a brand that delivers what it promises. Since inception, Kohinoor has always believed that there will be two distinct types of residential projects in Pune - Regular Homes and Kohinoor Homes. A Kohinoor home by definition will offer residences that are beyond compare in quality, design and value. Which means, you can expect everything to be of best-in-its-class quality in a Kohinoor home. Choose one today; build a Sada Sukhi future for generations.

KOHINOOR'S RESIDENTIAL PROJECTS

SQ.FT. CONSTRUCTED TILL NOW - **7 MILLION SQ.FT.** | SQ.FT. UNDER CONSTRUCTION - **4.5 MILLION SQ.FT.**

COMPLETED PROJECTS:

- Kohinoor Shangrila - Phase 1, Pimpri
 - Kohinoor Falcon, Pashan-Sus Road
 - S3 Lifestyle, Pimple Saudagar
 - Saheel Elegance, Pimpri
 - Kohinoor Abhimaan Township 1, Shirgaon
 - Kohinoor Nano Homes, Ravet
 - Shubhashree, Akurdi
 - Air Castle, Ravet
 - Kohinoor Sapphire 1, Tathawade
- Kohinoor Vyona, Pimpri
 - Kohinoor Corner, Bopodi
 - Princess Villa, Bhosari
 - Shubhashree Phase 3, Akurdi
 - Kohinoor Tower, Pimpri
 - Kohinoor Classy Marvel, Bopodi
 - Saheel Fortune Park, Moshi
 - Saheel Calysta, Wakad
 - Tinsel Town, Hinjawadi Phase 2
- Kohinoor Latis, Talegaon
 - Kohinoor High Point, Model Colony
 - Saheel Residency, Thergaon
 - Kohinoor Reina, Kondhwa
 - Kohinoor Grandeur, Ravet
 - Kohinoor Tinsel County, Hinjawadi
 - Vineet Residency, Akurdi
 - Shubhashree Woods, Pimple Saudagar

UNDER CONSTRUCTION PROJECTS:

- Kohinoor Coral, Hinjawadi Phase 3
 - Presidentia by Kohinoor, B.T. Kawade Rd.
 - Kohinoor Sapphire 2, Tathawade
 - Kohinoor Viva City, Dhanori
- Kohinoor Jeeva, Bibvewadi
 - Sportsville by Kohinoor, Maan, Hinjawadi Ph 1
 - Kohinoor Grandeur - Tower D, Ravet
 - Kohinoor Courtyard One - Wakad
- Kohinoor Emerald, Sus
 - Kohinoor Abhimaan Township 2, Shirgaon
 - Kohinoor Shangrila - Phase 2, Pimpri
 - Kohinoor Sapphire 3 - Tathawade

*Data as of February 2022