

Jaipuria's
Sunrise *Greens*

Indirapuram, east of Delhi

Live your dream



floor
plans



live your dream every moment

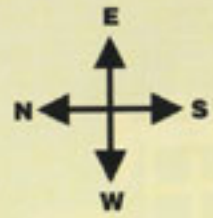
- ✦ Choice of 2/3/4 premium apartments and penthouses.
- ✦ Premium specifications - Laminated wooden flooring in all bedrooms and vitrified tile flooring in drawing & dining rooms.
- ✦ Exclusive club with swimming pool, restaurant, banquet, steam, sauna & gym
- ✦ Lifestyle amenities including Basketball and Badminton Courts, Jogging Track and a Children's play area.
- ✦ RO (reverse osmosis) water treatment plant in every apartment.
- ✦ Three tier security
- ✦ Camera monitoring and door phone system, intercom connectivity with EPABX facility shall be provided in every apartment
- ✦ Power backup
- ✦ Ample dedicated parking space.

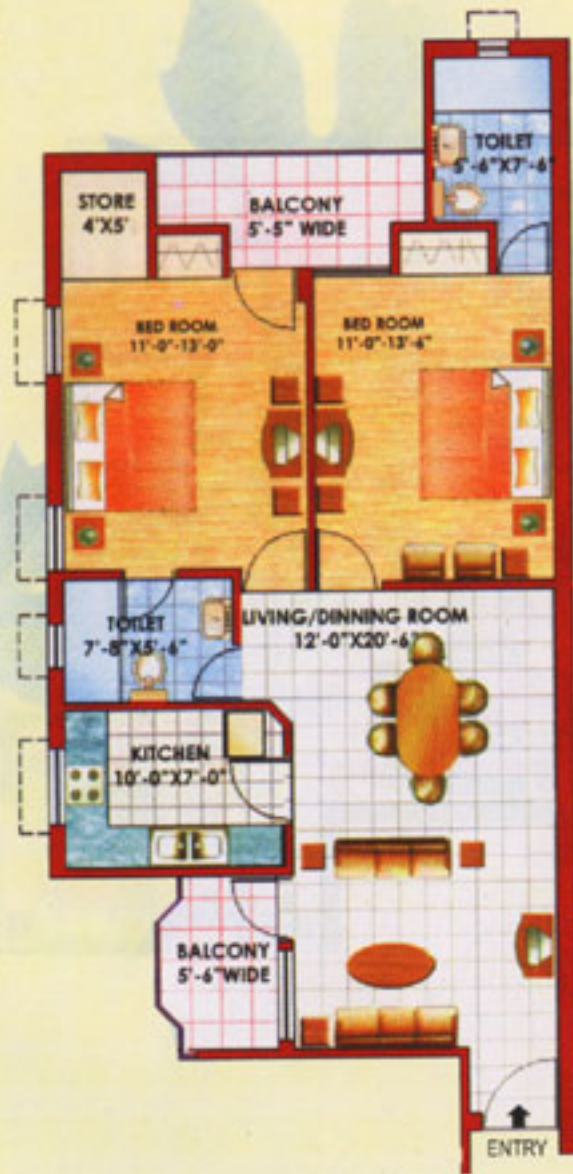
with 3.5 acres of
central landscaped garden and 74% open area



site plan

(Blocks A to P)

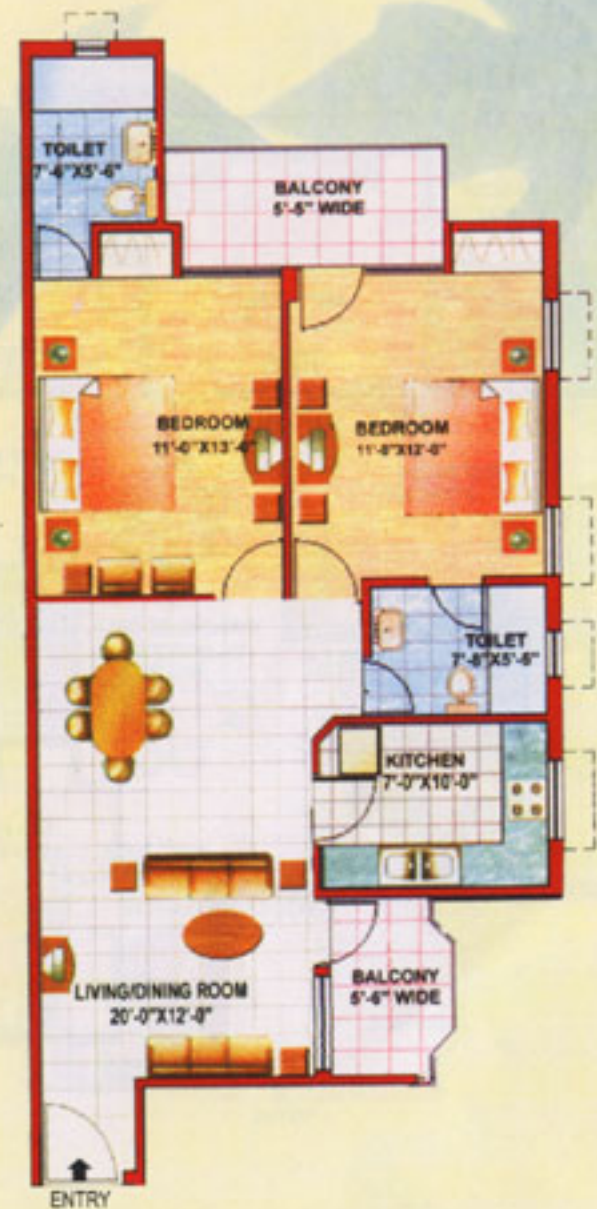




type 1

2 bedroom

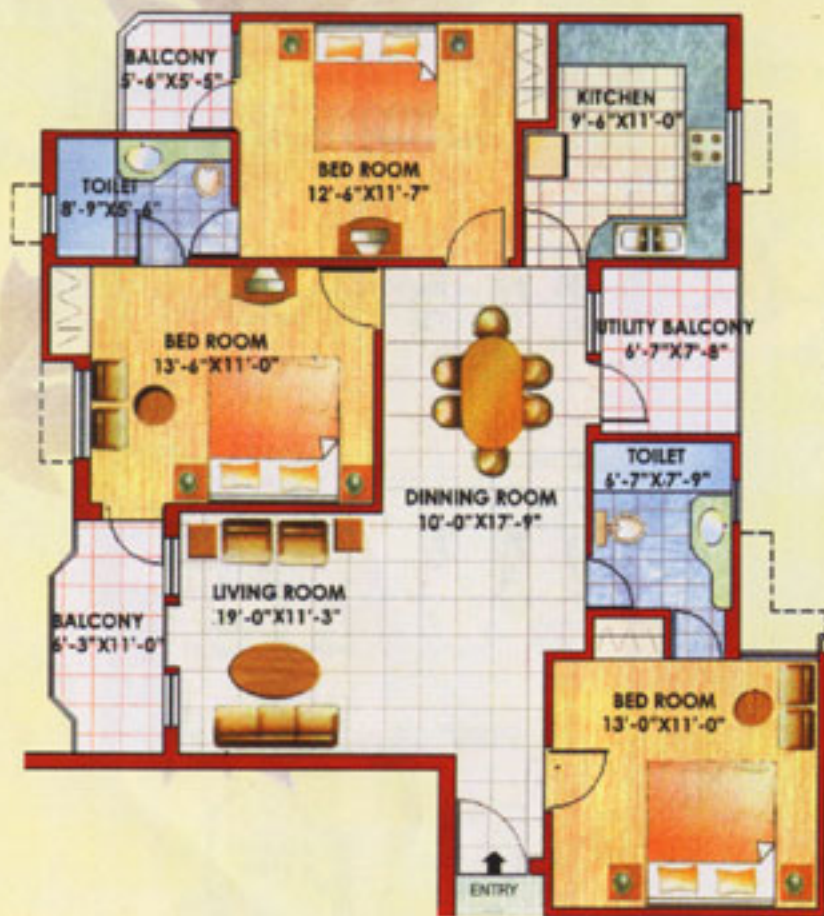
Super Area: 1198 Sq. Ft.



type 1A

2 bedroom

Super Area: 1125 Sq. Ft.



type 2

3 bedroom

Super Area: 1593 Sq. Ft.



type 3

3 bedroom

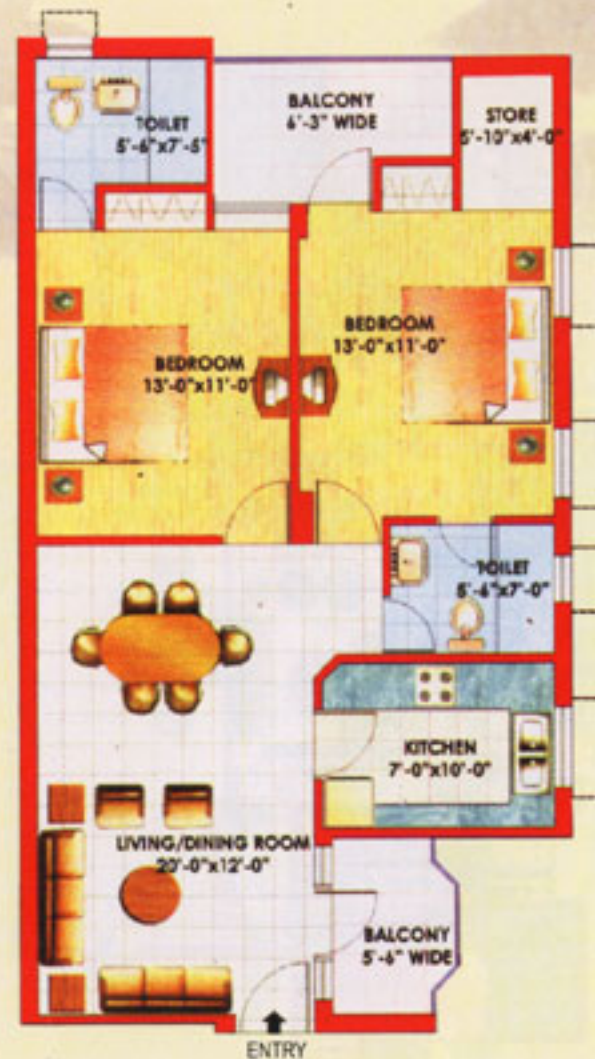
Super Area: 1699 Sq. Ft.



type 4

3 bedroom

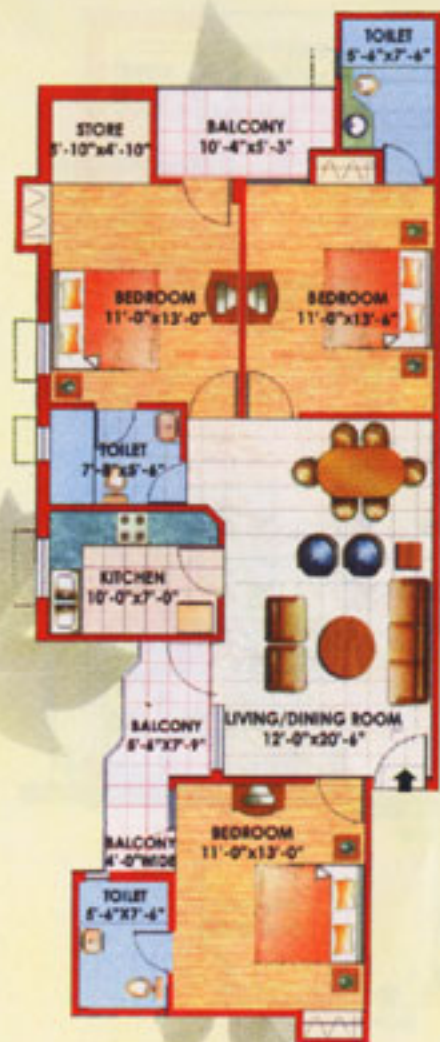
Super Area: 1777 Sq. Ft.



type 5

2 bedroom

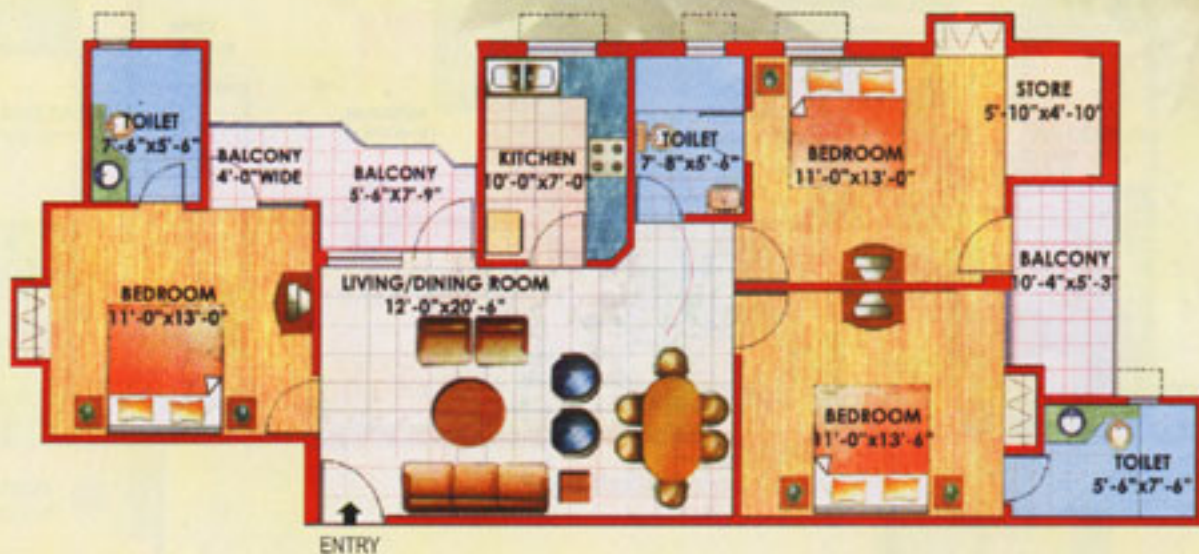
Super Area: 1203 Sq. Ft.



type 6A

3 bedroom

Super Area: 1504 Sq. Ft.



type 6B

3 bedroom

Super Area: 1505 Sq. Ft.



type 7

2 bedroom

Super Area: 1282 Sq. Ft.



type 8

3 bedroom

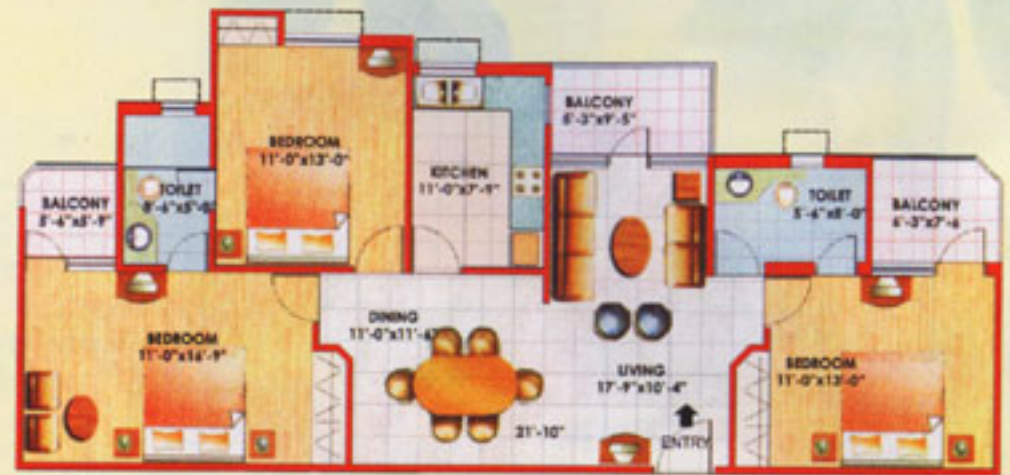
Super Area: 1709 Sq. Ft.



type 9

2 bedroom

Super Area: 1359 Sq. Ft.



type 10

3 bedroom

Super Area: 1553 Sq. Ft.



type 11

3 bedroom

Super Area: 1809 Sq. Ft.



type 12

3 bedroom

Super Area: 1867 Sq. Ft.



premium specifications

Flooring	Vitrified tiles in drawing/dining. Laminated wooden flooring in all bedrooms. Ceramic tiles in kitchen, toilets and balconies.
Doors & Windows	Decorative panel doors from Masonite or equivalent. Composite aluminium door and window frames. Certain windows with grills and fly mesh.
Kitchen	Granite top working platform. Double bowl stainless steel sink. Ceramic glazed tiles dado 2' above working platform. Kitchen shelves. (W/o Wood Work)
Toilets	Ceramic floor tiles, ceramic tiles upto 7' on walls. English WC. Provision of hot and cold water system (w/o geyser). Good quality CP fittings.
Inside wall finish	Inside walls in oil bound distemper. POP cornice in drawing/dining and all bedrooms.
External facade	Exterior in superior maintenance-free finish.
Electrical	Copper wiring in concealed PVC conduits. Sufficient light and power points. Provision for T.V. and telephone point in living room and all bedrooms.
Super structure	Earthquake-resistant RCC frame structure. Brick work in cement mortar.

This booklet is purely conceptual and not a legal offering. Further, in the interest of maintaining high standards, the Company / architect reserved the right to modify any details / specification / feature shown and presented here. Further, marble and other natural stones are subject to natural variations in texture and colour. All areas & plans in this brochure are subject to change. 10.764 sq.ft = 1 sq.mtr = 1.196 sq. yards and 3.28 ft=1 mtr. All dimensions shown in feet-inches are close approximations to metric dimensions.

Location perfectly placed

- Off the Delhi-Lucknow NH 24, Proposed to be made an 8 lane intersection-free zone between Nizamuddin Bridge & Hapur.
- Bang across the prestigious Noida Electronic City.
- 25 Min Drive from Connaught Place.
- A Railway Station coming up in Anand Vihar about 3 kms from Indirapuram.
- The Metro Rail to reach upto Anand Vihar Bus Terminal & Indirapuram.
- Commonwealth Village being set up only six kms from Indirapuram.
- Prestigious schools like The DPS, Cambridge, Bharatiya Vidhya Bhawan, St. Francis, St. Thomas and Indus Valley close by.
- Very close to the world-class Ranbaxy Fortis Superspeciality Hospital.
- Swarn Jayanti Park spread over 16 acres with extensive green areas, water bodies and sports facilities already functional.
- Several Multiplexes, Shopping malls and Entertainment zones existing and coming up in and around Indirapuram.



Jaipuria Group - a Century of Excellence

Jaipuria Group is a Rs. 1200 cr. multi-faceted organisation with diverse business interests in Foods & Beverages, Textiles, Information Technology, Education and Real Estate. With over a hundred years of experience, the Group has always believed in building long-term partnerships with its business associates and a diligent devotion to quality.

The Group is today a leading bottler for beverage major **Pepsi** enjoying over 60% of the market share. It is also the franchisee of **Pizza Hut's** Indian operations. The Group's partnership with **Raymond** dates back to 1940, being its sole selling agent for Northern India.

In the field of education, the Group holds the franchise of the renowned **Delhi Public School** for the cities of Gurgaon and Jaipur providing modern infrastructure and international standard classroom facilities.

In the Information Technology, the Group has a major presence in both the hardware and software segments a joint venture with **leo systems Inc.**, **Jaipuria Leo Software Systems**, a joint venture with **Leo systems Inc.**, Taiwan is dedicated to providing hardware and networking solutions.

Having successfully completed several prestigious projects like the **Jaipuria Plaza** - a 60,000 sq. ft. commercial complex in Noida, **Jaipuria Enclave** in Kaushambi, Ghaziabad, **Park View City** on Gurgaon-Sohna Road and **Jaipuria's Shopping Arcade** in Nagpur, the Group is now proud to bring to you **Jaipuria's Sunrise Greens** and **Jaipuria's Sunrise Plaza**, a development of over 18 lac sq. ft. of premium residential and commercial projects in Indirapuram.

Today, the Group is widely regarded for its rich values, integrity and sound business ethics. An ISO 9001:2000 certified company, the Group is on the fast track of achieving higher levels of growth and customer satisfaction.





Jaipuria's
Sunrise *Greens*
Indrapuram, east of Delhi
Live your dream

Jaipuria Infrastructure Developers Pvt. Ltd.

9-B, Hansalaya, 15 Barakhamba Road, New Delhi - 110001

Tel : 011-23711317 / 18 Telefax : 23711319

Site Sales Office : Plot No. 12 A, Ahinsa Khand, Indrapuram, Ghaziabad.

Tel : 95120-2652620, 2652621, 3247246 Telefax : 95120-2651213

Email : enquiry@jaipuria-group.com

Visit us at : www.jaipuria-group.com



An ISO 9001:2000
Certified Company