



Experience  
Convenient Lifestyle



### **1 BHK & 2 BHK Convenient Homes**

Life at Satyam Shivam is pampered with convenience for a comfortable living which is blessed with hand-picked amenities. Come experience a convenient lifestyle.



Peep Down On Shivam 

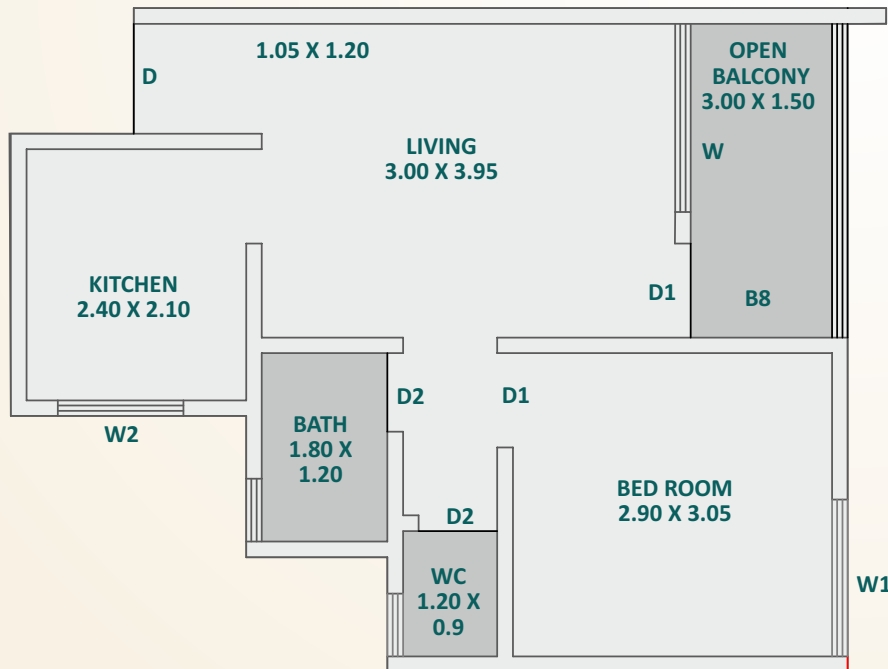


Welcome To A Convenient Lifestyle 

# Planned For Convenience

## 1 BHK Convenient Homes

B and C wing  
101 / 201 / 301 / 401

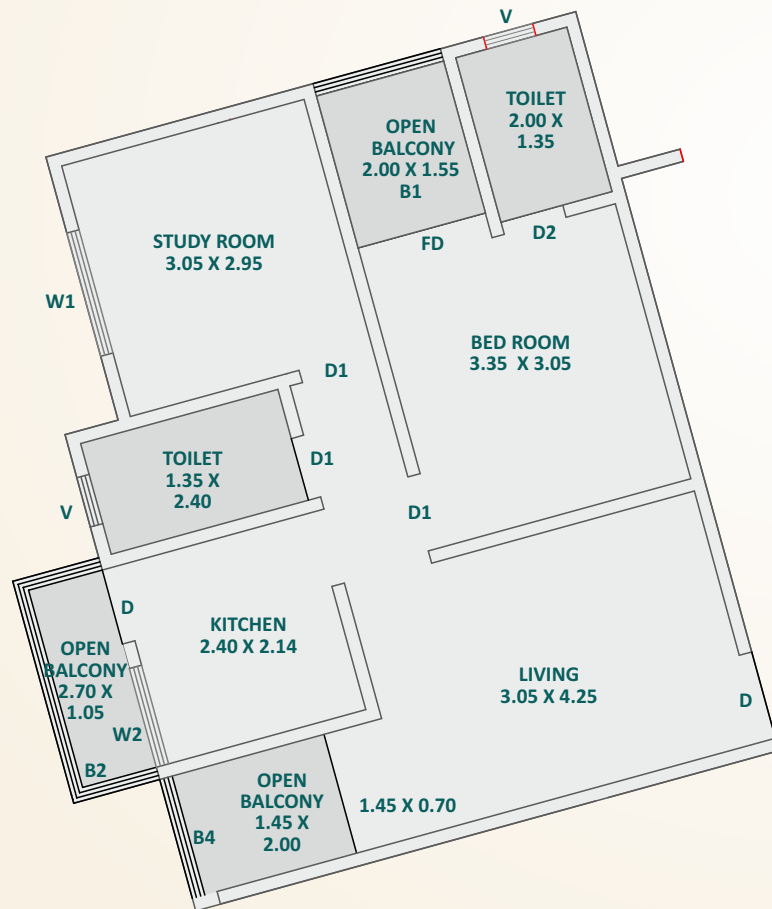


Flat No.	Carpet Sq.ft	Balcony Sq.ft	Terrace Sq.ft	Total Sq.ft
101	401.28	37.67	0	439

# 2 BHK

## Convenient Homes

B and C wing  
106 / 206 / 306 / 406



Flat No.	Carpet Sq.ft	Balcony Sq.ft	Terrace Sq.ft	Total Sq.ft
2 BHK				
106	540.46	95.34	0	636



## Play, Pray & Rejuvenate.

Satyam Shivam has something for all, a children's play area, a temple and a well equipped club house. Come experience Shivam, Experience Convenience.



Conveniently Beautiful 





## Kitchen

Granite Kitchen Platform with Stainless Steel Sink  
Coloured Glazed Tiles Dado Upto Sill Level.  
Piped Gas System.  
Provision For Exhaust Fan in Kitchen.



## Bathroom

Concealed Plumbing With Branded (ISO) Make.  
Hot & Cold Water Mixer Unit in Bathroom With  
Branded Sanitary Ware.  
Solar Water Tap In Bathroom.



## Paints

Internal Painting with Washable Oil Bond Paint in  
Pleasing Shades & External walls with Decorative  
Semi Acrylic Paint.



## Electrification

Intercom and Television Point in Living and  
Master Bedroom.  
Concealed Electrical Wiring of ISI Mark  
and Distribution Boards  
with Miniature Circuit Breakers.  
Provision For Exhaust Fan in Bathroom  
and Kitchen



## Building Specifications

Earthquake Resistant R.C.C. Frame Structure.  
6" Thick External Wall And 4" Thick Internal Walls.  
Sand Faced Cement Plaster External and Neeru  
Finish Plaster Internally.



## Tiling

2' X 2' Vitrified Tiles for Living and 18"x18" Terrace.  
Non Skid Ceramic Flooring in Toilet with 7ft.  
Coloured Ceramic Designer Tiles Dado.



## Doors

All Internal Doors of Good Quality Flush Door.  
Elegant Main Entrance Door with Good Quality  
Door Fittings.



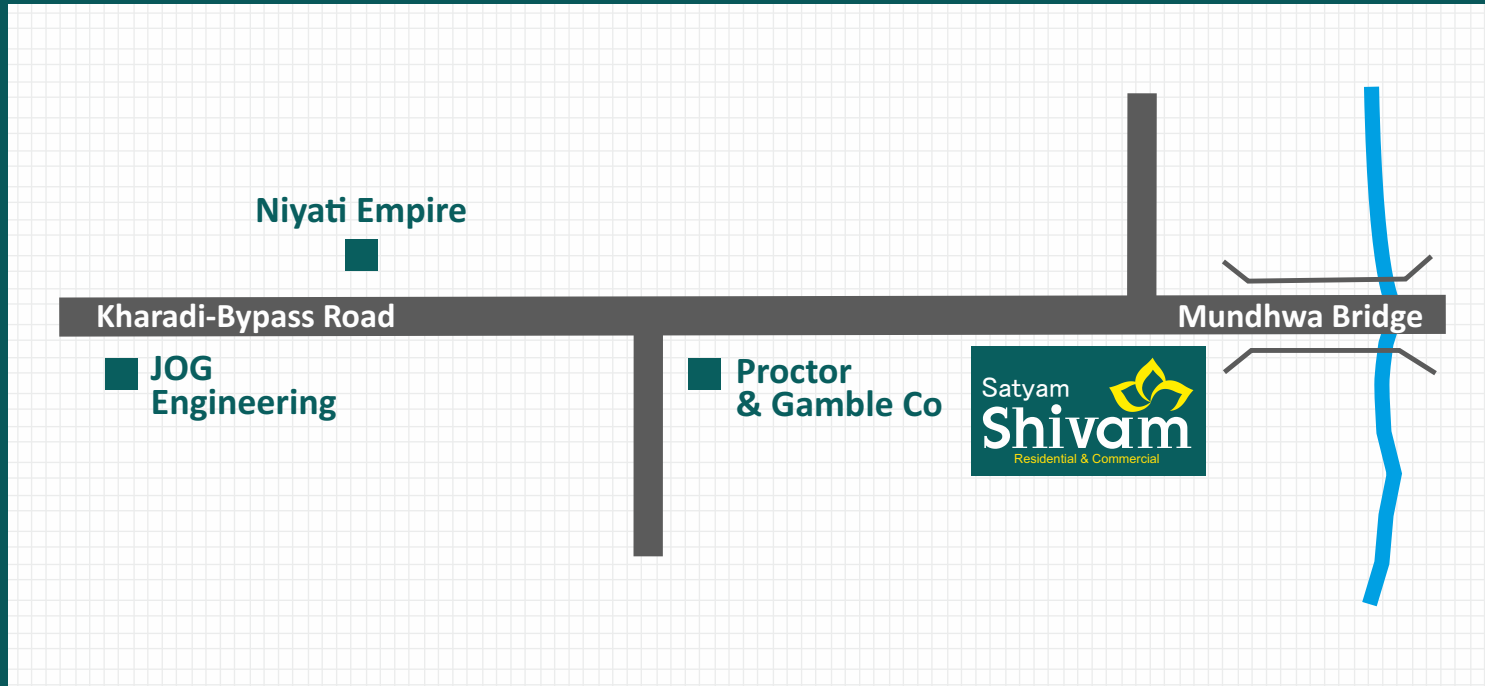
## Windows

Powder coated aluminum sliding windows.  
Granite window seals.

# The Conveniences

Club House | Indoor Game | Gymnasium | Rain Water Harvesting | Branded Lift  
Generator Back up For Lift and Common Area | Decorative Entrance Lobby  
Internal Concrete and Paving Block | Intercom Facility | CCTV Camera  
Security | Solar System | Children's Play Area

# Conveniently Located.



**Credits** 

**Licensed Engineer**  
Somnath Kerur, Pune

**RCC Consultant**  
Spectrum, Pune

**Legal Advisor**  
Adv. Jayant Pande, Pune

**Brand Promotion**  
Creative Boat, Pune



**Raghoba Patil Nagar, Shree Datta Colony,  
Mundhwa by-pass Road, Kharadi, Pune-411014.**  
**+91 7775045599 | +91 7775074499**  
**www.satyamgroup.in | sales@satyamgroup.in**



The project has been registered via MahaRERA registration No. P52100020589 and is available on the website <https://maharera.mahaonline.gov.in> under registered projects.