



Urban Homes II Extension

SECTOR 86, GURUGRAM



Designed by renowned architect



VIVEK SINGH RAO

RAO AND ASSOCIATE
Architects and Planners
374, Udyog Vihar 4, Gurugram

CORPORATE OFFICE
217-A & 217-B, 2ND FLOOR, SUNCITY BUSINESS TOWER,
GOLF COURSE ROAD, SECTOR-54, GURUGRAM

PYRAMIDINFRATECH.COM



COMFORT,
SAFETY
& MORE THAN
JUST A PLACE
TO LIVE



PYRAMID
INFRATECH PVT. LTD.



Urban Homes II Extension

Sector 86, Gurugram



Urban Homes II Extension

PYRAMID INFRATECH

Pyramid Infratech Group positions itself as the name of reliability in the real estate segment especially in affordable housing. Distinguishing features that make Pyramid unique within the industry are its in-house framework right from procurement of land to designing to construction including backward integration. Our in-house activities not only help to control the cost but also helps to deliver quality products at Affordable Rates. Pyramid has marked its footprints in real estate segment within a very short time - span demonstrating its construction quality, innovation, customer satisfaction and on time project implementation of its on-going affordable housing projects situated at Sector 70A , Sector 86, Sector 85, Sector 76 and Sector 67A at Gurugram, Haryana.

PEOPLE CENTRIC COMMITMENT TO QUALITY

We at Pyramid Infratech have committed to providing unmatched quality and timely delivery to our customers. We promise reliability in land, material and money. What truly distinguishes us from the rest in the industry is our constant endeavour to deliver innovation, unparalleled concepts, multi-dimensional realty solutions and high service standards.

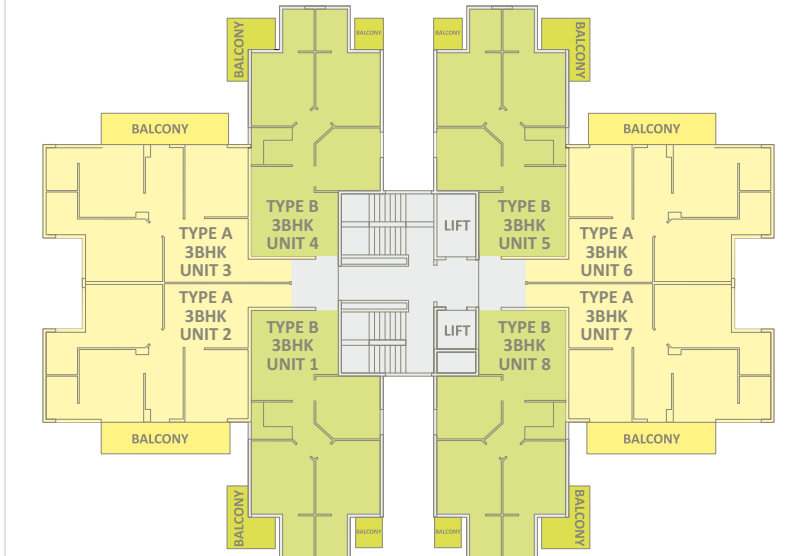


Project Architect Firm:
RAO AND ASSOCIATE
• Architects • Engineers • Valuers
• Interior Designers • Vaastu Consultants



Site Plan

Urban Homes-II, Extension



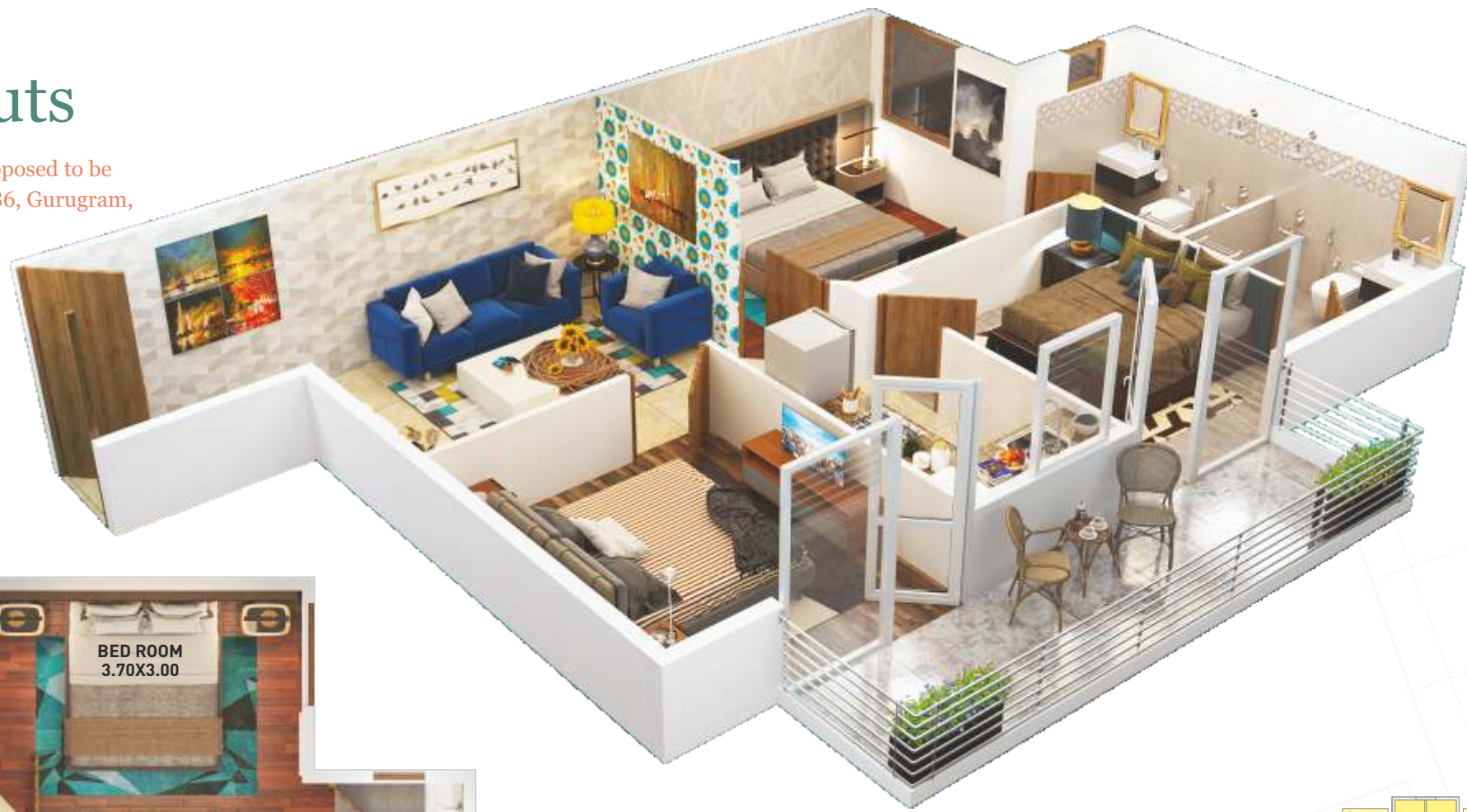
3 BHK TOWER
TYPICAL FLOOR PLAN

Prime Location In Sector 86, Gurgaon

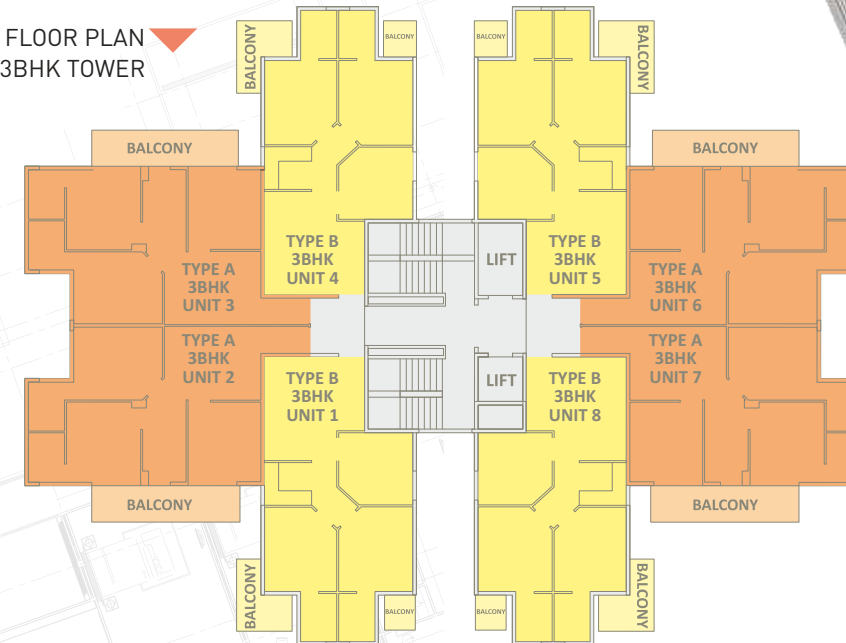
- Strategically located within hailing distance from NH8
- Well connected and in close proximity to dwarka Expressway, KMP Expressway, Manesar
- RIL SEZ, IGI and Domestic airport
- Easy accessibility to proposed Metro station and ISBT
- In close proximity to already operational known industries such as Maruti, Honda, GIVO, Tilda etc.
- Approx 10 min drive from Haldiram

Project Flat Layouts

Flat Layout in Affordable Group Housing colony proposed to be developed by Pyramid Infratech Pvt. Ltd. at Sector 86, Gurugram, Haryana



TYPICAL FLOOR PLAN OF 3BHK TOWER

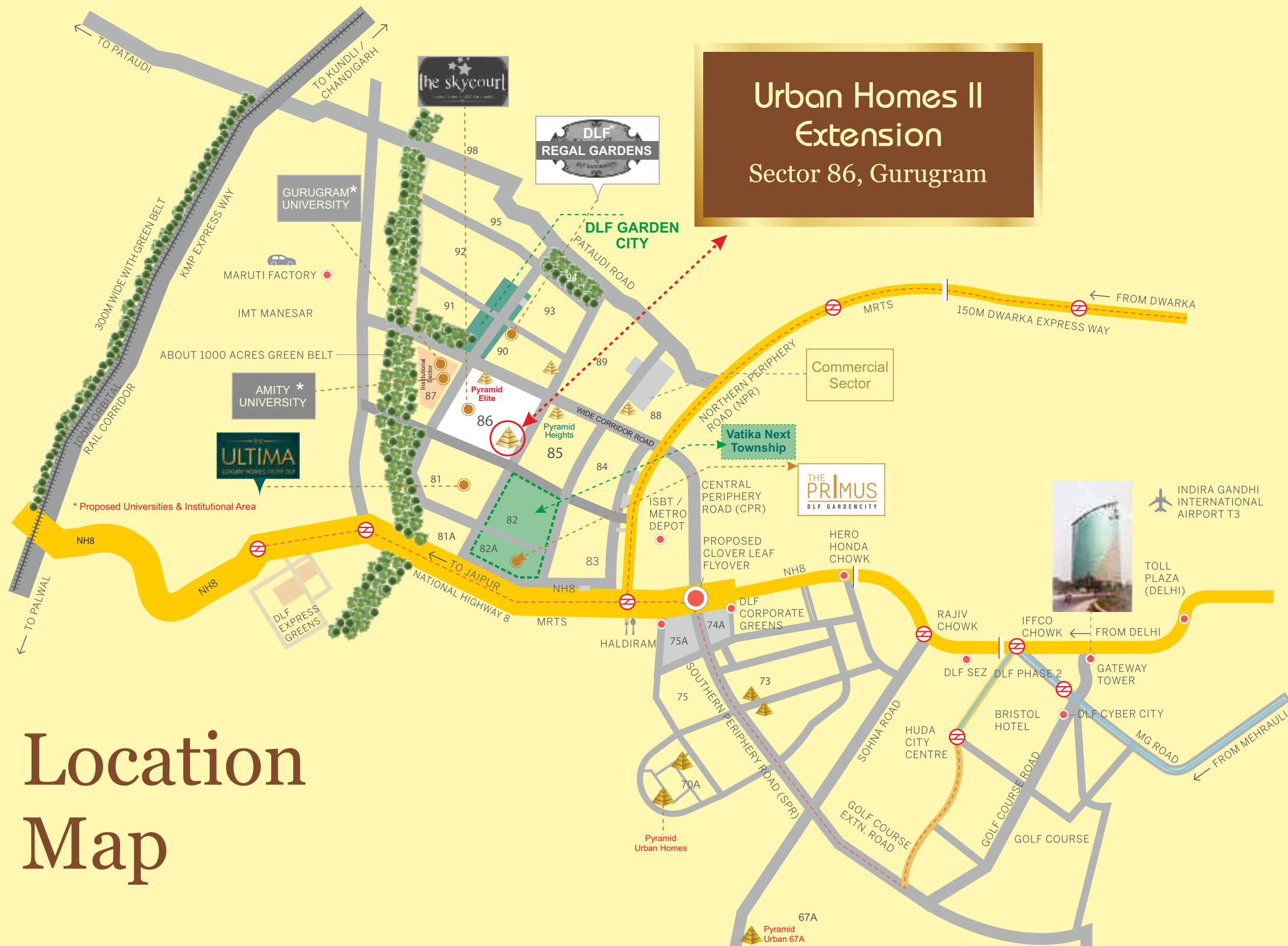


TYPE B FLOOR PLAN 3BHK

CARPET AREA = 645.25 SFT.
 BALCONY AREA = 75.40 SFT.

- 3 Bedrooms
- 2 Toilets
- Kitchen & Lobby
- 2 Sit-out Balconies





Location Map

Tentative Project Specification

LOBBY FLOORING	TILES / IPS
LOBBY WALL CEILING FINISH	OIL BOND DISTEMPER/ COLOUR WASH
BEDROOM FLOORING	TILES / IPS
BEDROOM WALL CEILING FINISH	OIL BOND DISTEMPER / COLOUR WASH
TOILETS WALL FINISH	TILES UPTO 4 FEET & OBD / COLOUR WASH IN BALANCE AREA
TOILETS FLOORING	TILES / IPS
KITCHEN FLOORING	TILES / IPS
KITCHEN PLATFORM	STONE / TILES / IPS
KITCHEN WALL FINISH	PLASTER / TILES UP TO 2 FEET HIGH ABOVE STONE/TILE COUNTER AND OBD / COLOUR WASH IN BALANCE AREA
FIXTURE AND FITTINGS	SINGLE BOWL STAINLESS STEEL SINK CP / PVC / PTMT FITTINGS
BALCONY FLOORING	TILES / IPS
WINDOW	HARDWOOD / MS Z-SECTION / FIBER / COMPOSITE / ALUMINUM FRAME
DOOR FRAME / DOORS	FRAME - HARDWOOD / M.S / FIBER / COMPOSITE DOORS - COMPOSITE / FIBER / ALUMINUM / FLUSH DOOR ETC.
COMMON AREA FLOORING	STONE / TILES / IPS
LIFT LOBBY	STONE / TILES / IPS
CHINAWARE	STANDARD FITTING
ELECTRICAL	ISI MARKED PRODUCTS FOR WIRING, SWITCHES AND CIRCUITS
SECURITY	GATED COMPLEX

Disclaimer: *Specifications and layouts mentioned in the brochure are tentative and subject to change.

Payment Plan

PARTICULARS	INSTALLMENTS
At the time of Application	05% of Total Sale Price
Within 15 days of issuance of allotment letter	20% of Total Sale Price
Within 6 months of issuance of allotment letter	12.5% of Total Sale Price
Within 12 months of issuance of allotment letter	12.5% of Total Sale Price
Within 18 months of issuance of allotment letter	12.5% of Total Sale Price
Within 24 months of issuance of allotment letter	12.5% of Total Sale Price
Within 30 months of issuance of allotment letter	12.5% of Total Sale Price
Within 36 months of issuance of allotment letter	12.5% of Total Sale Price

***Note-**

- Area is tentative and is subject to change as allowed under Affordable Housing Policy, 2013
- Final price of the flat will be based on actual area handed over to the allottee.
- Cheque/DD in favour of PYRAMID INFRATECH PVT. LTD. UBII EXT A/C

Project Details

PARTICULARS	DETAILS
PROJECT AREA	1.5 Acres
LOCATION	SECTOR 86
NUMBER OF FLATS	188
NUMBER OF TOWERS	2
NUMBER OF FLOORS (TOWERS WISE)	Tower 11 - G+14, Tower 12 - G+8