

Cherishing elite *Living...*



**INSIGNIA**

2 BHK Modern Flats @ Wakad

A Project By : VINODE Developers



The delight of *affection...*

Home is the place to stay together with part of our family. A good home is that makes the dweller feel so comfortable. Home is that has complete facility and proximity. Every one of us try our best to have that dream home some or the other day. Insignia is an influential project by "Vinode Developers". Infatuation to deliver the finest has been the aim embedded in this project..

The professional team has put in rigorous efforts in crafting this beautiful and excellent project, making it the better place to live in. "Vinode Developers" one of the pioneers in the industry has always believed in transparency and devotion when it comes to deal with their customers, offering them the best in terms of quality and standards. This has resulted in making "Vinode Developers" a brand name worth credulous.

"Vinode Developers" matchless quality standards and its reputation for giving the best is going to replicate in "Insignia" which it has been doing in its all projects till now. "Insignia" is a vision come true which is attributed with best of amenities that will make your living an entertainment pack and ecstatic.

The luxurious 2 BHK flats at "Insignia" are satisfied with homes that comprise affix of pleasing to the eye lifestyle intentionally planned and designed for the perfect family.



# INSIGNIA

2 BHK Modern Flats @ Wakad

It's a time to bulge full of happiness and delight.

"Vinode Developers" has brought you a splendid residential prospect with aptitude to change your life into a prospering future. Insignia is the place where your every wish will come true, where your family will experience living and your kids will be proud of you.

The elite apartments which are well spaced with the flawless recipe of luxury and supremacy. One can effortlessly gauge the standards and dignity involved in this project. Each home gives you the feel of a spectacular lifestyle you ever expected. Spacious and well-designed flats give you the pleasure of worth investing. One would enjoy life without negotiating his dreams. Homes are well planned which allow ample of sunlight and ventilation.

"Insignia" is a blend of all the addition factors that a great home has to offer. Excellent well connected location, state of the art comforts, luxurious lifestyle and proximity to grow are all the attributes that "Vinode Developers" have engineered as "Insignia".

\*A creative conceptualization for presentation purpose only

Enter in the door of

*happiness....*





## Specifications

- Structure**  
 Earthquake resistant RCC frame of superior Quality
- Masonry**  
 6 Inches Fly ash Bricks
- Plaster**  
 Gypsum finished walls internally and sand faced cement plaster for external walls
- Electrification**  
 Ample Light points with superior quality copper wiring  
 TV & telephone point in living and AC points in all rooms  
 Provision for inverter point
- Tiling**  
 Vitrified tiles for entire flat and anti skid tiles for terrace  
 Ceramic tiles up to window top in kitchen  
 Ceramic tiles up to 7 ft. height in toilets
- Doors**  
 Both sides laminated wooden doors with wooden/granite frame
- Painting**  
 Internal plastic emulsion paint in flat & superior quality synthetic based paint for exteriors of building
- Windows**  
 Powder coated Aluminium sliding windows with safety grills and granite frames
- Kitchen**  
 Granite top kitchen platform  
 Stainless steel sink  
 Glazed tiles dado
- Sanitary Ware**  
 Sanitary ware of Hindware/Jaquar  
 C.P Fittings  
 Jaquar or Hindware

\*A creative conceptualization for presentation purpose only



## Amenities



- Leisure & Lifestyle**
  - Landscape Garden
  - Open Gym
  - Kids Play Area
  - Senior Citizen sit out/corner
  - Jogging Track
- Safeguard for Valuables**
  - Security Cabin
  - Intercom
  - Fire Fighting System
  - CCTV camera at entrance gate
- Exiting Environs**
  - Grand Entrance Gate
  - Attractive elevation
  - Decorative Entrance Lobby
- Greener & Cleaner**
  - Tree Plantation
  - Rain Water Harvesting
  - Solar water heating system for toilet
  - Energy saving LED Lighting for common areas
- Comfort for peace of mind**
  - Ample Parking
  - Garbage Chute
  - Elevator with automatic door operation
  - Ample lighting for common area
  - Power back up for lifts & common area



\*A creative conceptualization for presentation purpose only





# INSIGNIA

2 BHK Modern Flats @ Wakad

Every single one of us visualizes an ideal home that is encircled by a big garden bursting of flowers and trees. It should be situated outside the city, on the outskirts of metropolis where you can find true peace and happiness. Home should have the attributes that represent your mystical world and personality with its location as well as its inner and outer design, which is assured by "Vinode Developers" at "Insignia". As situated in the core of the city, the location itself is so ideal that you can access to coveted places from any side in no time. Surrounding all key places like shopping malls, schools, colleges, hospitals, entertainment, IT parks and work places, "Insignia" stands apart as the most appropriate location.

The place is close to IT parks of Hinjewadi and Baner. Other industries are within reach. Well known Balewadi stadium is also close to the site. The surrounding is full of greenery and bear an eco-friendly atmosphere. To be more accurate, "Insignia" is blessed with a convenient location accessible from all sides within a reasonable time span.

for your *loved ones*....



\*A creative conceptualization for presentation purpose only



Type - 1  
Isometric View

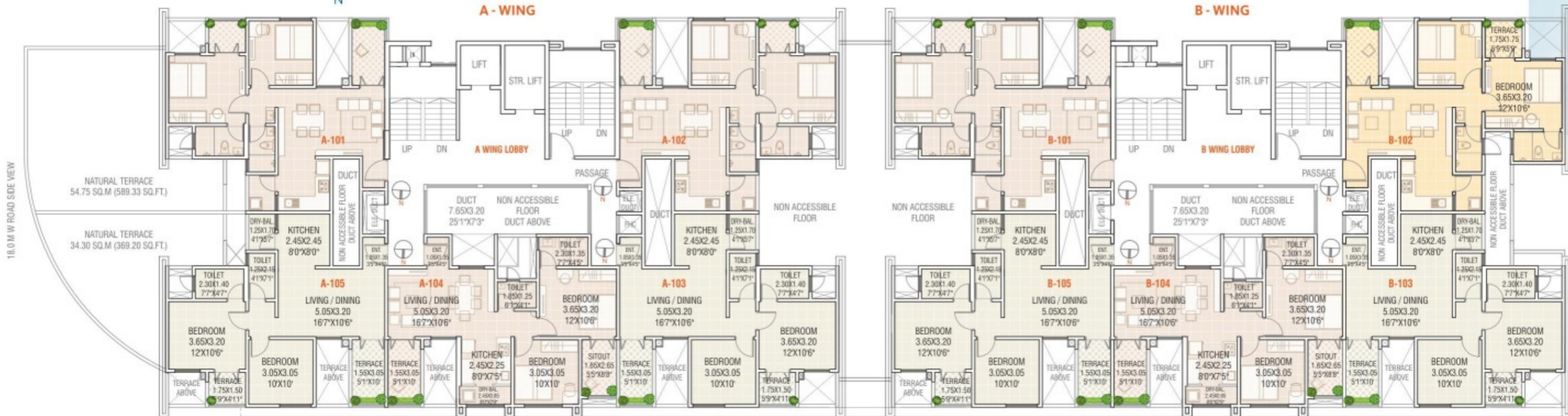
\*A creative conceptualization for presentation purpose only



Type - 2  
Isometric View

\*A creative conceptualization for presentation purpose only

# A & B Wing 1<sup>st</sup> Floor Plan



OPEN SPACE AREA

18.0 M W ROAD SIDE VIEW

18.0 M W ROAD SIDE VIEW

ENTRY / EXIT GATE

## A Wing 2<sup>nd</sup>, 4<sup>th</sup>, 6<sup>th</sup>, 8<sup>th</sup> & 10<sup>th</sup> Floor Plan



## A Wing 3<sup>rd</sup>, 5<sup>th</sup>, 7<sup>th</sup> & 9<sup>th</sup> Floor Plan





# Location Map



## AREA PROXIMITY

- Akshara School : 0.3 km
- Indira School / College : 0.6 km
- Pumpkin Patch School : 0.7 km
- Mumbai-Bangalore Rd. : 0.9 km
- Ginger Hotel : 1.0 km
- Hinjewadi IT Park : 2.5 km
- D Mart : 3.4 km
- E square Multiplex : 3.4 km
- Aditya Birla Hospital : 4.6 km
- Baner : 10 km
- Aundh : 14 km
- Pune University : 14.9 km

PROJECT BY :



[www.vinodedevelopers.com](http://www.vinodedevelopers.com)

Site Address : Insignia, Survey no 112/1, Vinode Nagar, Near Akshara International School, Wakad - 411057

Email id : [sales@vinodedevelopers.com](mailto:sales@vinodedevelopers.com)

**CONTACT : 77450 477 00 / 77450 577 00**

### Credits

Architect  
Subha Architects  
Pune.

R.C.C. Consultant  
G.A. Bhilare Consultants Pvt. Ltd.  
Pune.



Registration No. :  
**P52100016997**  
[maharera.mahaonline.gov.in](http://maharera.mahaonline.gov.in)

The project has been registered via  
MahaRERA registration number : **P52100016997**  
and is available on the website  
<https://maharera.mahaonline.gov.in> under registered projects.

Version 1  
Brochure Printed on :  
14 / 07 / 2018

**Disclaimer :** The contents / pictures / images / renderings / maps are purely indicative in nature and are artist's conception and not actual depiction of the buildings / landscapes etc. and shall not be considered as our offer / promise / commitment of any nature in respect of the project. The common areas that have been shown in any form whatsoever is / are for the entire building or phase of the project and that the common areas will not be available on completion of the first phase of the project or later phases. The common areas shall be available for the entire building and will be developed in a Phase-wise Manner, over a period of time and will be completed and handed over after all phases are completed and we have no objection for the same. You are requested to contact our Sales Team to understand the current details regarding the project and only after thorough understanding about the same, make a decision to book the apartment/s in the project.