

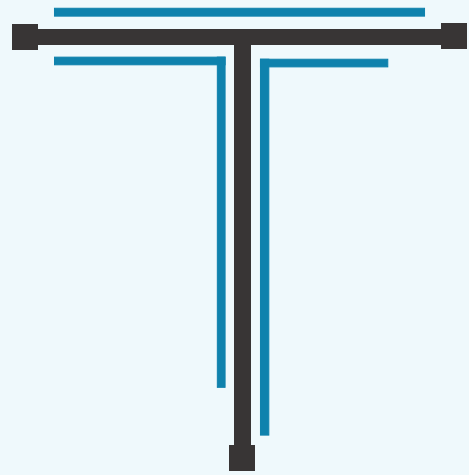
A  **T&T** GROUP PROJECT

  
HOMES

**INDIA'S**

**1<sup>st</sup>**

**DIGITAL  
HOUSING**



H O M E S

# The Future of Living is Here



Thanks to innovation, we have evolved from living in huts to townships over a period of centuries. But the nature of progress is to never stop. As evolution takes its course, the housing sector experiences a boom every few decades.

An ascension- from 'the present,' to 'the better.'

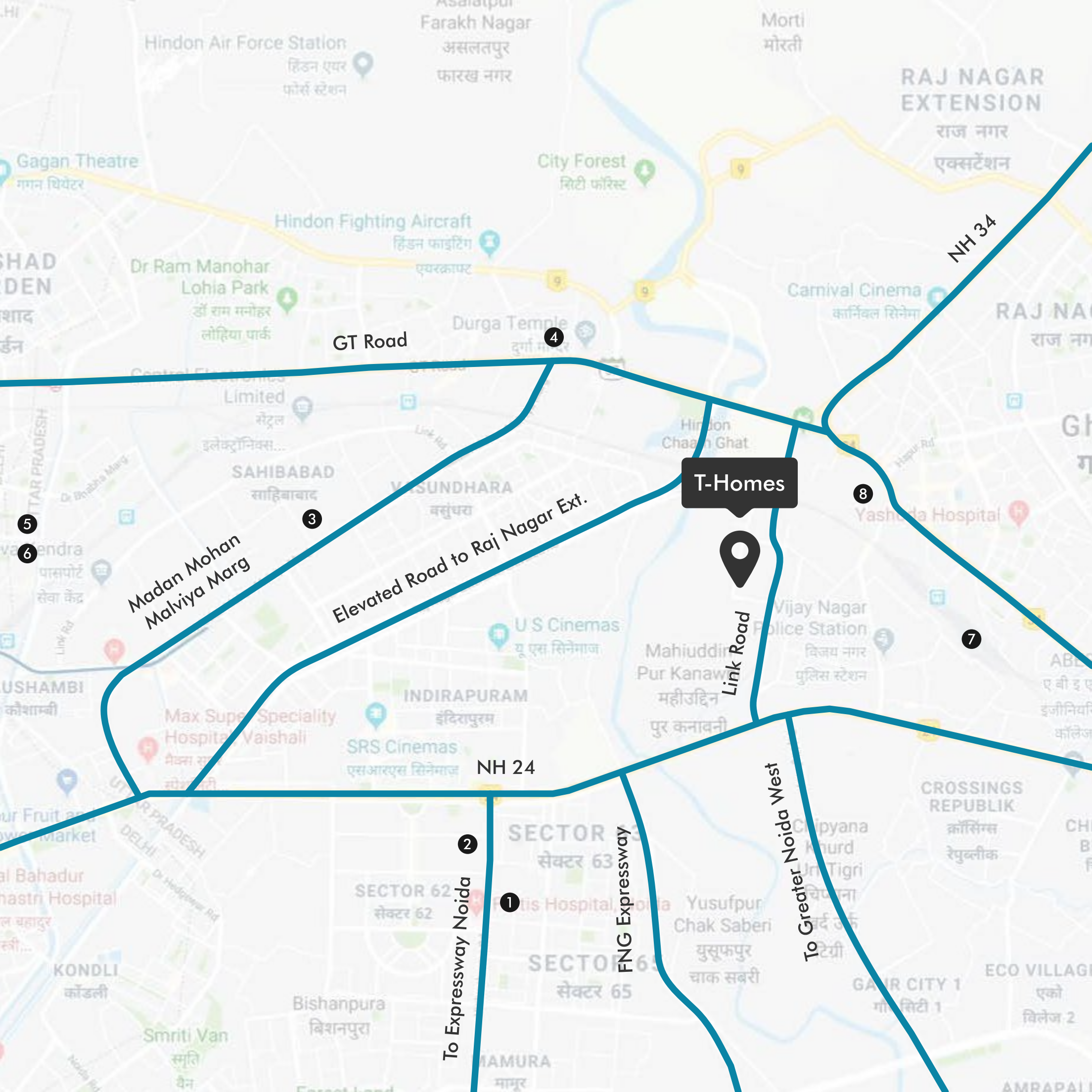
Backed by innovation and persistence, T-Homes will be the next big thing in housing.



# The Destination

Located at a convenient distance from the metro station, the towers are pinpointed near the national highway, with entry and exit gates to all sides of the road.

- 1 Fortis Hospital
- 2 Metro Station Sector-62
- 3 Metro Station Vaishali
- 4 Metro Station Mohan Nagar
- 5 Anand Vihar Railway Station
- 6 Anand Vihar ISBT
- 7 Ghaziabad Railway Station
- 8 Ghaziabad Metro Station
- 9 Ghaziabad New Bus Station



**T-Homes**

Madan Mohan  
Malviya Marg

Elevated Road to Raj Nagar Ext.

To Expressway Noida

FNG Expressway

To Greater Noida West

5

6

3

4

8

7

2

1

# The View

Inhale the fresh, rejuvenating view of the massive 48-Acre green estate on one side of the building, with the best of innovation placed perfectly in the lap of nature's ingredients.



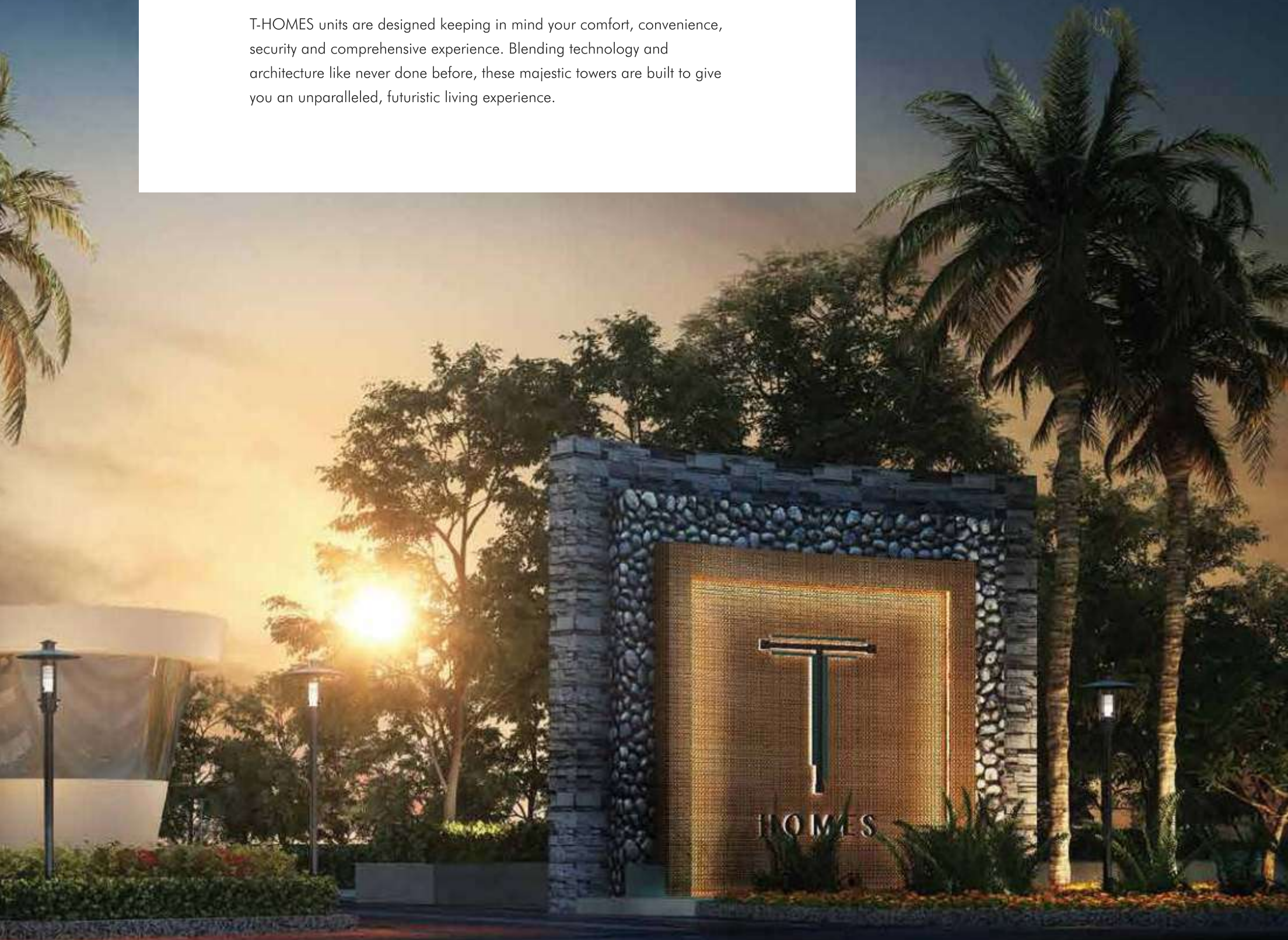






# A Small Step of Innovation, a Giant Leap for Comfort

T-HOMES units are designed keeping in mind your comfort, convenience, security and comprehensive experience. Blending technology and architecture like never done before, these majestic towers are built to give you an unparalleled, futuristic living experience.








# The Perfect Space for the Futurist in You

T-HOMES are architecturally designed to deliver space and comfort, all the while automated to provide control and convenience to you. With every unit linked to the T-HOMES app, you get a control on your living and peace of mind like never experienced before. With control of various aspects of numerous rooms of your house in your pocket, you become the architect of your own futuristic sanctuary.





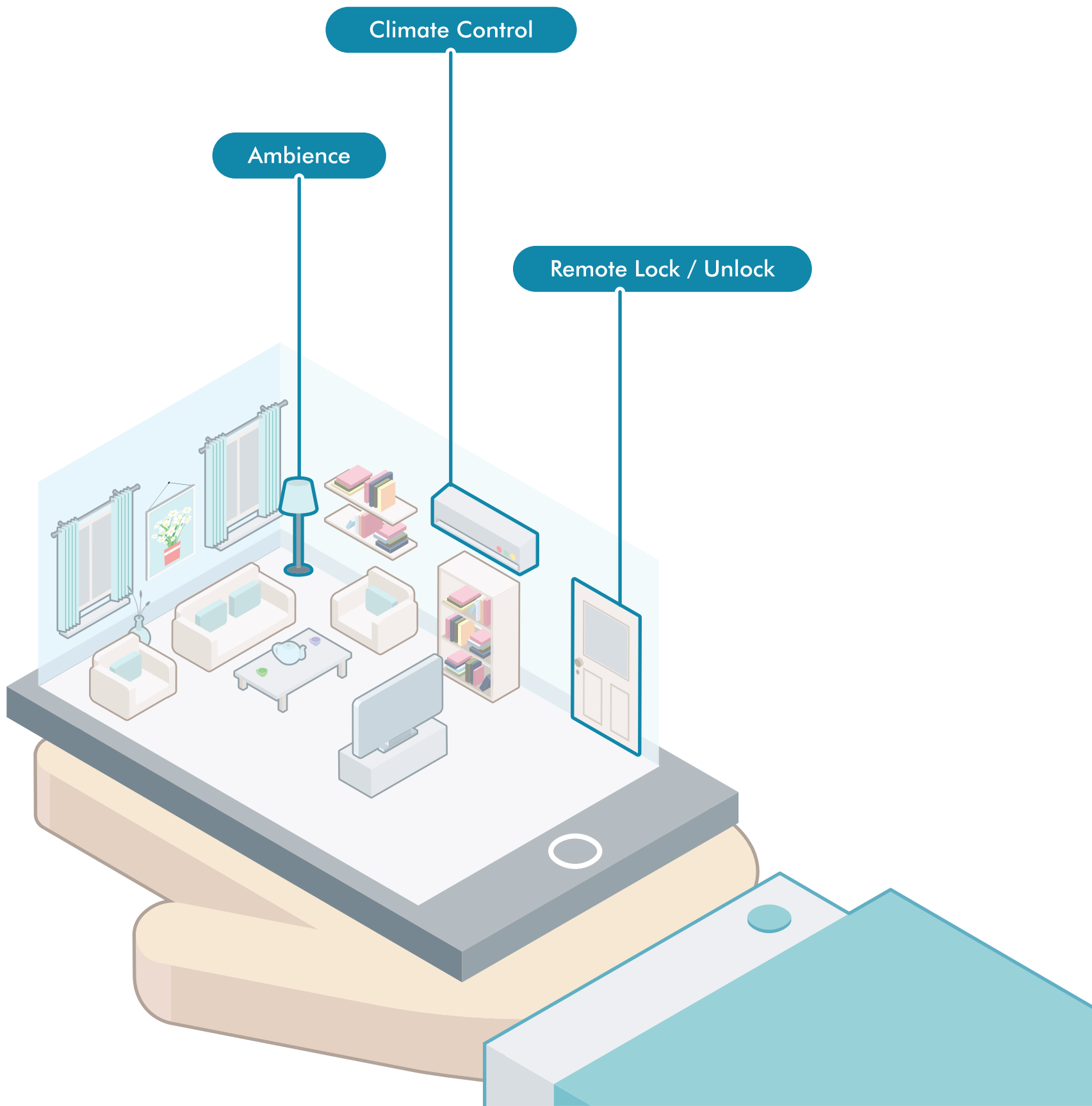
# The Living Room: Redefined

## A Home with a Soul

We know that decorum creates a first impression like nothing else does. And the first impression is the last impression.

Let us walk you through the automated features of our living rooms that ensure a warm, welcoming environment.







# A Living Room that Welcomes you

With guests being welcomed, house parties being hosted, and TV marathons being held, your living room is where your heart is.

With our automation features, top-of-the-line flooring, remote security access and ambience settings, your living room becomes livelier than ever.

## CLIMATE CONTROL

Let your house help set the perfect climate for you. Because it understands when you need to 'chill out.'

## AMBIENCE

Control lighting and color to create the perfect ambience. Because 'on and off' is for boring people.

## REMOTE LOCK / UNLOCK

Forgot to lock the door? Check stats and operate them remotely via the T-HOMES app.



A modern bedroom interior featuring a bed with white linens, a wooden headboard, a nightstand, and a large window. The room is brightly lit, and the text is overlaid on a white rectangular background.

# The Bedroom: Reimagined

Reality is Finally Better than your  
Dreams

They say that sleep is for dreamers. But only dreamers change the world.

The assistive features of our bedrooms that let you regulate lighting, ambience and all devices help you cash in on your relaxation to the maximum. Let us show you how.

# A Bedroom that Comforts you

With comfort being a priority, this is your relaxing sanctuary.

With control on lighting, climate, ambience and devices on your fingertips, you can't imagine a more stress-free environment. Needless to say, this is accompanied by spacious architecture and a spellbinding view that your house treats you with, by opening and closing curtains on set times.

## **SUNRISE TIMERS**

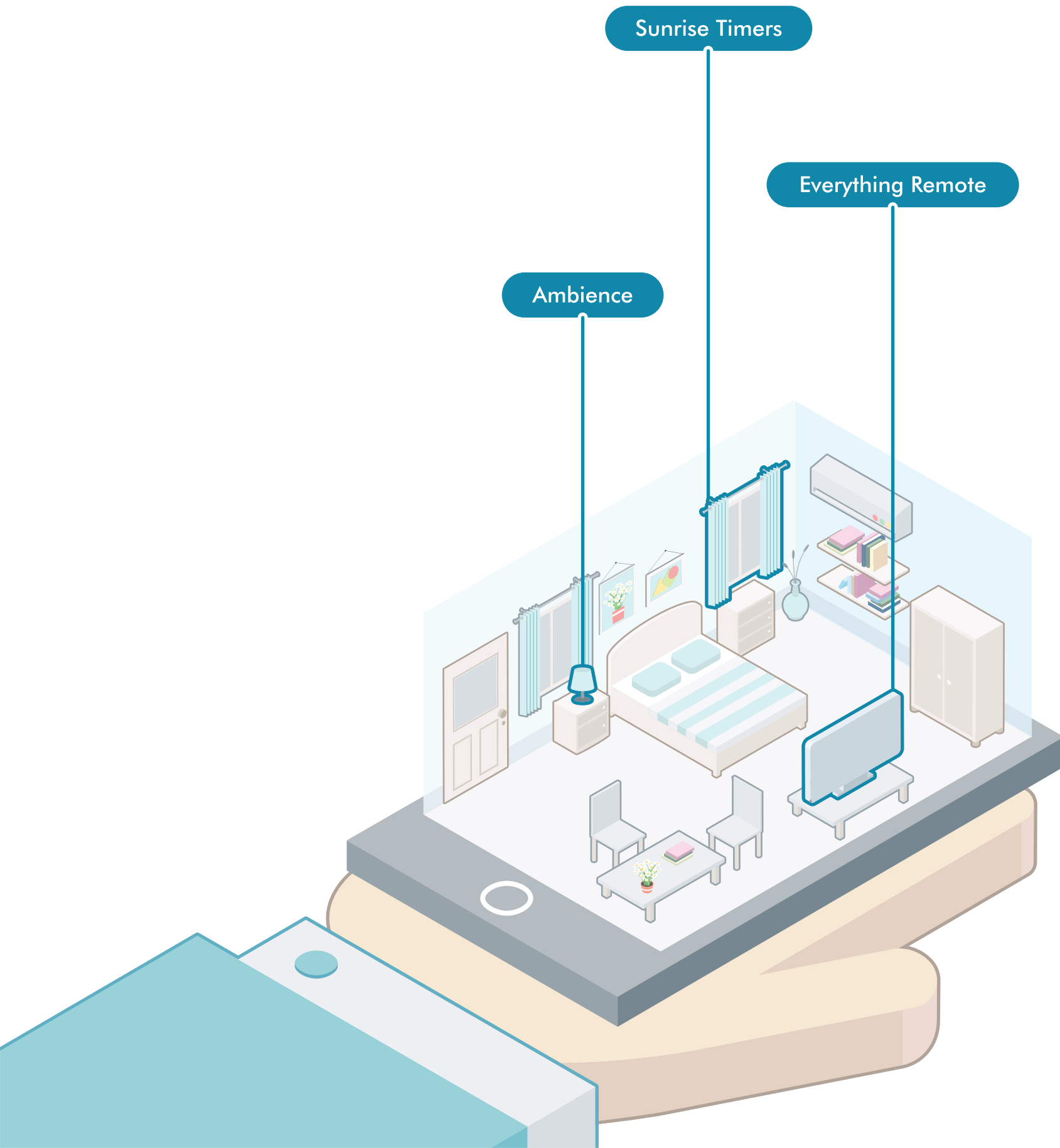
Let your room wake you up by opening curtains at a set time in the morning. Let there be light!

## **AMBIENCE**

Set up the perfect ambience and climate for a deep sleep.  
Dream on!

## **EVERYTHING REMOTE**

Control your electronic devices remotely via the T-HOMES app.



Sunrise Timers

Everything Remote

Ambience



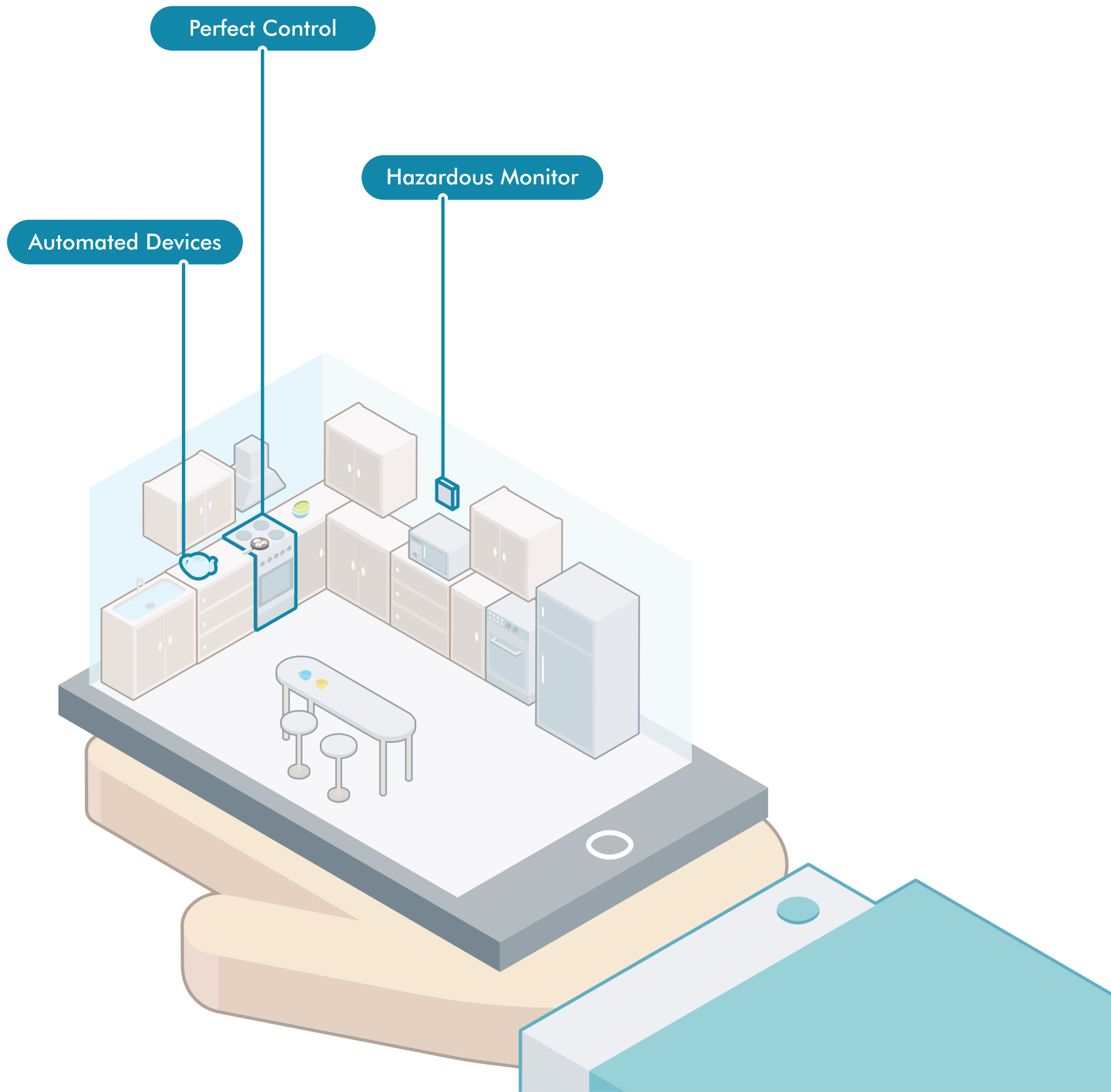


# The Kitchen: Remodelled

## Everything Seasoned with Innovation

You are what you eat. Trust us, maximizing hygiene does not require much effort.

Our smart kitchens enable you control on devices and storage, along with UV cleaning for 'de-germification.' Let us walk you through.





# A Kitchen that Assists you

From the relaxation of cooking a meal to midnight snacking- this is a mother's laboratory as much as it is a child's fantasyland.

This is where convenience and hygiene meet- with the facility of automating devices to heat your food and regulate themselves for efficient power use, to UV cleaning and automated garbage disposal.

## **AUTOMATED DEVICES**

Let the house greet you with your morning essentials made by our automated devices.

## **PERFECT CONTROL**

Use automation synced with T-HOMES app to ensure you don't leave any devices running as you rush out for work. Humans can make mistakes, after all!

## **HAZARDOUS MONITORING**

Let the kitchen recommend you breathers in between cooking to ensure your health is maintained

## **GAS LEAKAGE MONITORING**

Have peace of mind as your kitchen notifies you and allows you control measures in case of Gas leaks



# The Bathroom: Revamped

## Wash Your Troubles with Tech Bubbles

Showers are made for thinking. And cleansing the negativity out of you.

Our washrooms are equipped with interactive features that allow pre-heating of water, temperature control and a 'smart pot' for maximum convenience. Let us demonstrate.



# A Bathroom that is Convenient

This is the place where you cleanse the negativity out of you. This is also the place where you sit and contemplate life and its meaning.

Cleanse with grace and relax to the maximum with premium flooring and tiling, spacious architecture and automated devices synced to your app for timers and remote control. On the top of it all, the smart seat allows you maximum convenience- adding on to the value of a perfect bathroom!

## SMART POT

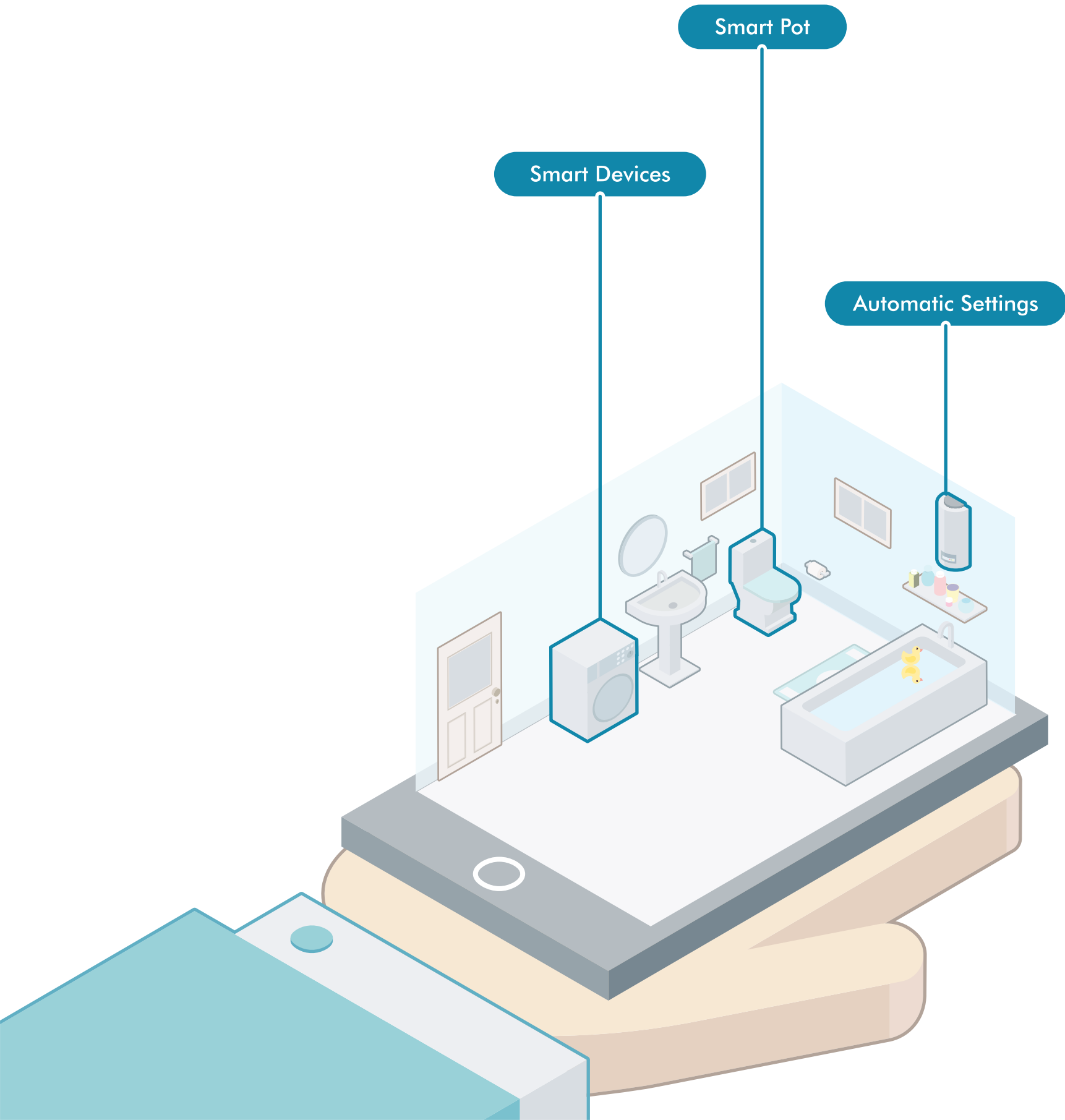
The 'smart pot' regulates its temperature before you sit on it, and helps you clean up better with an automated jet. No more gathering up the courage to sit on a frozen seat in winters!

## SMART DEVICES

Smart automation helps you regulate numerous devices for efficient power usage.

## AUTOMATIC SETTINGS

Let your home heat up water to the perfect temperature for you while you're on your way back from work, and as you wake up. Waiting never compliments relaxation, after all!



Smart Pot

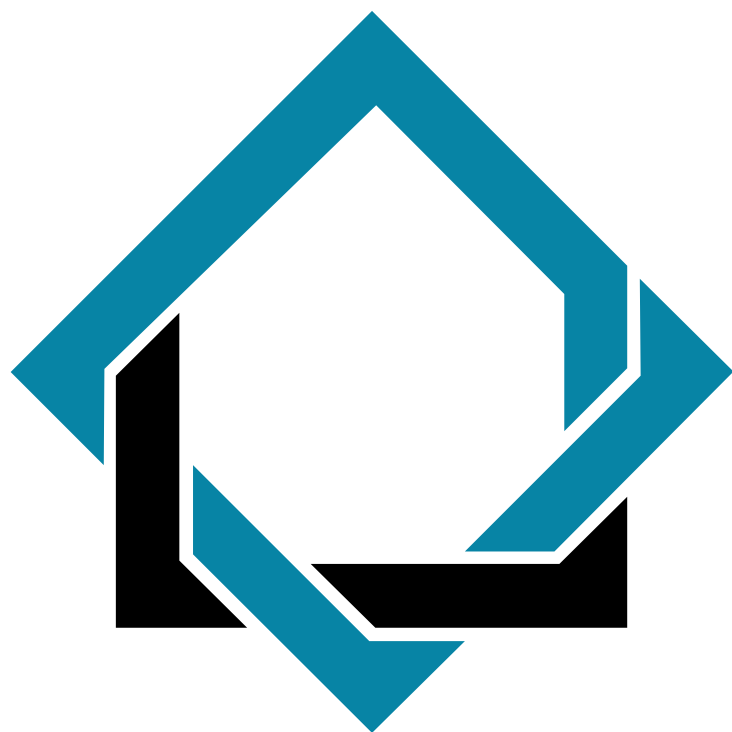
Smart Devices

Automatic Settings

# Your Home, You're the Architect

Customize the features of your home with the help of our interface. Set timers for the house to 'wake up,' heat water and food for you, 'welcome you,' set the perfect ambience for home surroundings, calibrate numerous features, security protocols and assists that you will need from your home to make your life easy, comfortable and hassle-free. With you customizing your home's features right down to the minute details, you become the architect of your own comfort, control and convenience. Yes, it's possible. You can have your cake and eat it too!







# Living, Reinvented

Imagine living in a home that is more than brick and mortar.

A home that assists you with everyday tasks. That guards you and your family when you sleep. That protects your belongings when you're away. That welcomes you with the perfect ambience and climate when you return.

A home that has a soul.

This is exactly what T-HOMES is all about- reinventing living with a mix of automation and innovative architecture- all synced to the T-HOMES app for your maximum convenience.



# Your Living Space

## THE UNIT PLAN

### 3 BHK Mark 1

#### 3 Bedrooms, 2 Washrooms, 1 Hall, 1 Kitchen and Balconies

Super area	1350.00 sq.ft. (125.42 sq.mt.)
Covered area	994.25 sq.ft. (92.37 sq.mt.)
Carpet area	797.39 sq.ft. (74.08 sq.mt.)

#### DISCLAIMER:

The **total area** of an apartment is the net summation of the entire area covered by its periphery walls, including balconies, lofts, areas under walls, etc.

A **common area** is, in real estate or real property law, the "area which is available for use by more than one person..." The common areas are those that are available for common use by all tenants, (or) groups of tenants and their invitees.

1 sq. m= 10.764 sq. ft

Colour of the tiles can be changed prior to notice | variation in the colour of the tiles/granite/mica may occur | Areas in all categories may vary up to 3% to any degree without change in cost, variation of more than 3% will entertain cost applications



▲  
ENTRY

# Your Living Space

## THE UNIT PLAN

### 3 BHK Mark 2

#### 3 Bedrooms, 3 Washrooms, 1 Hall, 1 Kitchen and Balconies

Super area	1525.00 sq.ft. (141.67 sq.mt.)
Covered area	1090.81 sq.ft. (101.34 sq.mt.)
Carpet area	883.50 sq.ft. (82.08 sq.mt.)

#### DISCLAIMER:

The **total area** of an apartment is the net summation of the entire area covered by its periphery walls, including balconies, lofts, areas under walls, etc.

A **common area** is, in real estate or real property law, the "area which is available for use by more than one person..." The common areas are those that are available for common use by all tenants, (or) groups of tenants and their invitees.

1 sq. m= 10.764 sq. ft

Colour of the tiles can be changed prior to notice | variation in the colour of the tiles/granite/mica may occur | Areas in all categories may vary up to 3% to any degree without change in cost, variation of more than 3% will entertain cost applications



# Your Living Space

## THE UNIT PLAN

### 3 BHK Mark 3

#### 3 Bedrooms, 3 Washrooms, 1 Hall, 1 Kitchen and Balconies

Super area	1550.00 sq.ft. (143.99 sq.mt.)
Covered area	1144.32 sq.ft. (106.12 sq.mt.)
Carpet area	875.01 sq.ft. (81.29 sq.mt.)

#### DISCLAIMER:

The **total area** of an apartment is the net summation of the entire area covered by its periphery walls, including balconies, lofts, areas under walls, etc.

A **common area** is, in real estate or real property law, the "area which is available for use by more than one person..." The common areas are those that are available for common use by all tenants, (or) groups of tenants and their invitees.

1 sq. m= 10.764 sq. ft

Colour of the tiles can be changed prior to notice | variation in the colour of the tiles/granite/mica may occur | Areas in all categories may vary up to 3% to any degree without change in cost, variation of more than 3% will entertain cost applications





# Your Living Space

## THE UNIT PLAN

### 3 BHK Mark 4

3 Bedrooms, Kids Room, 3 Washrooms, 1 Hall, 1 Kitchen and Balconies

Super area	1720.00 sq.ft. (159.79 sq.mt.)
Covered area	1311.70 sq.ft. (121.86 sq.mt.)
Carpet area	1032.59 sq.ft. (95.93 sq.mt.)

#### DISCLAIMER:

The **total area** of an apartment is the net summation of the entire area covered by its periphery walls, including balconies, lofts, areas under walls, etc.

A **common area** is, in real estate or real property law, the "area which is available for use by more than one person..." The common areas are those that are available for common use by all tenants, (or) groups of tenants and their invitees.

1 sq. m= 10.764 sq. ft

Colour of the tiles can be changed prior to notice | variation in the colour of the tiles/granite/mica may occur | Areas in all categories may vary up to 3% to any degree without change in cost, variation of more than 3% will entertain cost applications



# Your Living Space

THE UNIT PLAN

## 4 BHK

4 Bedrooms, 4 Washrooms, 1 Hall, 1 Kitchen and Balconies

Super area	1950.00 sq.ft. (181.16sq.mt.)
Covered area	1453.98 sq.ft. (135.08 sq.mt.)
Carpet area	1164 sq.ft. (108.21 sq.mt.)

### DISCLAIMER:

The **total area** of an apartment is the net summation of the entire area covered by its periphery walls, including balconies, lofts, areas under walls, etc.

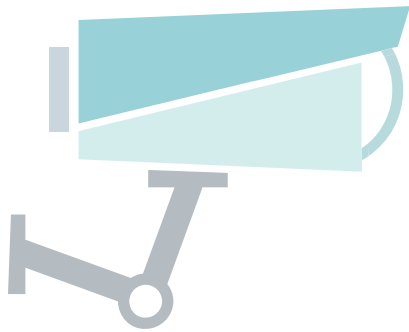
A **common area** is, in real estate or real property law, the "area which is available for use by more than one person..." The common areas are those that are available for common use by all tenants, (or) groups of tenants and their invitees.

1 sq. m= 10.764 sq. ft

Colour of the tiles can be changed prior to notice | variation in the colour of the tiles/granite/mica may occur | Areas in all categories may vary up to 3% to any degree without change in cost, variation of more than 3% will entertain cost applications

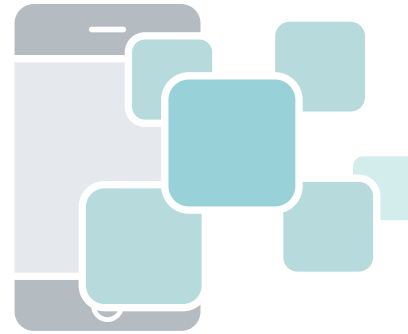
# The T-HOMES Essentials

We believe that perfection is not an abstract concept. It can be achieved by caring for your customers holistically. And caring is all about paying attention to detail.



## SECURITY PLUS

Every T-HOMES unit comes with security cams installed at entry that you can access on your phone via the T-HOMES app at any point of time.



## THE T-HOMES MOBILE APPLICATION

Designed to sync with everything around the house from lights to geysers and coffee makers to TVs, the app allows you remote access to the whole house's functioning with an easy-to-use interface and no distance barriers.

With your home in your pocket, you can go anywhere and have a peace of mind on the status of your house. You can access security features to lock/unlock the house, get alerts on alarms, check and regulate power usage around the house, control climate, ambience and access security cams anytime for a complete peace of mind!

# Life at T-HOMES

We all know that quality of life always depends on holistic experience. And that is what we strive towards at T-HOMES.

With a pool area, gyms, hallways for occasions, clubhouse, indoor/outdoor game areas, park and jogger's tracks, every day in the life of a T-Homer is filled with splendor, activity and excitement.



# Specifications

## LIVING ROOM

FLOOR	Vitrified Tiles
EXTERNAL DOOR AND WINDOW	Powder Coated Aluminium / UPVC with glass.
WALLS	Designer concept paint with combination of texture /wall paper & rich Plastic Emulsion Paint of Dulux / Asian paints make or equivalent.
MAIN ENTRY DOOR	Finish - 9 ft high Teakwood doors with Wooden Frame, yale /Samsung or equivalent Smart Lock with T Homes application controlled Access.
HARDWARE	All Doors and windows with metal fittings along with lock on the main door.
ELECTRICAL	Copper wiring and PVC Concealed conduit, Provision for adequate light and power points as well as television and TV outlets with modular switches and protective M.C.B's.

## DINING

FLOOR	Vitrified Tiles
EXTERNAL DOOR AND WINDOW	Powder Coated Aluminum/ UPVC with glass.
WALLS	Rich Plastic Emulsion Paint Of Dulux/ Asian paints make or equivalent.
HARDWARE	All Doors and windows with metal fittings along with mortise lock on the main door.



---

ELECTRICAL	Copper wiring and PVC Concealed conduit, Provision for adequate light and power points as well as television and TV outlets with modular switches and protective M.C.B's.
------------	---

## **BEDROOM**

FLOOR	Laminated Wooden Flooring.
-------	----------------------------

---

EXTERNAL DOOR AND WINDOW	Powder Coated Aluminum/ UPVC with glass.
--------------------------	--

---

WALLS	Rich Plastic Emulsion Paint Of Dulux/ Asian paints make or equivalent.
-------	--

---

INTERNAL DOOR	Finish - 8 ft high Teakwood doors with Wooden Frame.
---------------	--

---

HARDWARE	All Doors and windows with metal fittings along with mortise lock on the main door.
----------	---

---

ELECTRICAL	Copper wiring and PVC Concealed conduit, Provision for adequate light and power points as well as television and TV outlets with modular switches and protective M.C.B's.
------------	---

## **MASTER BEDROOM**

FLOOR	Laminated Wooden Flooring.
-------	----------------------------

---

EXTERNAL DOOR AND WINDOW	Powder Coated Aluminum / UPVC with glass.
--------------------------	---

---

WALLS	Designer concept paint with combination of texture /wall paper & rich Plastic Emulsion Paint of Dulux/ Asian paints make or equivalent.
-------	---

---

INTERNAL DOOR	Finish - 8 ft high Teakwood doors with Wooden Frame.
---------------	--

---

HARDWARE	All Doors and windows with metal fittings along with lock on the main door.
----------	---

---

ELECTRICAL	Copper wiring and PVC Concealed conduit, Provision for adequate light and power points as well as television and TV outlets with modular switches and protective M.C.B's.
------------	---

## **KITCHEN**

FLOOR	Vitrified Tiles
EXTERNAL DOOR AND WINDOW	Powder Coated Aluminum/ UPVC with glass.
WALLS	Ceramic tiles of 2' height from the platform.
FITTINGS	C.P. fittings Jaguar, Grohe or Equivalent with double bowl Stainless steel Sink.
INTERNAL DOOR	Open
HARDWARE	All Doors and windows with metal fittings.
ELECTRICAL	Copper wiring and PVC Concealed conduit, Provision for adequate light and power points with modular switches and protective M.C.B's.
WOOD WORK	Complete Modular wood work, with upper level cabinets.
APPLIANCES	Double door Refrigerator of Samsung/LG/whirlpool or Equivalent, Integrated hob chimney and integrated Microwave.

## **TOILET MASTER BEDROOM**

FLOOR	Premium quality Anti skid ceramic tiles.
WALLS	Premium quality ceramic tiles cladded upto ceiling hight.
FITTINGS	Designer Toilet/s with Branded W.C. kohler / Grohe or equivalentand intelligent seat Dr. Weisner/Toto/kohler or Equivalent, Washbasin (kohler / Grohe or Equivalent) C.P. fittings (kohler / Grohe/roca or equivalent) and shower panel.
INTERNAL DOOR	Flush Shutter
HARDWARE	All Doors and windows with metal fittings

---

ELECTRICAL	Concealed Motion sensor enabled LED Lights, Copper wiring and PVC Concealed conduit, Provision for adequate light and power points with modular switches and protective M.C.B's.
------------	--

---

WATER SUPPLY	Underground and Overhead water tanks with pumps and 24 hours water supply.
--------------	--

## **TOILET COMMON BEDROOM**

FLOOR	Premium quality Anti skid ceramic tiles.
-------	--

---

WALLS	Premium quality ceramic tiles cladded upto ceiling hight.
-------	---

---

FITTINGS	Designer Toilet/s with Branded W.C. kohler / Grohe or equivalent and intelligent seat Dr. Weisner/Toto/ kohler or Equivalent, Washbasin (kohler / Grohe or Equivalent) C.P. fittings (kohler / Grohe/roca or equivalent).
----------	---

---

INTERNAL DOOR	Flush Shutter
---------------	---------------

---

HARDWARE	All Doors and windows with metal fittings
----------	---

---

ELECTRICAL	Concealed Motion sensor enabled LED Lights, Copper wiring and PVC Concealed conduit, Provision for adequate light and power points with modular switches and protective M.C.B's.
------------	--

---

WATER SUPPLY	Underground and Overhead water tanks with pumps and 24 hours water supply.
--------------	--

## **TOILET BEDROOM**

FLOOR	Premium quality Anti skid ceramic tiles.
-------	--

---

WALLS	Premium quality ceramic tiles cladded upto ceiling hight.
-------	---

---

FITTINGS	Designer Toilet/s with Branded W.C. kohler / Grohe or equivalent, Washbasin (kohler / Grohe or Equivalent) C.P. fittings (kohler / Grohe/roca or equivalent).
----------	---

INTERNAL DOOR	Flush Shutter
HARDWARE	All Doors and windows with metal fittings
ELECTRICAL	Concealed Motion sensor enabled LED Lights, Copper wiring and PVC Concealed conduit, Provision for adequate light and power points with modular switches and protective M.C.B's.
WATER SUPPLY	Underground and Overhead water tanks with pumps and 24 hours water supply.
<b>BALCONIES</b>	
FLOOR	Ceramic Tiles
WALLS	Oil Bound Distemper
ELECTRICAL	Copper wiring and PVC Concealed conduit, Provision for adequate light and power points
<b>LIFT</b>	
FLOOR	PVC Flooring
<b>LOBBIES/CORRIDOR</b>	
FLOOR	Verified Tiles
ELECTRICAL	Copper wiring and PVC Concealed conduit
<b>EXTERIOR FINISH</b>	
WALLS	Texture Paint



**CONTENT**

1. ENTRY/EXIT
2. ENTRANCE PLAZA
3. 7.5 M WIDE ROAD
4. BASEMENT ENTRY
5. BASEMENT EXIT
6. SECURITY ROOM
7. INTERNAL PATHWAY
8. BUILDING ENTRY
9. RESIDENTIAL BLOCK
10. YOGA SPACE
11. CLUB
12. PARKING SPACE
13. SWIMMING POOL
14. AMPHITHEATER
15. CHILDREN'S PLAY AREA
16. WATER BODY
17. LAWN
18. PALM COURT
19. TENNIS COURT
20. BADMINTON COURT
21. JOGGING TRACK
22. COMMERCIAL PLAZA
23. SERVICE BLOCK

PHASE - 2

COMMERCIAL

PHASE - 1

PHASE - 3

Future Iconic Tower

COMMERCIAL



# A Note on the Architects of Tomorrow

Aiming at revolutionizing the real estate sector through uncompromised work ethics and unparalleled deliverance, T&T group prides itself on its innovative real estate developers, working hard on the company's motto of 'built on values,' incorporating into every project the essential elements of innovation, commitment, quality, transparency, consistency and integrity.

Values are Stronger than Bricks & Mortar.



PROJECT T







## Be At The Centre

Located in one of Delhi/NCR's most prominent locations - Siddharth Vihar, Project T is built to offer the convenience of commuting unlike any. Siddharth Vihar is a developing zone near Indirapuram – a vibrant hub full of life.

The lavish green landscapes add to the serenity of the place and make it a perfect dream home location. Metro stations, highways, and airports are all present in the vicinity for easy accessibility and help in cutting down on travel time.

Besides unmatched connectivity, the surrounding area also offers a respite from the city's concrete jungle with a vast area of greenery.



# Opulent Comfort

FOR THE CHOSEN 52



## Valet Parking

In the grandeur of Project T you reside and so you deserve a 'valet de chambre'.



## House Service

Keeping your house clean should not have to be restrictive. Project T offers housekeeping services that seamlessly slot into your daily schedule and can be requested at any time you might find convenient.



## Private Chef

With Private Chef Service at Project T, any day can be a celebration. From indulging in palatable delicacies on special occasions to treating your guests to a lavish meal, a great dining experience is only a call away.



## Laundry Service

Keep your wardrobe ever prepared with the in-house laundry and dry-cleaning services available at Project T.

Come and be a part of a luxurious lifestyle, getting access to amenities that exude magnificence. Enjoy your privacy while experiencing impressive services that cater to all your requirements.



### **Gardening Service**

Because plants need extra care too!  
With a gardener at your disposal, we ensure that your private garden remains lush always.



### **Babysitting Service**

For parents with an engaged lifestyle, Project T will also have an on-call babysitter available at any hour.



### **Pet Care Service**

At Project T, tending to the needs of your loving pets is never a hassle for you. Our exceptional pet care service keeps your four-legged friends well-groomed and even cares for them in your absence.



### **Concierge Desk Service**

Our concierge staff will be present to take requests from you at all times – from getting reservations done to running errands and more.

# Exclusive Amenities



## Daily Needs Kiosk

At Project T, your wish is our command. With multiple in-house grocery kiosks, you never need to step out for anything.



## Indoor Swimming Pool

Dive in to rejuvenate and relax any time you like in what feels just like your private oasis.



## Double-height Entrance Lobby

The entrance at Project T embraces you with a sense of grandeur whenever you step in.



## Plush Washrooms

With high-end sanitary fittings and opulent indoors, every bathroom at Project T is tastefully designed to be more than just a washroom for you to rinse away your daily stress and wind down in its aesthetic setting.

Reside in a space that is the epitome of richness and comfort. With plush surroundings and modern technology around you, experience splendour like never before.



### **Indoor Club House**

For all your recreational needs, the clubhouse offers amenities that elevate your lifestyle.



### **Switchless Electric Panels**

Instead of a conventional switchboard, Project T brings you touch screen panels to operate electric switches with utmost convenience. .



### **Twin Kitchen**

Every kitchen at Project T comes with a layout that splits the full kitchen into two sections for different and specific use: Wet and Dry.



### **Fine Dining Restaurant**

Dine-out in the lavish restaurant that has an impeccable hospitality and a relaxing ambience.

# The Defining Features

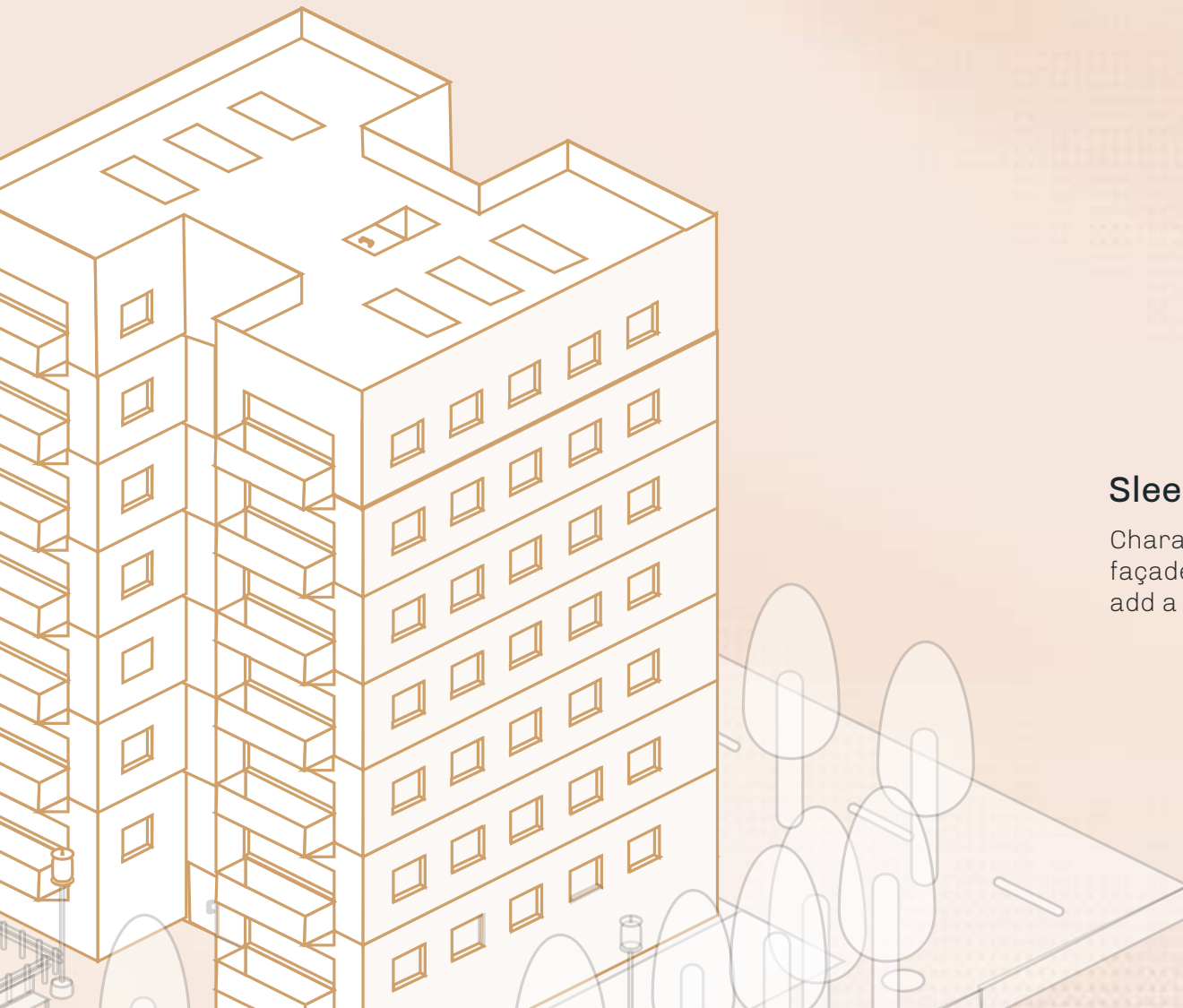
Experience the unmatched grandeur of exclusive luxury. Enter an arena where you are welcomed with lavish entrances and lush surroundings to luxuriate in the privilege of privacy that is hard to come by.





## Only 2 Residences Per Floor

Keeping your privacy exclusive with just two apartments on a single floor gives you your space unlike anywhere else.

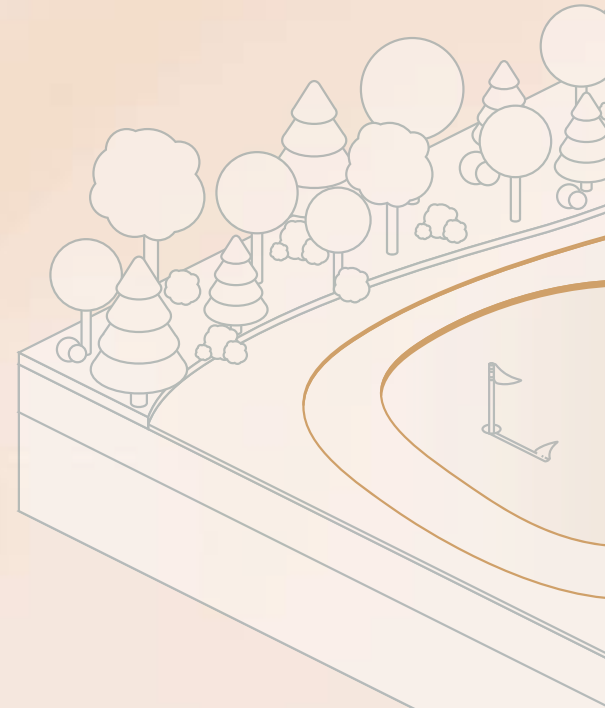


## Sleek Outer Facade

Characterized by futuristic design, the outer façade of Project T is made entirely of glass to add a touch of luxury.

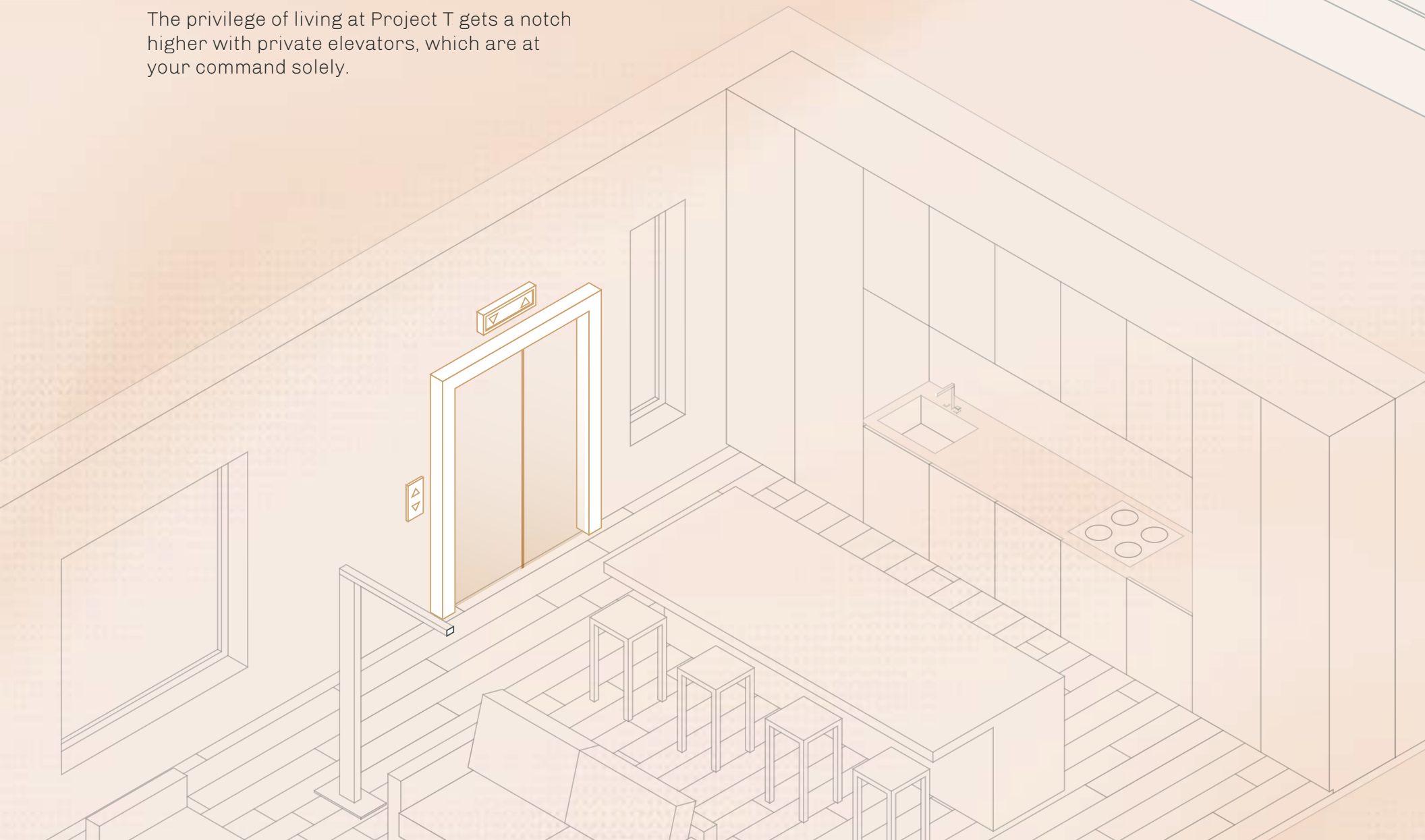
## Panoramic Golf Course View

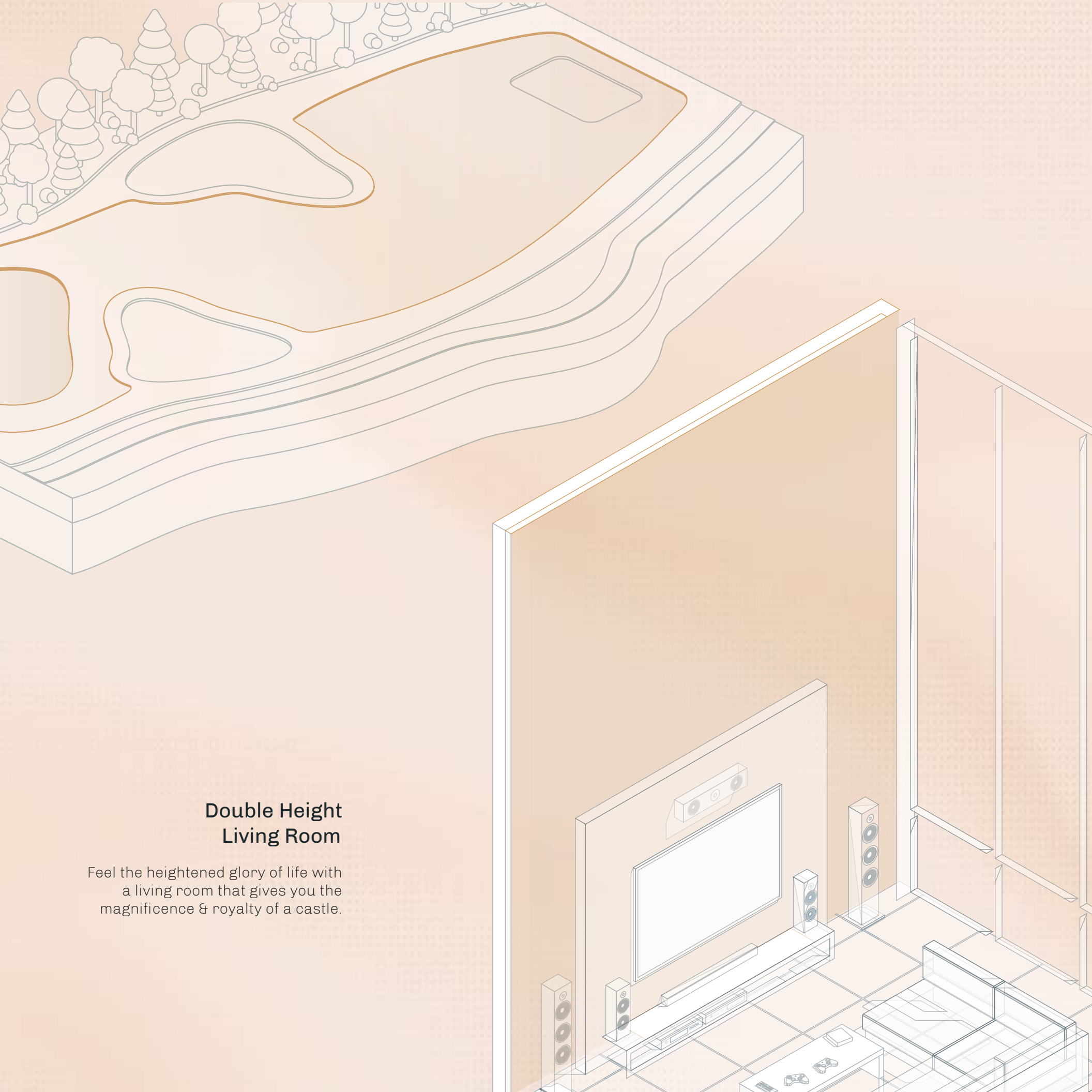
Get a panoramic view of the adjoining golf course from your balcony without any building obstruction. It is your own natural paradise when it comes to Project T.



## Personal Elevator

The privilege of living at Project T gets a notch higher with private elevators, which are at your command solely.





## Double Height Living Room

Feel the heightened glory of life with  
a living room that gives you the  
magnificence & royalty of a castle.

# Mark I

## Floor Plan

5 Bedrooms, 6 Washrooms,  
1 Hall, 1 Kitchen & Balconies



SUPER AREA	3525 SQ.FT. (327.48 SQ.MT.)
USABLE AREA	2670 SQ.FT. (248.05 SQ.MT.)
CARPET AREA	2000.311 SQ.FT. (185.835 SQ.MT.)



# Mark II



## Floor Plan

5 Bedrooms, 6 Washrooms,  
1 Hall, 1 Kitchen & Balconies

SUPER AREA	3525 SQ.FT. (327.48 SQ.MT.)
USABLE AREA	2670 SQ.FT. (248.05 SQ.MT.)
CARPET AREA	2000.311 SQ.FT. (185.835 SQ.MT.)





Corporate Office: The Corenthum, Tower B, 6th Floor, Office No. 46,  
Sector 62, Noida, Uttar Pradesh 201301

Email: [info@tandtgroup.in](mailto:info@tandtgroup.in) | Website: [www.tandtgroup.in](http://www.tandtgroup.in)